

PLEASE RETAIN  
ORIGINAL ORDER

UNCLASSIFIED  
EL/WG MAY 2009

UNARCHIVES  
SERIES S-1062  
BOX 26  
FILE 4  
ACC. 1998/0282

UNAMIR/HAC

R.K VOL 1

- OPERATION ORDERS

AUG 94 - OCT 94

1998/0282

BOX 2-5

G 30130

FOLDER 1

UNAMIR  
Force HQ  
KIGALI

6 Oct 94

OPERATION ORDER No 20

References:

- A. HQUNAMIR OPORD 18 dated 31 Aug 94
- B. HQUNAMIR OPORD 19 dated 4 Sep 94
- C. HQUNAMIR OPDIR No 02-ROE dated 22 Jul 94
- D. Amendment to HQUNAMIR OPDIR No 02 dated 10 Sep 94.
- E. HQUNAMIR 2000-1 FC DIR On Handling of Detainees (to be revised)

Situation

1. General Phase 1 of current operations continues to develop according to plan. The initiation of phase 2 has progressed satisfactorily to date (Ref B) with the introduction of Prefects and RPA forces into Sector 4.

2. Political. The political situation continues to improve. The Broad Based Government of National Unity (BBGNU) is functioning and government ministries are cooperating with UN and NGO agencies. Political representation has been introduced in to the former French Humanitarian Protected Zone without incident. The Government of ZAIRE, on several occasions, has said that Zairian territory will not be used to destabilize RWANDA and ZAIRE will facilitate the return of refugees. Despite these assurances, UNAMIR continues to receive reports of banditry, extortion and intimidation in refugee camps in GOMA by Zairian soldiers, ex-RGF elements and other extremist elements. President Bizimungu has asked UNHCR to do all it can to curb the intimidation and banditry in the camps, however, UNHCR is not mandated to provide security in this manner. The Zairian authorities have also been asked by several UN officials to make efforts in this regard, however, the situation has not improved. Talks have also been held with the President of TANZANIA regarding security within the camps on the Tanzanian side of the border with RWANDA.

3. UNAMIR Forces. Currently, three battalions, one independent company and support contingents are deployed. Advance parties of a Nigerian Company (NICOY), a Zambian Battalion (ZAMBATT) and a Tunisian Battalion (TUNBATT) are awaiting the arrival of equipment and respective main bodies. A Mali Company (MALICOY) recce party is expected to arrive in RWANDA shortly and the deployment of an Indian Battalion (INDBATT) is anticipated. MILOB teams have deployed to all sectors and CIVPOL deployment is progressing. Existing and planned troop deployments are shown at Annexes A and B.

4. RPA capability. Approximately five brigades. Many soldiers are newly recruited. To date battalion sized forces have been deployed to Sectors 4A, 4B and 4C.

5. Threat. There are reports of approximately 20,000 former RGF troops in camps in ZAIRE. The troops are based around the towns of GOMA and BUKAVU. About two thirds of the troops are believed to have been recruited during the war and are poorly trained, however, there are unconfirmed reports that these troops are receiving training from the Zairian army. The RGF are rapidly becoming organized at the moment and it is assessed that they have the capability to mount small scale insurgent operations. The likelihood of these operations occurring will grow. Their aim at the moment is most likely to be the destabilisation of the area to deter refugees from returning to RWANDA.

6. Humanitarian. With the cessation of hostilities UNREO representation has greatly increased within the country. As well, many NGO organizations have resumed operations. UNREO will continue to coordinate the strategy for humanitarian relief on behalf of the SRSG and provide direction to UN and NGO organizations. UNAMIR will assist UNREO in this pursuit by providing information on humanitarian affairs within sectors, providing resources when available and by creating secure conditions for humanitarian agencies to conduct their operations. Humanitarian activities for the present are concerned principally with the following:

- a. Provide humanitarian assistance to displaced persons inside and outside Rwanda.
- b. Assisting displaced persons in returning home.
- c. Monitoring human rights violations within the country.

#### Mission

7. UNAMIR is to provide security, and to assist and coordinate the humanitarian support of participating countries/organizations to facilitate a rapid and effective end to the crisis in RWANDA.

#### Execution

##### 8. General Outline

- a. Force operations will concentrate on creating secure conditions to facilitate the delivery of humanitarian assistance and the return of refugees and displaced persons to their homes.

(2) Phase 2. Phase 2 will require the rationalization of troop deployment throughout RWANDA. The withdrawal of a significant number of troops will occur during this phase. In the short term, UNAMIR assistance will be provided by a smaller number of troops and MILOBS. In the long term, withdrawal of all UN elements will be effected.

9. Groupings and Tasks. Operation Passage (Canada) and Operation Gabriel (UK) have deployed in coordination with UNAMIR. Operation Support Hope (US) ceased on 28 Sep 94.

10. MILOB GP

a. Grouping.

(1) OPCON. MALAWICOY in Sector 3A and MALICOY in Sector 3B.

(2) In loc. Support elements as required.

b. Tasks.

(1) Phase 1.

(a) Continue deployment of UNMO to all Sectors;

(b) Identify safe haven areas for displaced persons;

(c) Participate in security operations with local authorities such as Communal Police and Gendarmerie (CIVPOL only);

(d) Monitor border crossing by refugees and armed individuals/groups in own area of responsibility;

(e) Provide security in refugee/displaced persons' camps in conjunction with co-located troops;

(f) Monitor insurgent activity;

(g) Provide escorts as required;

(h) Identify and list all the refugee/displaced persons' camps in the area of responsibility;

(i) Assist the NGOs in distributing food, water and medical support;

(j) Carry out recce and identify the food and water distribution points at commune level;

(k) Assist in the organization and provision of available resources to move the refugees/displaced persons;

(l) Be prepared to coordinate transport for the repatriation of refugees and displaced persons;

(m) Motivate the displaced persons to return to their homes;

(n) Assist in the maintenance of liaison with the RPA;

(o) Assist relief committees in the preparation of lists of the affected families;

(p) Assist the affected people in returning to and settling down at their respective homes; and

(q) Assist in the coordination of all activities of the NGOs.

(2) Phase 2. Assume control of sector operations as troop redeployment/withdrawal is effected. Withdraw on order.

11. CIVPOL.

a. Grouping. No change.

b. Tasks.

(1) Phase 1.

(a) Continue deployment to all sectors;

(b) Assist in the establishment of Communal Police Training Centres within the Prefectures(Sector 4);

(c) Supervise the screening of Communal Police and issuance of credentials;

(d) Initiate an abbreviated training programme;

(e) Assist to plan for disarming and facilitating integration of ex-RGF Gendarmes in RWANDA;

(f) Assist the Prefects in law and order maintenance;

(g) Monitor Police and Gendarme security situation;

(h) Investigate any cases of violations in conjunction with the local authorities;

(i) Monitor the process of the return of RWANDAN refugees/displaced persons and their resettlement;

(j) Conduct an intensive training programme to induct the Communal Police and serve as an advisor when necessary;

(k) Continue the training of new Gendarmes; and

(l) Assist MILOBs and ground troops in police matters.

(2) Phase 2. Conduct operations in coordination with MILOBs as troop redeployment/withdrawal is effected. Withdraw on order.

12. NICOY (Mechanized).

a. Grouping.

(1) As per UN Table of Organization and Equipment (Strength of 358 personnel). OPCON MILOB and CIVPOL.

b. Tasks. Tasks are as follows:

(1) Phase 1.

(a) Occupy and conduct operations in Sector 1;

(b) Provide armed escorts as required;

(c) Establish safe haven areas for displaced persons and secure these camps by static guards /mobile patrolling;

(d) Conduct protective operations:

(1) Road block;

(2) Check point (static and random);

(3) Vital point protection;

(4) Observation posts;

(5) Cordon and search; and

(6) Patrol, etc.

(e) Monitor border crossing by refugees and armed individual/groups in own area of responsibility;

- (f) Control the main axis in Sector 1;
- (g) Provide security in large towns;
- (h) Protect airfield/strips(s) within boundary;
- (i) Deny insurgent activity;
- (j) Detain /arrest any suspected individual/groups and hand them over in accordance with Reference E;
- (k) Guard UN installations in own area;
- (l) Identify and list all the refugee/displaced persons' camp in the area of responsibility;
- (m) Assist the NGOs in distributing food, water and medical support;
- (n) Assist the local authority in maintaining law and order in camps;
- (o) Carry out recce and identify the food and water distribution points at commune level;
- (p) Be prepared to provide transport for the repatriation of refugees and displaced persons;
- (q) Motivate the displaced persons to return to their homes;
- (r) Coordinate with the RPA regarding the security of the people;
- (s) Assist relief committees in preparation of list of the affected families;
- (t) Assist the affected people in returning to and settling down at their respective homes;
- (u) Assist in the distribution of house building material and farming tools;
- (v) Assist in the coordination of all activities of the NGOs; and
- (w) On Order, handover all activities to the Government and NGOs progressively as the situation becomes normal.

(2) Phase 2. Withdraw on order.



13. GHANBATT (Mechanized).

a. Grouping.

(1) As per UN Table of Organization and Equipment (strength of 820 personnel). OPCON MILOB and CIVPOL.

b. Tasks.

(1) Phase 1.

(a) Conduct relief in place with ZAMBATT in Sector 4A;

(b) Occupy and conduct operations in Sectors 2 and 6;

(c) Be prepared to conduct relief in place with INDBATT in Sector 6;

(d) Redeploy within Sector 2 once relieved in Sector 6;

(e) Provide armed escorts as required;

(f) Establish safe haven areas for displaced persons and secure these camps by static guards /mobile patrolling;

(g) Conduct protective operations:

(1) Road block;

(2) Check point (static and random);

(3) Vital point protection;

(4) Observation posts;

(5) Cordon and search; and

(6) Patrol, etc.

(h) Be prepared to react security forces in accordance with UNAMIR instructions on security of UN and NGO installations in KIGALI CITY until relieved by INDBATT in Sector 6 (TBI);

(i) Control the main axis within Sector;

(j) Provide security in large towns;

(k) Protect airfield/strips(s) within boundary;

(l) Deny insurgent activity;

8/27

(m) Detain /arrest any suspected individual/groups and hand them over in accordance with Reference E;

(n) Guard UN installations within boundary;

(o) Monitor border crossing by refugees and armed individual/groups in own area of responsibility;

(p) Identify and list all the refugee/displaced persons' camp in the area of responsibility;

(q) Assist the NGOs in distributing food, water and medical support;

(r) Carry out recce and identify the food and water distribution points at commune level;

(s) Be prepared to provide transport for the repatriation of refugees and displaced persons;

(t) Motivate the displaced persons to return to their homes;

(u) Coordinate with the RPA regarding the security of the people;

(v) Assist relief committees in preparation of list of the affected families;

(w) Assist the affected people in returning to and settling down at their respective homes;

(x) Assist in the distribution of house building material and farming tools;

(y) Assist in the coordination of all activities of the NGOs; and

(z) On Order, handover all activities to the Government and NGOs progressively as the situation becomes normal.

(2) Phase 2. Withdraw on order.

14. MALAWICOY (Motorized)

- a. Grouping. As per UN Table of Organization and Equipment (strength 167 personnel). Company is allocated under OPCON of MILOB Sector Comd.

b. Tasks

(1) Phase I

- (a) Occupy and conduct operations in Sectors 3A and 3B;
- (b) Conduct relief in place with MALICOY in Sector 3B on order;
- (c) Redeploy to Sector 3A on completion of RIP;
- (d) Provide armed escorts as required;
- (e) Establish safe haven areas for displaced persons and secure these camps by static guards /mobile patrolling;
- (f) Conduct protective operations:
  - (1) Road block;
  - (2) Check point (static and random);
  - (3) Vital point protection;
  - (4) Observation posts;
  - (5) Cordon and search; and
  - (6) Patrol, etc.
- (g) Monitor border crossing by refugees and armed individual/groups in own area of responsibility;
- (h) Control the main axis in Sectors 3A and 3B until RIP complete, then control main axis in Sector 3A;
- (i) Provide security in large towns;
- (j) Protect airfield/ strips(s) within boundary;
- (k) Deny insurgent activities;
- (l) Detain /arrest any suspected individual/groups and hand them over in accordance with Reference E;
- (m) Guard UN installations in own area;
- (n) Identify and list all the refugee/displaced persons' camp in the area of responsibility;

- (o) Assist the NGOs in the movement and distribution of food, water and medical support;
- (p) Carry out recce and identify the food and water distribution points at commune level;
- (q) Be prepared to provide transport for the repatriation of refugees and displaced persons;
- (r) Motivate the displaced persons to return to their homes;
- (s) Coordinate with the RPA regarding the security of the people;
- (t) Assist relief committees in preparation of list of the affected families;
- (u) Assist the affected people in settling down to their respective homes;
- (v) Assist in the distribution of house building material and farming tools;
- (w) Assist in the coordination of all activities of the NGOs; and
- (x) On order, handover all activities to the Government and NGOs progressively as the situation becomes normal.

(2) Phase 2. Withdraw on order.

15. MALICOY (Motorized)

a. Grouping. As per UN Table of Organization and Equipment (strength 150 personnel). Company is allocated under OPCON of MILOB Sector Comd.

b. Tasks

(1) Phase I

- (a) Conduct relief in place with MALAWICOY in Sector 3B;
- (b) On order, redeploy to conform with amended boundary at Annex B;
- (c) Provide armed escorts as required;
- (d) Establish safe haven areas for displaced persons and secure these camps by static guards /mobile patrolling;

- (e) Conduct protective operations:
  - (1) Road block;
  - (2) Check point (static and random);
  - (3) Vital point protection;
  - (4) Observation posts;
  - (5) Cordon and search; and
  - (6) Patrol, etc.
- (f) Control the main axis in Sector 3B;
- (g) Provide security in large towns;
- (h) Protect airfield/ strips(s) within boundary;
- (i) Deny insurgent activities;
- (j) Detain /arrest any suspected individual/ groups and hand them over in accordance with Reference E;
- (k) Guard UN installations in own area;
- (l) Identify and list all the refugee/displaced persons' camp in the area of responsibility;
- (m) Assist the NGOs in the movement and distribution of food, water and medical support;
- (n) Carry out recce and identify the food and water distribution points at commune level;
- (o) Be prepared to provide transport for the repatriation of refugees and displaced persons;
- (p) Motivate the displaced persons to return to their homes;
- (q) Coordinate with the RPA regarding the safety of the people;
- (r) Assist relief committees in preparation of list of the affected families;
- (s) Assist the affected people in returning to and settling down at their respective homes;
- (t) Assist in the distribution of house building material and farming tools;

(u) Assist in the coordination of all activities of the NGOs; and

(v) On order, handover all activities to the Government and NGOs progressively as the situation becomes normal.

(2) Phase 2. Withdraw on order.

16. ZAMBATT (Motorized)

a. Grouping. As per UN Table of Organization and Equipment (approx strength 800 personnel.) OPCON MILOB and CIVPOL.

b. Tasks. Tasks are as follows:

(1) Phase 1

(a) Conduct relief in place with GHANBATT in Sector 4A and the CHAD company (FRAFBATT) in Sector 4B;

(b) Provide armed escorts as required;

(c) Establish safe haven areas for displaced persons and secure these camps by static guards /mobile patrolling;

(d) Conduct protective operations:

(1) Road block;

(2) Check point (static and random);

(3) Vital point protection;

(4) Observation posts;

(5) Cordon and search; and

(6) Patrol, etc.

(e) Monitor border crossing by refugees and armed individual/groups in own area of responsibility;

(f) Control the main axis in Sector 4A;

(g) Provide security in large towns;

(h) Deny insurgent activities;

(i) Detain /arrest any suspected individual/groups and hand them over in accordance with Reference E;

- (j) Guard UN installations in own area;
- (k) Identify and list all the refugee/displaced persons' camp in the area of responsibility;
- (l) Assist the NGOs in the movement and distribution of food, water and medical support;
- (m) Carry out recce and identify the food and water distribution points at commune level;
- (n) Be prepared to provide transport for the repatriation of refugees and displaced persons;
- (o) Motivate the displaced persons to return to their homes;
- (p) Coordinate with the RPA regarding the security of the people;
- (q) Assist relief committees in preparation of list of the affected families;
- (r) Assist the affected people in returning to and settling down at their respective homes;
- (s) Assist in distributing of the house building material and farming tools;
- (t) Assist in the coordination of all the activities of the NGOs; and
- (u) On order, handover all activities to the Government and NGOs progressively as the situation becomes normal.

(2) Phase 2. Withdraw on order.

17. FRAFBATT

- a. Grouping. As per UN Table of Organization and Equipment (strength 496 personnel.) OPCON MILOB and CIVPOL
- b. Tasks.
  - (1) Phase 1.
    - (a) Conduct operations in Sector 4B.
    - (b) CHAD company to conduct relief in place with ZAMBATT in southern area of Sector 4B.
    - (c) On order, redeploy to conform with the amended 4B boundary at Annex B;

- (d) Provide armed escorts as required;
- (e) Establish safe haven areas for displaced persons and secure these camps by static guards /mobile patrolling;
- (f) Conduct protective operations:
  - (1) Road block;
  - (2) Check point (static and random);
  - (3) Vital point protection;
  - (4) Observation posts;
  - (5) Cordon and search; and
  - (6) Patrol, etc.
- (g) Monitor border crossing by refugees and armed individual/groups in own area of responsibility;
- (h) Control the main axis in Sector 4B;
- (i) Provide security in large towns;
- (j) Protect airfield/ strips(s) within boundary;
- (k) Deny insurgent activities;
- (l) Detain /arrest any suspected individual/groups and hand them over in accordance with Reference E;
- (m) Guard UN installations in own area;
- (n) Identify and list all the refugee/displaced persons' camp in the area of responsibility;
- (o) Assist the NGOs in distributing food, water and medical support;
- (p) Carry out recce and identify the food and water distribution points at commune level;
- (q) Be prepared to provide transport for the repatriation of refugees and displaced persons;
- (r) Motivate the displaced persons to return to their homes;
- (s) Coordinate with the RPA regarding the safety of the people;



- (t) Assist relief committees in preparation of list of the affected families;
- (u) Assist the affected people in returning to and settling down at their respective homes;
- (v) Assist in the distribution of house building material and farming tools;
- (w) Assist in the coordination of all activities of the NGOs; and
- (x) On order, handover all activities to the Government and NGOs progressively as the situation becomes normal.

(2) Phase 2. Withdraw on order.

18. ETHIOBATT (Mechanized)

a. Grouping. As per UN Table of Organisation and Equipment (strength 800 personnel). OPCON MILOB and CIVPOL.

b. Tasks.

(1) Phase 1.

- (a) Conduct operations in Sector 4C;
- (b) Provide armed escorts as required;
- (c) Establish safe haven areas for displaced persons and secure these camps by static guards /mobile patrolling;
- (d) Conduct protective operations:
  - (1) Road block;
  - (2) Check point (static and random);
  - (3) Vital point protection;
  - (4) Observation posts;
  - (5) Cordon and search; and
  - (6) Patrol, etc.
- (e) Monitor border crossing by refugees and armed individual/groups in own area of responsibility;
- (f) Control the main axis in Sector 4C;

- (g) Provide security in large towns;
- (h) Protect airfield/ strips(s) within boundary;
- (i) Deny insurgent activities;
- (j) Detain /arrest any suspected individual/ groups and hand them over in accordance with Reference E;
- (k) Guard UN installations in own area;
- (l) Identify and list all the refugee/displaced persons' camp in the area of responsibility;
- (m) Assist the NGOs in distributing food, water and medical support;
- (n) Carry out recce and identify the food and water distribution points at commune level;
- (o) Be prepared to provide transport for the repatriation of refugees and displaced persons;
- (p) Motivate the displaced persons to return to their homes;
- (q) Coordinate with the RPA regarding the security of the people;
- (r) Assist relief committees in preparation of list of the affected families;
- (s) Assist the affected people in returning to and settling down at their respective homes;
- (t) Assist in the distribution of house building material and farming tools;
- (u) Assist in the coordination of all activities of the NGOs; and
- (v) On order, handover all activities to the Government and NGOs progressively as the situation becomes normal.

(2) Phase 2. Withdraw on order.

19. TUNBATT (Mechanized)

- a. Grouping. As per UN Table of Organization and Equipment (approx strength 800 personnel). OPCON MILOB and CIVPOL.

b. Tasks.

(1) Phase 1.

- (a) Occupy and conduct operations in Sector 5;
- (b) On order, redeploy to conform with amended Sector 5 boundary at Annex B;
- (c) Provide armed escorts as required;
- (d) Establish safe haven areas for displaced persons and secure these camps by static guards /mobile patrolling;
- (e) Conduct protective operations:
  - (1) Road block;
  - (2) Check point (static and random);
  - (3) Vital point protection;
  - (4) Observation posts;
  - (5) Cordon and search; and
  - (6) Patrol, etc.
- (f) Monitor border crossing by refugees and armed individual/groups in own area of responsibility;
- (g) Control the main axis in Sector 5;
- (h) Provide security in large towns;
- (i) Protect airfield/ strips(s) within boundary;
- (j) Deny insurgent activities;
- (k) Detain /arrest any suspected individual/groups and hand them over in accordance with Reference E;
- (l) Guard UN installations in own area;
- (m) Identify and list all the refugee/displaced persons' camp in the area of responsibility;
- (n) Assist the NGOs in distributing food, water and medical support;
- (o) Carry out recce and identify the food and water distribution points at commune level;

- (p) Be prepared to provide transport for the repatriation of refugees and displaced persons;
- (q) Motivate the displaced persons to return to their homes;
- (r) Coordinate with the RPA regarding the security of the people;
- (s) Assist relief committees in preparation of list of the affected families;
- (t) Assist the affected people in returning to and settling down to their respective homes;
- (u) Assist in the distribution of house building material and farming tools;
- (v) Assist in the coordination of all activities of the NGOs; and
- (w) On order, handover all activities to the Government and NGOs progressively as the situation becomes normal.

(2) Phase 2. Withdraw on order.

20. INDBATT

a. Grouping. Two infantry companies, composite engineer company, movement control platoon. (approx strength 800 personnel)

b. Tasks

(1) Phase 1.

- (a) Deploy to and conduct operations in Sector 6;
- (b) Provide armed escorts as required;
- (c) Establish safe haven areas for displaced persons and secure these camps by static guards /mobile patrolling;
- (d) Conduct protective operations:
  - (1) Road block;
  - (2) Check point (static and random);
  - (3) Vital point protection;
  - (4) Observation posts;

- (5) Cordon and search; and
- (6) Patrol, etc.
- (e) Control the main axis in Sector 6;
- (f) Protect airfield/ strips(s) within boundary;
- (g) Deny insurgent activities;
- (h) Detain /arrest any suspected individual/ groups and hand them over in accordance with Reference E;
- (i) Guard UN installations in own area;
- (j) Maintain platoon size ready reaction force;
- (k) Be prepared to deploy security forces in accordance with UNAMIR instructions for security of UN and NGO installations in KIGALI CITY (to be issued);
- (l) Provide engr sp to UNAMIR principally through the maint of routes, repair of bridges and the provision of water pts;
- (m) Provide engr advice to HQ UNAMIR;
- (n) Assist in the restoration of essential svcs and facilities as dir by HQ UNAMIR;
- (o) Be prepared to clear mines, unexploded ordinance and booby traps where appropriate and where resources will allow;
- (p) Assist the NGOs in distributing food, water and medical support;
- (q) Be prepared to provide transport for the repatriation of refugees and displaced persons;
- (r) Motivate the displaced persons to return to their homes;
- (s) Coordinate with the RPA regarding the security of the people;
- (t) Assist relief committees in preparation of list of the affected families;
- (u) Assist the affected people in returning to and settling down at their respective homes;
- (v) Assist in the distribution of house building material and farming tools;

(w) Assist in the coordination of all activities of the NGOs; and

(x) On order, handover all activities to the Government and NGOs progressively as the situation becomes normal.

(2) Phase 2. Withdraw on order.

21. CANADIAN CONTINGENT (FORCE COMM SON)

a. Grouping. Signal squadron, medical platoon, an engr platoon with water purification detachment, a defence and security platoon, air traffic control detachment, a services support squadron and a national support element.

b. Tasks

(1) Provide Force communications throughout the AO.

(2) Establish level two medical facility at Amahoro Stadium.

(3) Provide medical support to refugees/displaced persons.

(4) Encourage refugees to return to their home areas.

(5) Assist NGOs where possible with the distribution of food and water to refugees/displaced persons.

(6) Assist UNAMIR in transporting refugees and displaced persons to their home areas when possible.

(7) Assist UNAMIR in the management of stores and equipment.

(8) Be prepared to augment GHANBATT/INDBATT security force in accordance with UNAMIR instructions on security of UN and NGO installations in Sector 6.

(9) Be prepared to provide one AME team on rotational basis as determined by FMO.

22. AUSTRALIAN CONTINGENT (MEDICAL SUPPORT FORCE)

a. Grouping. Force medical staff and medical support company, level two and three medical facilities and defence and security company.

b. Tasks.

(1) Provide medical support to UNAMIR forces in accordance with the Force Medical Support Plan.

- (2) Maintain a level three medical facility with:
  - (a) initial wound surgical capability;
  - (b) specialist support elements; and
  - (c) at least 35 beds.
- (3) Be prepared to deploy a treatment section of up to two casualty collecting posts (CCP) as required.
- (4) Be prepared to deploy a dental section and preventative medicine section as required.
- (5) Provide a road evacuation service as directed.
- (6) Be prepared to provide up to two AME teams.
- (7) Provide health advice to the FMO.
- (8) Provide medical support to refugees/displaced persons within spare capacity.
- (9) Assist NGOs, where possible, with distribution of food, medical supplies and water to refugees/displaced persons.
- (10) Be prepared to augment GHANBATT/INDBATT security force in accordance with UNAMIR instructions on security of UN and NGO installations in Sector 6.

23. BRITISH CONTINGENT (OP GABRIEL)

- a. Grouping. Engineer squadron, Log Sp squadron, Fd Amb and Maint coy.
- b. Tasks.
  - (1) Provide engr sp to UNAMIR principally through the maint of routes, repair of bridges and the provision of water pts.
  - (2) Provide engr advice to HQ UNAMIR.
  - (3) Assist in the restoration of essential svcs and facilities as dir by HQ UNAMIR.
  - (4) Be prepared to clear mines, unexploded ordnance and booby traps for other UNAMIR contingents where appropriate and where resources will allow.
  - (5) Provide level two and three med spt to refugees/displaced persons as dir by HQ UNAMIR.
  - (6) Be prepare to provide surgical spt to UNAMIR as dir by HQ UNAMIR.

(7) In conjunction with BROWN and ROOT, provide 2nd line repair and recovery sp to UNAMIR contingent vehs and eqpt within deployed capabilities.

(8) Provide maint advice to HQ UNAMIR as required.

(9) Provide bulk fuel sups to UNAMIR as dir by HQ UNAMIR and limited distr of fuel to UNAMIR units within KIGALI.

(10) Assist NGOs with distribution of food, water and other humanitarian sups to refugees/displaced persons.

(11) Assist in tpt of refugees and displaced persons to their home areas where possible.

(12) Provide a focus for tasking of UNAMIR tpt assets and assist with coord of log sp to force as dir.

24. HAC

a. Tasks.

(1) Brief the FC on humanitarian assistance operations in RWANDA.

(2) Provide advice to the Plans Cell of UNAMIR concerning UNAMIR operations in support of humanitarian assistance.

(3) Assist UNREO/UNDP in coordinating the activities of UN and NGO agencies operating in RWANDA.

(4) Conduct humanitarian relief assessment recce throughout sectors as required.

(5) Arrange for the security aspects of humanitarian organizations conducting relief operations in RWANDA in close liaison with UNAMIR Ops Branch.

(6) Collate data from sectors pertaining to humanitarian matters.

(7) Maintain current data on displaced persons and refugees.

(8) Disseminate information concerning human rights abuses to UN human rights rapporteurs.

(9) arrange for the necessary administration for the handover of PWs to the Rwandan authorities to include the presence of ICRC officials.

(10) Effect close liaison with UN and NGO agencies.



(11) Effect close liaison as required with humanitarian representatives of the Rwandan Government.

(12) Assist where possible in locating missing Rwandans and foreign nationals.

25. TAC HQ

a. Grouping. Operations element, logistics element, communications element, liaison element (HAC and RPA) and movement control element (as required).

b. Tasks.

(1) Effect command and control of refugee/displaced persons relocation operations in Sectors 3 and 4.

(2) Be prepared to control and coordinate specified operations on order.

(3) Maintain liaison with RPA HQ in Sector 3.

26. Coordinating Instructions

a. Boundaries - Annex A - troop deployment with effect 5 Oct 94, Annex B - troop deployment with amended Sector 4B (to be effected on order).

b. Humanitarian control measures - Annex C.

c. Routes - Annex D.

d. ROE - Refs C and D.

(1) Weapon Readiness Status - State Green all sectors.

e. Information Collection Requirements. The Force Commander's Primary Information Requirements (PIR) will be distributed weekly or more frequently if required.

f. Timings - Matrix depicting future deployment schedule is shown at Annex F.

ADMINISTRATION AND LOGISTICS

27. See ADMINORD No 19 dated 5 Oct 94.

a. Medical. See ADMINORD No. 19 dated 5 Oct 94.

COMMAND AND SIGNALS

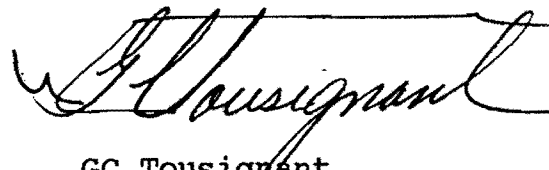
28. Control. See Annex E. MILOB HQ and CIVPOL HQ are to effect liaison, coordination and administrative control through discrete channels. OP PASSAGE (CDN) and OP GABRIEL (UK), although under national control vice UNAMIR are to operate in close cooperation and in support of the UNAMIR humanitarian effort. Sector HQ are to report to the Force HQ indicated below:

- a. All sectors - HQ Main; and
- b. Sectors 3 and 4 - HQ TAC for Humanitarian operations.
- c. Location of Headquarters.
  - (1) UNAMIR Force HQ - KIGALI.
  - (2) UNAMIR Force HQ (TAC) - BUTARE.
  - (3) Sector 1 - BYUMBA.
  - (4) Sector 2 - KIBUNGO.
  - (5) Sector 3A - BUTARE.
  - (6) Sector 3B - GITARAMA.
  - (6) Sector 4A - GIKONGORO.
  - (7) Sector 4B - KIBUYE.
  - (8) Sector 4C - CYANGUGU.
  - (9) Sector 5 - MURARE.
  - (10) Sector 6 - KIGALI CITY.
- d. Frequencies and Callsigns. See CEOI 04/94 Dated 26 Sep 94.

29. Reference A is cancelled.

30. Acknowledge.

cc  
Ph get me copies of the  
attached maps + 7/10

  
GC Tousignant  
MGen  
Force Commander

Annexes:

Annex A. Boundaries  
Annex B. Amended Boundary (Sector 4B)  
Annex C. Humanitarian Control Measures  
Annex D. Routes  
Annex E. Command and Control Network  
Annex F. Future Deployment Schedule

Distribution List:

External:

<u>Action:</u>	<u>Copy No</u>
Canadian Contingent	1
AUSMED	2
BRIT CON	3
MILOB Gp HQ	4-11
NICOY	12
MALICOY	13
GHANBATT	14
MALAWI COY	15
ZAMBATT	16
FRAFBATT	17
ETHIOBATT	18
TUNBATT	19
INDBATT	20
UNCIVPOL	21

Information:

UNDPKO ( Mission Planning Service )	22
-------------------------------------	----

Internal:

<u>Action:</u>	
MA to FC	23
DFC/COS	24
DCOS OPS	25
DCOS SP	26
G1/CMPO	27
G2	28
G3	29
G3 Plans	30
G4	31
G5/CAO	32
G6/FSO	33
MOVCON	34
HAC	35
Camp Comdt	36
FMO	37

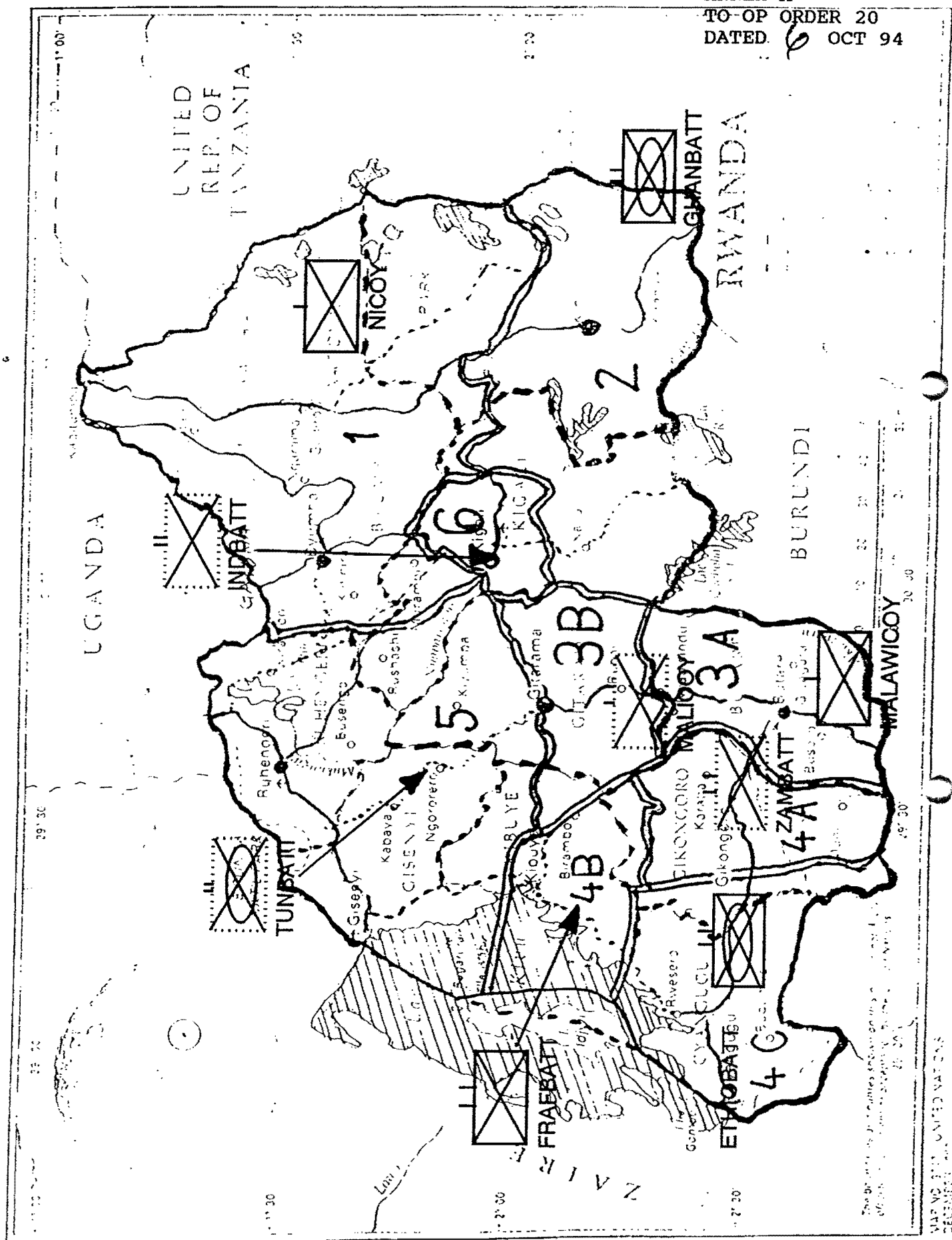
Information:

SRSG's Office	38
CC LOG O	39
File	40
Spare	41-50

ANNEX A

TO-OP ORDER 20

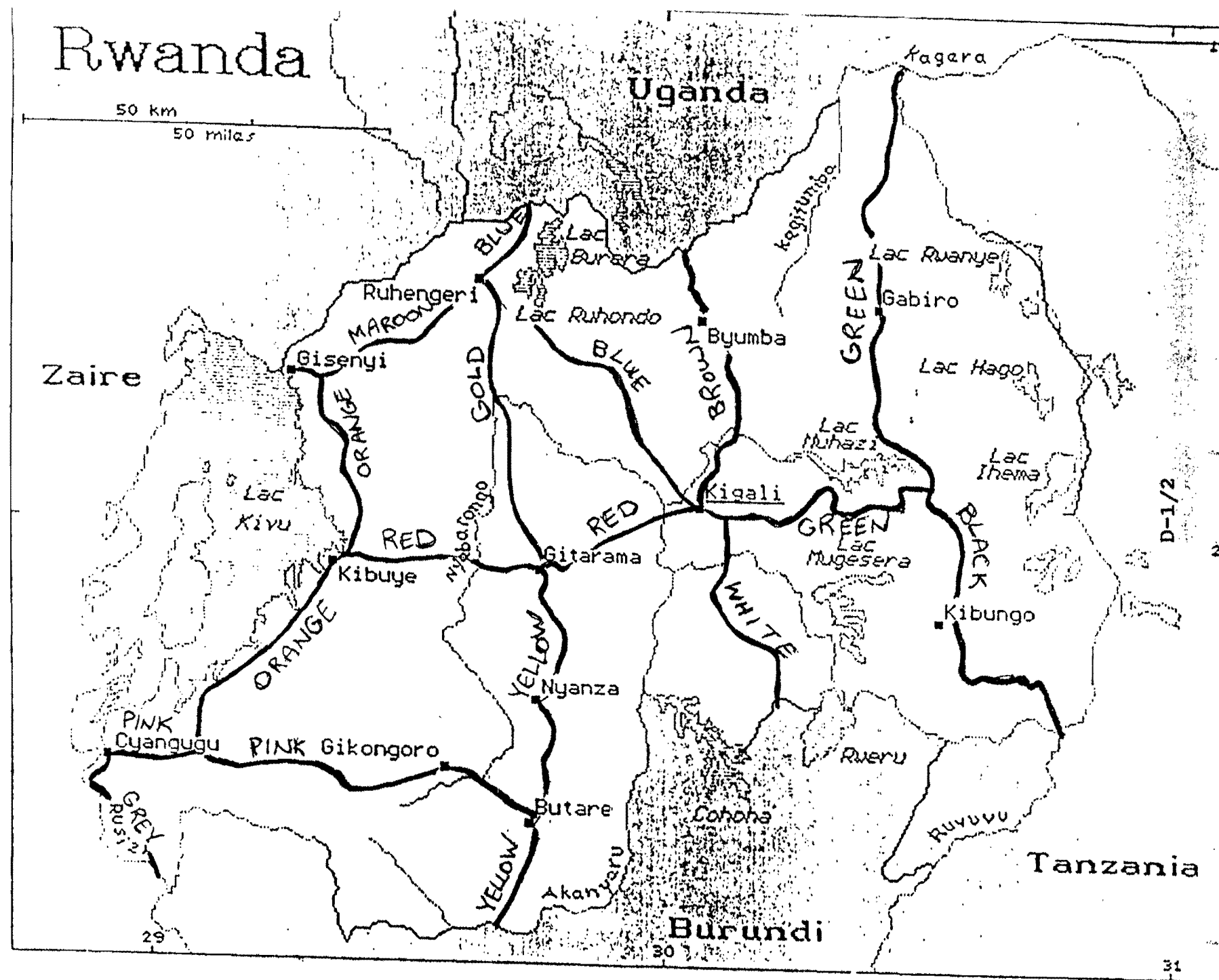
DATED 6 OCT 94



## ANNEX D

ORDER OF

TO CI ORDER 220  
DATED 6 OCT 94

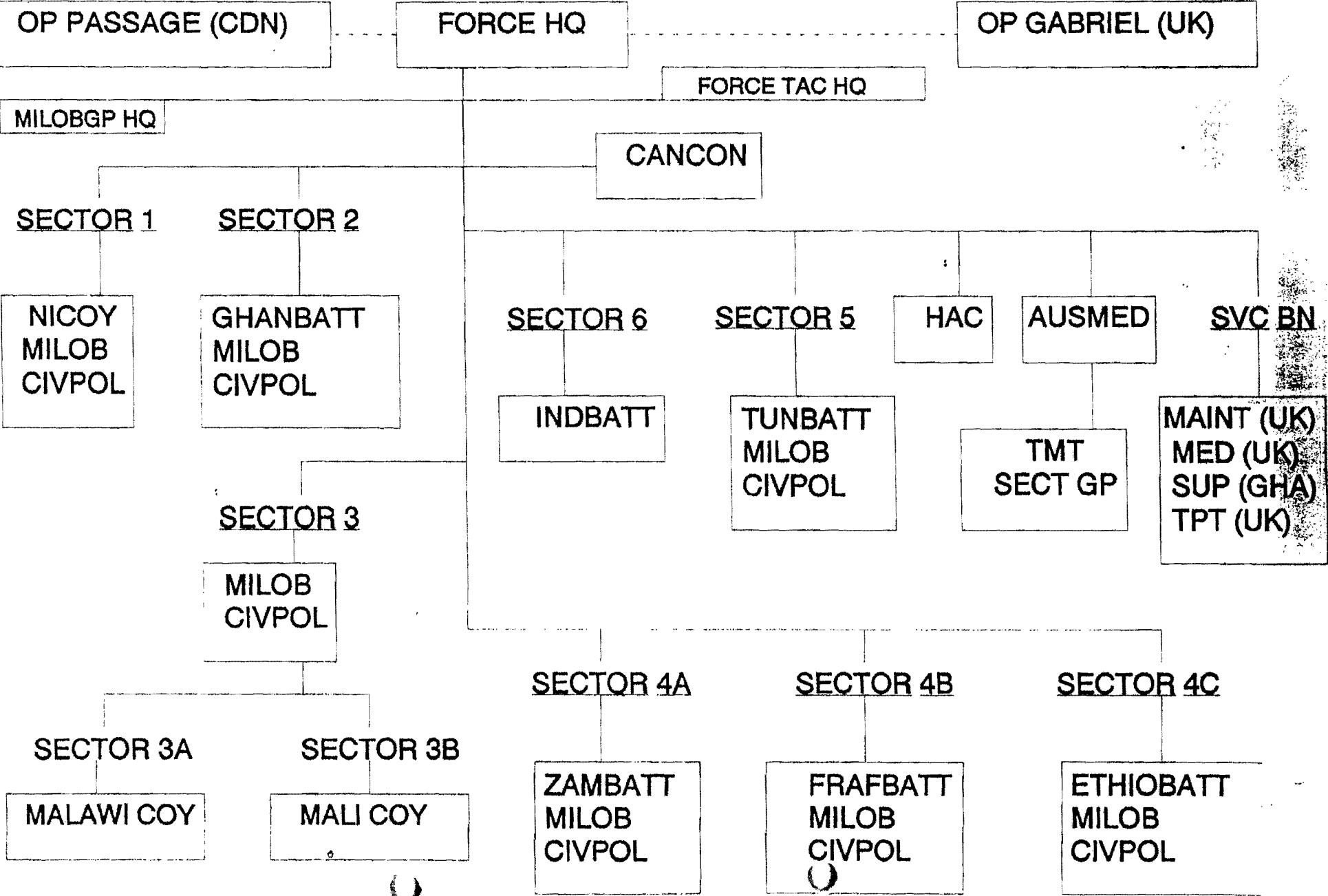


SER	ROUTE	DESCRIPTION
(a)	(b)	(c)
1	BLUE	KIGALI - SHYORONG - TARE - NYARTOVU - RUHENGERI-GISORO
2	MAROON	RUHENGERI - MUKINGO - MUKAMURA - GISENYI
3	ORANGE	JUNCTION POINT-B - MABANZA - KIBUYE - CYESHA - JUNCTION POINT-C
4	PINK	CYANGUGU - NYAOINJANO - GIKONGORO - BUTARE
5	YELLOW	GITARAMA - KIGOMA - BUTARE - BUJUMARE
6	RED	KIGALI - GITARAMA - MABANZA
7	WHITE	KIGALI - BUGESERA - KANZENZE - MUYINGA
8	BROWN	KIGALI - BIVERAMUURA - RUREMBO - BYUMBA - KABALE
9	GREEN	KIGALI - KANOMBE - GIKORO - RWANAGAMA - KAYONZA - MURAMBI - GABIRO - MURENGERO - MATIMBA - KAMPALA
10	BLACK	RWAMAGAMA - KEYONZA - JUNCTION POINT-D (KIBUNGO(SOUTH)) - RUSUMO - BUKUBA
11	GOLD	MUSUBATI - GATUMBE - NYAMUTERA - RUHENGERI
12	GREY	CYANGUGU - JUNCTION POINT-A (BUKAVU(NORTH)) - CYIMBOGO - GISHOMA - BUGARAMA - UVIRA

JUNCTION POINT-A: GRID 753 204  
JUNCTION POINT-B: GRID 956 323  
JUNCTION POINT-C: GRID 241 125  
JUNCTION POINT-D: GRID 619 639

ANNEX E TO  
OP ORDER 20  
DATED 6 OCT 94

UNAMIR COMMAND AND CONTROL





# CONTINGENT DEPLOYMENT PLANNING SCHEDULE

ANNEX F TO

OP ORDER 20

DATED 6 OCT 94

SEPTEMBER

DATE	1	2	3	4	5	6	7	8	9	10	11	12	13	14	15	16	17	18	19	20
INDBATT	R	R	R	R																
MALICOY																				
MALAWICOY										DC										
NICOY	R	A	R	R	R		A	A	A											
TUNBATT	A	A																		
ZAMBATT		A	A	A	A															
DATE	1	2	3	4	5	6	7	8	9	10	11	12	13	14	15	16	17	18	19	20

RECCE - (R)

ADVANCE PARTY - (A)

MAINBODY - (M)

DEPLOYMENT COMPLETED - (DC)

READY TO MOVE - (RTM)

EQUIPMENT - (E)

ANNEX F TO

OP ORDER 20

DATED 6 OCT 94

OCTOBER

21	22	23	24	25	26	27	28	29	30	1	2	3	4	5	6	7	8	9	10	11	12
														R	R	R					
		RT					M	M													
															M	M	E	E	E	M	DC
21	22	23	24	25	26	27	28	29	30	1	2	3	4	5	6	7	8	9	10	11	12

RECCE - (R)

ADVANCE PARTY - (A)

MAINBODY - (M)

DEPLOYMENT COMPLETED - (DC)

READY TO MOVE - (RTM)

EQUIPMENT - (E)

Copy No 25 of 34

3000.15 (Ops)

UNAMIR  
Force HQ  
KIGALI, RWANDA

31 Aug 1994

Distribution List

Subject: OPERATION ORDER NO. 18

References: A. Operation Order No 16 dated 25 Jul 94  
B. Modification No 1 to Op Order No 16 dated 6 Aug 94  
C. Operation Directive No 17 dated 8 Aug 94

SITUATION

1. a. UNAMIR. Changes in the military, political and humanitarian situation caused UNAMIR to alter its working procedure. Under the expanded mandate of the Security Council, UNAMIR has deployed forces and support capabilities in RWANDA with an aim to contribute largely in the military, political and humanitarian fields. Ghana, UK, Australia, Ethiopia, Nigeria, Canada, Tunisia, Zambia, Malawi, Chad, Senegal, Congo, Mauritania, Niger, Guinea-Bissau and USA have contributed forces. Forces of the USA do not come directly under UNAMIR but are in direct support for humanitarian assistance.
- b. Political. The political situation remains calm. The newly formed Broad Based Government of National Unity (BBGNU) of RWANDA has started functioning. USA has reopened its embassy in RWANDA and other countries are also planning to re-establish their embassies in RWANDA. Beside this, a number of high level teams from different countries are visiting RWANDA to engage in talks with the present Government.
- c. Military. The military situation remains calm, yet apprehensive. The relief in place with French Coalition Forces (FCF) in Sector 4 (formerly the HPZ) was completed with effect 211130B Aug 94. MILOB teams have deployed to all sectors. Deployments are shown at Annex A
- d. Humanitarian. The Force continues to coordinate humanitarian activities with other humanitarian aid agencies and the return of displaced people to their homes. WPF and other aid agencies continue to deliver food and other aid items to displaced people. In the South West, fears amongst locals continue after the FCF withdrawal. The following activities continue:

② Staff A  
Orders file  
Jai

(1) Stabilization of the refugees/displaced persons in the present locations by provision of food, water, medical support and basic public health measures with an emphasis in Sector 4. Limited services in Sector 4 had created a situation of despair and a resultant significant movement of people west to BUKAVU. Planning for home area preparation and repatriation of refugees/displaced persons has commenced. KIGALI International Airport is now open for 24/7 operations and essential services in KIGALI are being improved.

(2) KIGALI is the centre of gravity of the humanitarian relief and sustainment effort/programme for RWANDA. From the NODAL POINTS, materials are brought to the Distribution Points under the arrangement of UNAMIR. UNAMIR, along with NGOs and local authorities, distribute food and other items to the affected people. There are a number of distribution points in each affected prefecture. NODAL POINTS have been established in RUHENGARI, BYUMBA, GITARAMA, BUTARE and GIKONGORO. In these NODAL POINTS, trucks, food, assistance supplies (like soap), clean water, medical supplies and facilities have been stockpiled. Personnel, experts, material handling, transport and security are all in evidence in order to ensure that onward distribution, and/or more extensive care/treatment, is provided to the various WAY STATIONS between these nodes and to the outlying areas. The WAY STATIONS have been established every 20 Kms or so along the major corridor of GISENYI-RUHENGARI. This principal corridor leading to KIGALI has been established in order to relieve the pressure on GOMA. A pseudo-quarantine radius from the ZAIRE border is in effect (40 Kms) to screen cholera victims before they move beyond RUHENGARI to KIGALI. NGOs are assisting to establish the WAY STATIONS. Concurrently, transport of seriously ill and other displaced persons from sector 4A and sector 4B through GITARAMA to eastern and western prefectures is being pursued. A second priority is the BURUNDI-BUTARE-GITARAMA-KIGALI corridor. The third priority is the TANZANIA-RUSUMO-KIBANGO-RWAMAGANA-KIGALI corridor. The Humanitarian Affairs Cell (HAC) of UNAMIR, with direct support from the US civilian/humanitarian element, is coordinating all military support in the corridor so that there is no duplication. The last priority is the BYUMBA-KIGALI corridor.

(3) When the flow of refugees returning to their home areas increases, the emphasis will switch from route feeding and support to take-home WAY STATION centres located on the secondary axes. The location of NODAL POINTS and WAY STATIONS is shown at Annex B.

## MISSION

2. UNAMIR is to provide security, and to assist and coordinate the humanitarian support of participating countries/organizations to facilitate a rapid and effective end to the crisis in RWANDA.

## EXECUTION

### 3. General Outline

a. The thrust of the effort remains one of security to create the necessary conditions to bring back the refugees and displaced persons and resettle them in their respective home areas. About one million refugees are presently staying in GOMA and two million refugees are waiting to return home from Sector 4. Confidence building activities among the population in ensuring their security, extensive assistance in carrying out humanitarian tasks by different countries/agencies, monitoring cease-fire, assisting the BBGNU to participate in establishing the relief capability in RWANDA and in re-settling displaced persons/refugees is of paramount importance.

b. A strong, resolute UN presence will be provided in all sectors to ensure adequate security. The emphasis will be placed on patrolling, surveillance, escort duties and protective operations (cordon and search road blocks, etc). High mobility and the flexibility to rapidly concentrate forces must be retained throughout the operation. Protected sites are to be established at locations where Rwandans are in need of security. The operation will be continued in 2 phases:

(1) Phase 1. It is expected that most of the refugees/displaced persons will be well on their way to their home areas by the beginning of phase 1. They have to be supported logistically until the next harvest of crops expected by December/January if the planting is to take place in September/October as RWANDA is an agriculturally based country. Food, clean water, medical facilities, road and bridge reconstruction, home building material, farming tools, etc will have to be provided and/or stockpiled in the NODAL POINTS for onward distribution and/or production. Operations will be conducted to ensure that these activities are free from interference by subversive and criminal interference. Deployment is shown at Annex A.

(2) Phase 2. As conditions in RWANDA stabilize and the BBGNU gains control of the situation, the BBGNU, with NGOs, must be capable of providing sufficient assistance without direct UNAMIR and other nation support. A progressive handover of all activities to the Government and NGOs will be done in accordance with a normalisation process. This phase will be accomplished when the majority of the refugees/displaced persons have returned to their homes and the routine life sequence is re-established. While the provision of security will be maintained, some troop redeployment may be necessary to effect handing over responsibilities of Sector 4 to the Rwandan Government. Withdrawal of Infantry Bns in Sector 4, except for one Motorized Bn (yet to be determined), which will deploy throughout Sector 4, will take place.

4. Groupings and Tasks. Operation Support Hope (US), Operation Passage (Canada), and Operation Gabriel (UK) have deployed in coordination with UNAMIR.

5. MILOB GP

a. Grouping.

- (1) MILOBs and CIVPOL;
- (2) OPCON. Independent company in Sector 1 (when allocated) and MALAWI company in Sector 3.
- (3) In loc. Support elements as required.

b. Tasks.

(1) Phase 1.

- (a) Continue deployment of UNMO to all Sectors.
- (b) Establish safe haven areas for displaced persons.
- (c) Participate in security operations with local authorities such as Communal Police and Gendarmerie (CIVPOL only).
- (d) Monitor border crossing by refugees and armed individual/groups in own area of responsibility.
- (e) Provide security in refugee/displaced persons' camps in conjunction with co-located troops.
- (f) Ensure that RGF troops are not present.

- (g) Provide escorts as required.
- (h) Identify and list all the refugee/displaced persons' camp in the area of responsibility.
- (i) Assist the NGOs and the US Forces in distributing food, water and medical support.
- (j) Carry out recce and identify the food distribution points at commune level.
- (k) Organise all available resources to move the refugees/displaced persons.
- (l) Be prepared to coordinate transport for the repatriation of refugees and displaced persons.
- (m) Motivate the displaced persons to return to their homes.
- (n) Coordinate with the RPA regarding the safety of the people.
- (o) Assist relief committees in preparation of list of the affected families.
- (p) Assist the affected people in settling down to their respective homes.
- (q) Assess the requirement of the affected people for settling down specially in farming sector and forward the same to HAC.
- (r) Assist in distributing of the house building material and farming tools.
- (s) Assist in the coordination of all activities of the NGOs.

(2) Phase 2. Handover all activities to the Government and NGOs progressively as the situation normalizes.

6. GHANBATT (Mechanized).

a. Grouping.

~~(1) As per UN Table of Organization and Equipment~~  
(strength of 820 personnel and 50 APCs). OPCON MILOB and CIVPOL.

b. Tasks. Tasks are as follows:

(1) Phase I.

- (a) Conduct relief in place with ZAMBATT in Sector 4A.
- (b) Occupy and conduct operations in Sector 2.
- (c) Provide armed escorts as required.
- (d) Establish safe haven areas for displaced persons and secure these camps by static guards /mobile patrolling.
- (e) Undertake, control measures (road blocks, cordon and search, etc) in conjunction with local authorities.
- (f) Monitor border crossing by refugees and armed individual/groups in own area of responsibility.
- (g) Control the main axis in Sector 2.
- (h) Provide security in large towns and in refugee/displaced persons' camps.
- (i) Protect KIA Airfield and other airfield/strips(s) in own area.
- (j) Ensure that RGF troops are not present.
- (k) Detain /arrest any suspected individual/groups and hand them over to local authority.
- (l) Guard UN installations in own area.
- (m) Identify and list all the refugee/displaced persons' camp in the area of responsibility.
- (n) Assist the NGOs in distributing food, water and medical support.
- (o) Assist the local authority in maintaining the law and order situation in the camps.
- (p) Carry out recce and establish water points in coordination with the NGOs and local authorities at commune level.
- (q) Carry out recce and identify the food distribution points at commune level.



(r) Organise all available resources to move the refugees/displaced persons.

(s) Be prepared to provide transport for the repatriation of refugees and displaced persons.

(t) Motivate the displaced persons to return to their homes.

(u) Coordinate with the RPA regarding the safety of the people.

(v) Assist relief committees in preparation of list of the affected families.

(w) Assist the affected people in settling down to their respective homes.

(x) Assess the requirement of the affected people for settling down specially in farming sector and forward the same to HAC.

(y) Assist in the distribution of house building material and farming tools.

(z) Assist in the coordination of all activities of the NGOs.

(aa) Be prepared to conduct up to company level reinforcement operations in Sector 1 on order.

(2) Phase 2. Handover all activities to the Government and NGOs progressively as the situation becomes normal.

7. MALAWICOY (Motorized)

a. Grouping. As per UN Table of Organization and Equipment (strength 167 personnel). Company is allocated under OPCON of MILOB Sector Comd.

b. Tasks

(1) Phase I

(a) Occupy and conduct operations in Sector 3.

(b) Provide armed escorts as required.

(c) Establish safe haven areas for displaced persons and secure these camps by static guards /mobile patrolling.

- (d) Undertake, control measures (road blocks, cordon and search, etc) in conjunction with local authorities.
- (e) Monitor border crossing by refugees and armed individual/groups in own area of responsibility.
- (f) Control the main axis in Sector 3.
- (g) Provide security in large towns and in refugee/displaced persons' camps.
- (h) Protect airfield/ strips(s) in own area.
- (i) Ensure that RGF troops are not present.
- (j) Detain /arrest any suspected individual/groups and hand them over to local authority.
- (k) Guard UN installations in own area.
- (l) Identify and list all the refugee/displaced persons' camp in the area of responsibility.
- (m) Assist the NGOs in the movement and distribution of food, water and medical support.
- (n) Assist the local authority in maintaining the law and order situation in the camps.
- (o) Carry out recce and establish water points in coordination with the NGOs and local authorities at commune level.
- (p) Carry out recce and identify the food distribution points at commune level.
- (q) Organise all available resources to move the refugees/displaced persons.
- (r) Be prepared to provide transport for the repatriation of refugees and displaced persons.
- (s) Motivate the displaced persons to return to their homes.
- (t) Coordinate with the RPA regarding the safety of the people.
- (u) Assist relief committees in preparation of list of the affected families.
- (v) Assist the affected people in settling down to their respective homes.

(x) Assess the requirement of the affected people for settling down specially in farming sector and forward the same to HAC.

(y) Assist in the distribution of house building material and farming tools.

(z) Assist in the coordination of all activities of the NGOs.

(2) Phase 2. Handover all activities to the Government and NGOs progressively as the situation becomes normal.

8. ZAMBATT (Motorized)

a. Grouping. As per UN Table of Organization and Equipment (approx strength 800 personnel.)

b. Tasks. Tasks are as follows:

(1) Phase I

(a) Conduct relief in place with GHANBATT in Sector 4A.

(b) Provide armed escorts as required.

(c) Establish safe haven areas for displaced persons and secure these camps by static guards /mobile patrolling.

(d) Participate in security operations with local authorities such as Communal Police and Gendarmerie when in place.

(e) Undertake, control measures (road blocks, cordon and search, etc) in conjunction with local authorities.

(f) Monitor border crossing by refugees and armed individual/groups in own area of responsibility.

(g) Control the main axis in Sector 4A.

(h) Monitor Eastern boundary of Sector 4 in own area of responsibility.

(i) Provide security in large towns and in refugee/displaced persons' camps.

(j) Ensure that RGF troops are not present.

(k) Detain /arrest any suspected individual/groups and hand them over to local authority.

- (l) Guard UN installations in own area.
- (m) Identify and list all the refugee/displaced persons' camp in the area of responsibility.
- (n) Assist the NGOs in the movement and distribution of food, water and medical support.
- (o) Assist the local authority in maintaining the law and order situation in the camps.
- (p) Carry out recce and establish water points in coordination with the NGOs and local authorities at commune level.
- (q) Carry out recce and identify the food distribution points at commune level.
- (r) Organise all available resources to move the refugees/displaced persons.
- (s) Be prepared to provide transport for the repatriation of refugees and displaced persons.
- (t) Motivate the displaced persons to return to their homes.
- (u) Coordinate with the RPA regarding the safety of the people.
- (v) Assist relief committees in preparation of list of the affected families.
- (w) Assist the affected people in settling down to their respective homes.
- (x) Assess the requirement of the affected people for settling down specially in farming sector and forward the same to HAC.
- (y) Assist in distributing of the house building material and farming tools.
- (z) Assist in the coordination all the activities of the NGOs.

(2) Phase 2. Handover all activities to the Government and NGOs progressively as the situation becomes normal.

9. FRAFBATT

a. Grouping. As per UN Table of Organization and Equipment ( approx strength 488 personnel.) OPCON MILOB and CIVPOL

b. Deployment. Will continue to remain in Sector 4B.

c. Tasks.

(1) Phase 1.

(a) Conduct operations in Sector 4B.

(b) Provide armed escorts as required.

(c) Establish safe haven areas for displaced persons and secure these camps by static guards /mobile patrolling.

(d) Undertake, control measures (road blocks, cordon and search, etc) in conjunction with local authorities.

(e) Monitor border crossing by refugees and armed individual/groups in own area of responsibility.

(f) Control the main axis in Sector 4B.

(g) Provide security in large towns and in refugee/displaced persons' camps.

(h) Protect airfield/ strips(s) in own area.

(i) Ensure that RGF troops are not present.

(j) Detain /arrest any suspected individual/groups and hand them over to local authority.

(k) Guard UN installations in own area.

(l) Identify and list all the refugee/displaced persons' camp in the area of responsibility.

(m) Assist the NGOs and the US Forces in distributing food, water and medical support.

(n) Assist the local authority in maintaining the law and order situation in the camps.

(o) Carry out recce and establish water points in coordination with the NGOs and local authorities at commune level.

(p) Carry out recce and identify the food distribution points at commune level.

(q) Organise all available resources to move the refugees/displaced persons.

(r) Be prepared to provide transport for the repatriation of refugees and displaced persons.

(s) Motivate the displaced persons to return to their homes.

(t) Coordinate with the RPA regarding the safety of the people.

(u) Assist relief committees in preparation of list of the affected families.

(v) Assist the affected people in settling down to their respective homes.

(w) Assess the requirement of the affected people for settling down specially in farming sector and forward the same to HAC.

(x) Assist in the distribution of house building material and farming tools.

(y) Assist in the coordination of all activities of the NGOs.

(2) Phase 2. Handover all activities to the Government and NGOs progressively as the situation becomes normal.

10. ETHIOBATT (Mechanized)

a. Grouping. As per UN Table of Organisation and Equipment (strength 778 personnel). OPCON MILOB and CIVPOL.

b. Tasks. Phases are as follows:

(1) Phase 1.

(a) Conduct operations in Sector 4C.

(b) Provide armed escorts as required.

(c) Establish safe haven areas for displaced persons and secure these camps by static guards /mobile patrolling.

(d) Undertake, control measures (road blocks, cordon and search, etc) in conjunction with local authorities.

(e) Monitor border crossing by refugees and armed individual/groups in own area of responsibility.

(f) Control the main axis in Sector 4C.

(g) Provide security in large towns and in refugee/displaced persons' camps.

(h) Protect airfield/ strips(s) in own area.

(i) Ensure that RGF troops are not present in sector.

(j) Detain /arrest any suspected individual/groups and hand them over to local authority (once in place) or in accordance with UNAMIR instructions.

(k) Guard UN installations in own area,

(l) Identify and list all the refugee/displaced persons' camp in the area of responsibility.

(m) Assist the NGOs and the US Forces in distributing food, water and medical support.

(n) Assist the local authority in maintaining the law and order situation in the camps.

(o) Carry out recce and establish water points in coordination with the NGOs and local authorities at commune level.

(p) Carry out recce and identify the food distribution points at commune level.

(q) Organise all available resources to move the refugees/displaced persons.

(r) Be prepared to provide transport for the repatriation of refugees and displaced persons.

(s) Motivate the displaced persons to return to their homes.

(t) Coordinate with the RPA regarding the safety of the people.

(u) Assist relief committees in preparation of list of the affected families.

(w) Assist the affected people in settling down to their respective homes.

(x) Assess the requirement of the affected people for settling down specially in farming sector and forward the same to HAC.

(y) Assist in the distribution of house building material and farming tools.

(z) Assist in the coordination of all activities of the NGOs.

(2) Phase 2. Handover all activities to the Government and NGOs progressively as the situation becomes normal.

11. TUNBATT (Mechanized)

a. Grouping. As per UN Table of Organization and Equipment (max strength 850 personnel). OPCON MILOB and CIVPOL.

b. Tasks. Phases are as follows:

(1) Phase 1.

(a) Deploy to and conduct operations in Sector 5.

(b) Provide armed escorts as required.

(c) Establish safe haven areas for displaced persons and secure these camps by static guards /mobile patrolling.

(d) Conduct exchange of refugees/displaced persons on order from Force HQ Humanitarian Cell.

(e) Participate in security operations with local authorities such as Communal Police and Gendarmerie.

(f) Undertake, control measures (road blocks, cordon and search, etc) in conjunction with local authorities.

(g) Monitor border crossing by refugees and armed individual/groups in own area of responsibility.

(h) Control the main axis in Sector 5.

(i) Provide security in large towns and in refugee/displaced persons' camps.



- (i) Protect airfield/ strips(s) in own area.
- (j) Ensure that RGF troops are not present in sector.
- (k) Detain /arrest any suspected individual/ groups and hand them over to local authority.
- (l) Guard UN installations in own area.
- (m) Identify and list all the refugee/displaced persons' camp in the area of responsibility.
- (n) Assist the NGOs and the US Forces in distributing food, water and medical support.
- (o) Assist the local authority in maintaining the law and order situation in the camps.
- (p) Carry out recce and establish water points in coordination with the NGOs and local authorities at commune level.
- (q) Carry out recce and identify the food distribution points at commune level.
- (r) Organise all available resources to move the refugees/displaced persons.
- (s) Be prepared to provide transport for the repatriation of refugees and displaced persons.
- (t) Motivate the displaced persons to return to their homes.
- (u) Coordinate with the RPA regarding the safety of the people.
- (v) Assist relief committees in preparation of list of the affected families.
- (w) Assist the affected people in settling down to their respective homes.
- (x) Assess the requirement of the affected people for settling down specially in farming sector and forward the same to HAC.
- (y) Assist in the distribution of house building material and farming tools.
- (z) Assist in the coordination of all activities of the NGOs.

(2) Phase 2. Handover all activities to the Government and NGOs progressively as the situation becomes normal.

12. CANADIAN CONTINGENT (FORCE COMM SON)

a. Grouping. Signal Squadron, medical platoon, an engr platoon with water purification detachment, a defence and security platoon, air traffic control detachment, a services support squadron and a national support element.

b. Tasks

- (1) Provide Force communications throughout the AO.
- (2) Establish hospital and medical clinic facilities at deployment sites.
- (3) Provide medical support to refugees/displaced persons.
- (4) Encourage refugees to return to their home areas.
- (5) Assist NGOs where possible with the distribution of food and water to refugees/displaced persons.
- (6) Assist UNAMIR in transporting the refugees to their home areas when possible.
- (7) Assist UNAMIR in the management of stores and equipment.
- (8) Be prepared to augment GHANBATT security force in accordance with UNAMIR instructions for security of UN and NGO installations in KIGALI CITY (TBI).

13. AUSTRALIAN CONTINGENT (MEDICAL SUPPORT FORCE)

a. Grouping. Force medical staff, level three medical facility and defence and security company.

b. Tasks.

- (1) Provide medical support to UNAMIR forces in accordance with the Force Medical Support Plan.
- (2) Maintain a level three medical facility with:
  - (a) surgical capability;
  - (b) specialist support elements; and
  - (c) at least 35 beds.
- (3) Be prepared to deploy a treatment section of up to two casualty clearing points as required.

- (4) Be prepared to deploy a dental section and preventative medicine section as required.
- (5) Provide a road ambulance service as directed.
- (6) Be prepared to provide up to two AME teams.
- (7) Provide health advice to the FMO.
- (8) Provide medical support to refugees/displaced persons within capacity.
- (9) Assist NGOs, where possible, with distribution of food, medical supplies and water to refugees/displaced persons.
- (10) Be prepared to augment GHANBATT security force in accordance with UNAMIR instructions for security of UN and NGO installations in KIGALI CITY.

14. BRITISH CONTINGENT (OP GABRIEL)

a. Grouping. Engineer squadron, Log Sp squadron, Fd Amb and Maint coy.

b. Tasks.

- (1) Provide engr sp to UNAMIR principally through the maint of routes, repair of bridges and the provision of water pts.
- (2) Provide engr advice to HQ UNAMIR.
- (3) Assist in the restoration of essential svcs and facilities as dir by HQ UNAMIR.
- (4) Be prepared to clear mines, unexploded ordinance and booby traps for other UNAMIR contingents where appropriate and where resources will allow.
- (5) Provide med sp to refugees/displaced persons as dir by HQ UNAMIR.
- (6) Provide surgical sp to UNAMIR as dir by HQ UNAMIR.
- (7) In conjunction with BROWN and ROOT, provide 2nd line repair and recovery sp to UNAMIR contingent vehs and eqpt within deployed capabilities.
- (8) Provide maint advice to HQ UNAMIR as required.
- (9) Provide bulk fuel sups to UNAMIR as dir by HQ UNAMIR and limited distr of fuel to UNAMIR units within KIGALI.

(10) Assist NGOs with distribution of food, water and other humanitarian sups to refugees/displaced persons.

(11) Assist in tpt of refugees and displaced persons to their home areas where possible.

(12) Provide a focus for tasking of UNAMIR tpt assets and assist with coord of log sp to force as dir.

15. HAC

a. Coordinate all activities of NGOs and other Humanitarian organizations.

b. Assist US Force in their humanitarian efforts.

c. Arrange reception of the refugees at GISENYI in coordination with Govt authorities and NGOs.

d. Identify the WAY STATIONS in between GISENYI and RUHENGARI and assist Sector 5 and NGOs in establishing the WAY STATIONS.

e. Provide assistance to US Forces and NGOs to stabilize refugees in GOMA and BUKAVU.

f. Attract and motivate refugees/displaced persons to return to their homes.

g. Monitor the movement of refugees from GISENYI to RUHENGARI.

h. Ensure that WAY STATIONS are well equipped with food, water and medical facilities.

i. Coordinate with US Forces and NGOs for lifting refugees from RUHENGARI and GIKONGORO to their homes.

j. Select the DISTRIBUTION POINTS in the Prefecture/Commune in coordination with local authorities and Sector Commanders.

k. Disseminate all pertinent data to human rights rapporteur.

l. Prepare a guideline for the DISTRIBUTION PTS regarding their organization and tasks.

m. Collect data from Sectors on the need of the affected people, eg. farming tools, seeds, fertilizer, house building materials, health centres etc.

16. Coordinating Instructions

a. Boundaries - see Annex A.

- b. Routes - see Annex C.
- c. ROE - see Operational Directive No 02-ROE.
  - (1) Weapon readiness Status
    - (a) State Green - Sectors 1, 2, 3, and 5.
    - (b) State Yellow - Sectors 4A, 4B, and 4C.
- d. Information Collection Requirements. The Force Commander's Primary Information Requirements (PIR) will be distributed weekly or more frequently if required.
- e. Timings
  - (1) RIP (GHANBATT/ZAMBATT). As per WNGO dated 23 Aug 94.
  - (2) Matrix depicting future deployment schedule is shown at Annex E.

#### ADMINISTRATION AND LOGISTICS

- 17. See ADMINORD no 17 TBI before 4 Sep 94.
  - a. Medical. See MEDOPS 01 dated 22 Aug 94.

#### COMMAND AND SIGNALS

- 18. Control. See Annex D. MILOB HQ and CIVPOL HQ are to effect liaison, coordination and administrative control through discrete channels. OP SUPPORT HOPE (US), OP PASSAGE (CDN) and OP GABRIEL (UK), although under national control vice UNAMIR are to operate in close cooperation and in support of the UNAMIR humanitarian effort. Sector HQ are to report to the Force HQ indicated below:
  - a. Sectors 1, 2 and 5 - HQ Main; and
  - b. Sectors 3, 4A, 4B and 4C - HQ TAC.
  - c. Location of Headquarters.
    - (1) UNAMIR Force HQ - KIGALI.
    - (2) UNAMIR Force HQ (TAC) - BUTARE.
    - (3) Sector 1 - BUYUMBA.
    - (4) Sector 2 - KIGALI.
    - (5) Sector 3 - GITARAMA.
    - (6) Sector 4A - GIKONGORO.
    - (7) Sector 4B - KIBUYE.

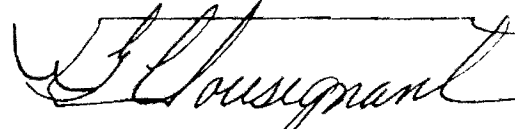
(8) Sector 4C - CYANGUGU.

(9) Sector 5 - GISENYI.

d. Frequencies and Callsigns. See CEOI 003/94.

19. References A, B and C are cancelled.

20. Acknowledge.



GC Tousignant  
MGen  
Force Commander

Annexes:

Annex A. Force Deployment  
Annex B. Humanitarian Control Measures  
Annex C. Routes  
Annex D. Command and Control Network  
Annex E. Future Deployment Schedule

Distribution List:

External:

<u>Action:</u>	<u>Copy No</u>
US Forces	1
Canadian Contingent	2
AUSMED	3
BRIT CON	4
MILOB Gp HQ	5
Sector 1	6
Sector GHANBATT	7
Sector MALAWI COY	8
Sector ZAMBATT	9
Sector FRAFBATT	10
Sector ETHIOBATT	11
Sector TUNBATT	12
UNCIVPOL	13

Information:

UNDPKO ( Mission Planning Service ) 14

Internal:

Action:

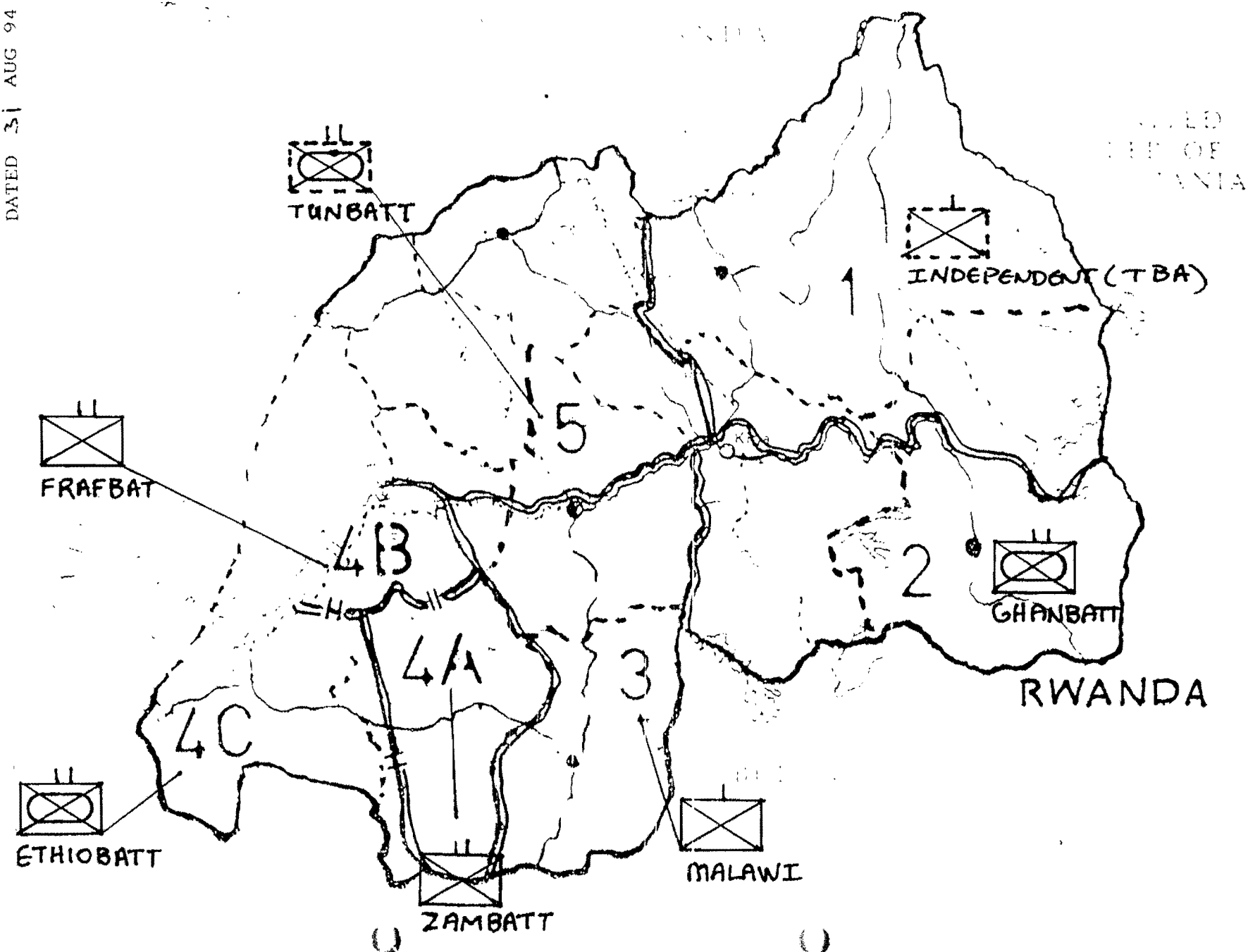
MA to FC 15  
DFC/COS 16  
G1/CMPO 17  
G2 18  
G3 19  
G3 Plans 20  
G4 21  
G5/CAO 22  
G6/FSO 23  
MOVCON 24  
HAC 25  
Camp Comdt 26  
FMO 27

Information:

SRSG's Office 28  
File 29  
Spare 30-34

# DEPLOYMENT

ANNEX A  
TO OP ORDER 18  
DATED 31 AUG 94





**Rwanda**

50 km  
50 miles

**Uganda**

**Zaire**

**Tanzania**

**Burundi**

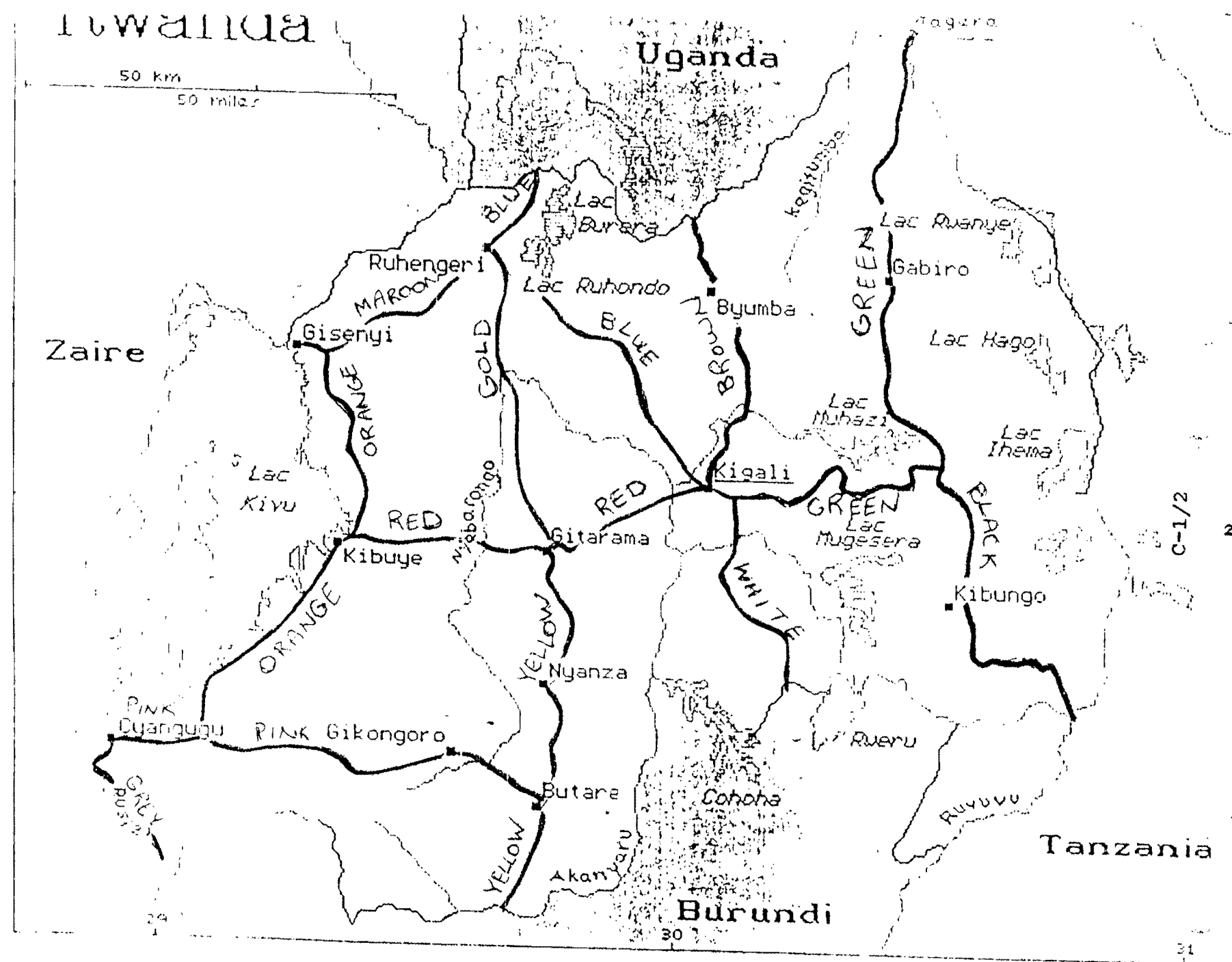
**LEGEND**  
 NODAL POINT -   
 WAY STATION -

**Geographical Features:**  
 Lakes: Lac Kivu, Lac Ruhondo, Lac Burera, Lac Ruvubu, Lac Muhazi, Lac Ihema, Lac Ruvubu.  
 Towns: Kigali, Gikongoro, Butare, Gisenyi, Ruhengeri, Byumba, Kibuye, Gitearama, Nyanza, Cyangugu, Bujumbura, Kibungo.  
 Rivers: Ruvubu, Ruvubu.

SER	ROUTE	DESCRIPTION
(a)	(b)	(c)
1	BLUE	KIGALI - SHYORONG - TARE - NYARTOVU - RUHENGARI-GISORO
2	MAROON	RUHENGARI - MUKINGO - MUKAMURA - GISENYI
3	ORANGE	JUNCTION POINT-B - MABANZA - KIBUYE - CYESHA - JUNCTION POINT-C
4	PINK	CYANGUGU - NYAOINJANO - GIKONGORO - BUTARE
5	YELLOW	GITARAMA - KIGOMA - BUTARE - BUJUMARE
6	RED	KIGALI - GITARAMA - MABANZA
7	WHITE	KIGALI - BUGESERA - KANZENZE - MUYINGA
8	BROWN	KIGALI - BIVERAMUURA - RUREMBO - BYUMBA - KABALE
9	GREEN	KIGALI - KANOMBE - GIKORO - RWANAGAMA - KAYONZA - MURAMBI - GABIRO - MURENGERO - MATIMBA - KAMPALA
10	BLACK	RWAMAGAMA - KEYONZA - JUNCTION POINT-D (KIBUNGO(SOUTH)) - RUSUMO - BUKUBA
11	GOLD	MUSUBATI - GATUMBE - NYAMUTERA - RUHENGARI
12	GREY	CYANGUGU - JUNCTION POINT-A (BUKAVU(NORTH)) - CYIMBOGO - GISHOMA - BUGARAMA - UVIRA

JUNCTION POINT-A: GRID 753 204  
JUNCTION POINT-B: GRID 956 323  
JUNCTION POINT-C: GRID 241 125  
JUNCTION POINT-D: GRID 619 639

ANNEX C  
TO OP ORDER 18  
DATED 31 AUG 94

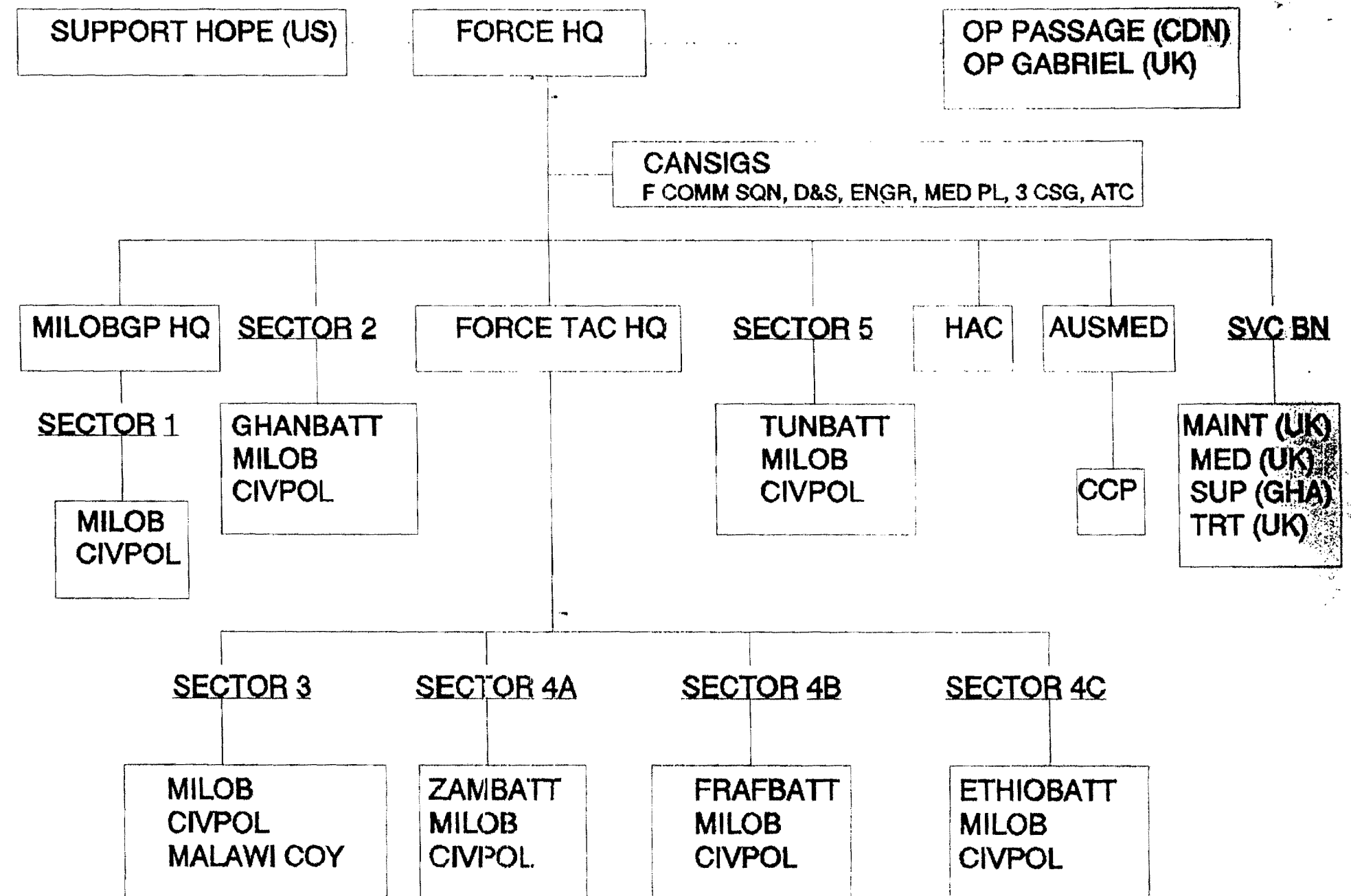


U

U

# UNAMIR COMMAND AND CONTROL

ANNEX D TO  
OP ORDER 18  
DATED 31 AUG 94



# CONTINGENT DEPLOYMENT PLANNING SCHEDULE

ANNEX E TO

OP ORDER 18

DATED 31 AUG 94

AUGUST											SEPTEMBER					DATED 3/ AUG 94				
DATE	20	21	22	23	24	25	26	27	28	29	30	31	1	2	3	4	5	6	7	8
INDBATT														R						
MALICOY									RTM							R				
MALAWI	R&A	R&A	R&A	A	A	A	A	A&M	A&M	DC										
NIBATT												RTM			R				A	A
PAKBATT																				
TUNBATT			R	R	R								A	A	A	A	A	M	M	M
ZAMBATT						A	R							A			M	M		
DATE	20	21	22	23	24	25	26	27	28	29	30	31	1	2	3	4	5	6	7	8

RECCE - (R)

ADVANCE PARTY - (A)

MAINBODY - (M)

DEPLOYMENT COMPLETED - (DC)

READY TO MOVE - (RTM)

ANNEX E TO

OP ORDER 18

DATED 31 AUG 94

SEPTEMBER

9	10	11	12	13	14	15	16	17	18	19	20	21	22	23	24	25	26	27	28	29	30
A	M	M																			
M	M	M	M	M	M	M	M														
9	10	11	12	13	14	15	16	17	18	19	20	21	22	23	24	25	26	27	28	29	30

RECCE - (R)

ADVANCE PARTY - (A)

MAINBODY - (M)

DEPLOYMENT COMPLETED - (DC)

READY TO MOVE - (RTM)