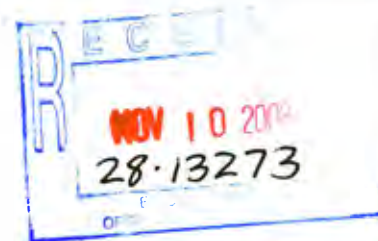


Noted. No response need.

UNIS



DSG



To: Members of the Board of Trustees
From: Dr. Kenneth Wrye, Director

Date: 4 November 2008

Re: Highlights of Student Enrollment for the Academic Year 2008/2009 ✓

1. Total student enrollment is 1541. Although lower than that of last year (23 students less), it includes 51 students more than the budgeted number. Also this year, we have a continually growing UN student population, 52% of our student body is UN affiliated (+ 1% vs. same period last year); we achieved this percentage increase despite a lower enrollment of new UN students. This year we enrolled 168 new UN students as compared to 189 of last year, but this year's number is still higher than that of 2006 (155), 2005 (139) and 2004 (123). The High School has 20 students less than those enrolled in 2007, bringing the overall enrollment to a more manageable number of students. The Middle School had 10 students fewer than the same period last year (mainly because a smaller 5th grade). The Junior School this year had 12 more students than 2007. This year's JA exceeded the maximum number of students by one because we experienced a higher than usual yield (+ 16%) from the non-legacies (i.e. non-UN and non-siblings) as well as a higher than usual number of UN students that enrolled during the summer period (15 compared to 8 in 07/08 and 06/07; 3 in 05/06 and 9 in 04/05). Because the admissions policy allows for qualified UN students to join the School regardless of enrollment, again this year, M4, T3 and T4 have a large student population. This year 355 places were offered, 274 places were accepted (77% yield of contracts) and 258 new students enrolled (73 % of all places offered – 16 students withdrew by October 1st). Applicants to both campuses numbered 736 (81 more applications than last year). We accepted 48% of the students (2% less than last year). By affiliation, acceptances were as follows: 90% of UN applicants were accepted, 36% of IN applicants were accepted, and 40% of HC applicants were accepted. By affiliation, 77% of UN students who were offered a place enrolled, 67% IN students enrolled, and 55% of HC students enrolled.

2. Affiliation: We are getting closer to achieving the goal of a school-wide percentage of 55% UN families. The increasing trend of UN-affiliated students continues, representing 52% of the total school population. International students represent 32% and Host Country students 16%. The percentage of UN students has increased by 12% since 2001. This year there was a decrease of 1% in Host Country students, while the percentage of International students remained the same. The incoming **new** students were 65% UN-affiliated. This year new students represented 17% of the total student body (same as last year).

3. Countries represented: The students represent 121 countries, one less than last year.

4. Mother tongues represented: The students speak 94 mother tongues, which is 2 more than last year.

5. Gender Distribution: Also this year we achieved an even balance between boys and girls, 50/50!

6. Children of Ambassadors and Consuls General: 18, which is seven less than last year (2 children of Ambassadors less and 5 children of Consuls General less).

7. New Students: New students this year represent 17% of all students. Forty-three of our new students (17%) have siblings at UNIS. 77% of places offered to applicants were accepted, 2% less than last year (79%) and 4% less than the year before (80%), but 4% higher than 2005. This year the waitlist included 49 children whom UNIS could not accommodate.

8. Reregistration/Attrition: Attrition continues to increase, 11.2% of students withdrew at the end of the school year, higher than last year's 10.3% and 8.4% of 2006 and 9.6% of 2005. Attrition in 2004 was 13%.

Enclosures (13): Enrollment by Grade; Countries Represented by Students; Mother Tongues Spoken by Students; Class of 2009; Student Affiliation 2000-2008; Student Enrollment 1948-2008: graph; UNIS Queens Student Enrollment 1947-2008: graph; Student Enrollment: UN and non-UN 1947-2008: graph; Schoolwide Reregistration 1994-2008: graph; Reregistration Overview 1994-2008: graph; Children of Ambassadors; Children of Consuls General; Regional Distribution of Students.

UNIS Student Enrollment by Grade as of 1 October 2008

1	2	3	4	5	6	7	8	9	10
2007/08 Grade Sections	Students June '08	Returning Students	New Students	Total of #3 and #4	Number of Sections	Average Section Size	Target Section Size	Class Size Range	Total Target/Max
Manhattan									
JA (5) *	91	1	95	96	5	19	17	15-19	85/95
J1 (4)	74	80	10	90	5	18	18	16-20	90/100
J2 (5)	95	66	7	73	4	18	18	16-20	72/80
J3 (5)	97	88	14	102	5	20	19	18-22	95/110
J4 (5)	<u>95</u>	<u>89</u>	<u>14</u>	<u>103</u>	<u>5</u>	21	20	18-22	100/110
Total (24)*	452	324	140	464	24				
		90.8%							
M1 (5)	108	82	16	98	5	20	21	20-24	105/120
M2 (5)	111	100	13	113	5	23	22	20-24	110/120
M3 (5)	117	96	12	108	5	22	22	20-24	110/120
M4 (5)	<u>116</u>	<u>106</u>	<u>11</u>	<u>117</u>	<u>5</u>	23	22	20-24	110/120
Total (20)	452	384	52	436	20				
		89.1%							
T1 (5)	116	95	12	107	5	21	22	11 from QM4	110/120
T2 (n/a)	122	103	10	113	n/a	n/a	n/a	n/a	
T3 (n/a)	123	114	8	122	n/a	n/a	n/a	n/a	
T4 (n/a)	<u>126</u>	<u>119</u>	<u>3</u>	<u>122</u>	n/a	n/a	n/a	n/a	
Total	487	431	33	464					
		86.2%							
Total Manhattan	1391	1139	225	1364					
		88.4%							
QUEENS									
QJA (1)	17		18	18	1	18	17	15-19	17/19
QJ1 (1)	14	16	3	19	1	19	18	16-20	18/20
QJ2 (1)	19	12	2	14	1	14	18	16-20	18/20
QJ3 (1)	18	18	2	20	1	20	20	18-22	20/22
QJ4 (1)	20	17	1	18	1	18	20	18-22	20/22
QM1 (1)	23	20	3	23	1	23	22	20-24	22/24
QM2 (1)	22	20	1	21	1	21	22	20-24	22/24
QM3 (1)	24	18	2	20	1	20	22	20-24	22/24
QM4 (1)	<u>23</u>	<u>23</u>	<u>1</u>	<u>24</u>	<u>1</u>	<u>24</u>	<u>22</u>	20-24	22/24
Total Queens (9)	180	144	33	177	9		181		
		91.7%							
Grand Totals	1571	1283	258	1541					
		88.8%							
*Includes JA (Manhattan) Repeating Student									



Countries Represented by UNIS Students 2008/2009

Albania	3	Ghana	5	Pakistan	14
Algeria	3	Guyana	1	Palestine	1
Argentina	1	Haiti	2	Paraguay	1
Armenia	9	Honduras	3	Peru	3
Australia	18	Hungary	3	Philippines	5
Austria	10	Iceland	3	Poland	6
Azerbaijan	4	India	11	Portugal	3
Bahamas	4	Indonesia	4	Qatar	6
Bahrain	4	Iran	3	Romania	6
Bangladesh	3	Ireland	8	Russian Federation	16
Belgium	13	Israel	10	Rwanda	3
Benin	2	Italy	33	Samoa	3
Bhutan	1	Ivory Coast	1	Saudi Arabia	1
Bosnia	1	Japan	50	Senegal	3
Botswana	2	Jordan	2	Serbia	6
Brazil	19	Kazakhstan	3	Singapore	5
Brunei Darussalam	5	Kenya	10	Slovenia, Republic of	1
Bulgaria	3	Korea, Republic of	13	South Africa	15
Burkina Faso	4	Korea, DPR of	1	Spain	27
Cameroon	1	Kuwait	11	Sri Lanka	2
Canada	25	Kyrgyzstan	3	St. Kitts and Nevis	1
Cape Verde	2	Lebanon	1	Sudan	2
China	13	Lesotho	2	Sweden	17
Colombia	7	Lithuania	3	Switzerland	16
Costa Rica	2	Madagascar	1	Taiwan	1
Cuba	1	Malaysia	8	Tanzania	1
Czech Republic	12	Maldives	1	Thailand	4
Denmark	15	Mali	3	Trinidad & Tobago	5
Djibouti	1	Mauritania	3	Tunisia	4
Dominica	1	Mexico	5	Turkey	6
Dominican Republic	2	Monaco	1	Turkmenistan	3
Ecuador	1	Mongolia	3	Uganda	1
Egypt	8	Montenegro	1	Ukraine	2
Eritrea	5	Morocco	10	United Kingdom	50
Estonia	2	Mozambique	1	United States	686
Finland	11	Nepal	9	Uruguay	2
France	67	Netherlands	22	Uzbekistan	3
Gabon	2	New Zealand	6	Venezuela	2
Georgia	3	Nigeria	6	Vietnam	1
Germany	31	Norway	16	Zimbabwe	3
		Oman	1		

Total Countries* 121

Total Students 1541

* This representation does not demonstrate the complexity of multiple citizenship of some UNIS students. In such cases, the country least frequently represented in the count is shown.



United Nations International School

Mother Tongues Spoken by UNIS Students 2008/2009

Afrikaans	English	Lithuanian	Sesotho
Albanian	Estonian	Lusoga	Setswana
Amharic	Farsi/Persian	Malagasy	Shona
Arabic	Finnish	Malay	Sindhi
Armenian	Fon	Mandarin	Sinhala
Azerbaijani	French	Marathi	Slovenian
Azeri	Fulani	Mongolian	Spanish
Bahasa Indonesia	Georgian	Montenegrin	Swahili
Bambara	German	Myanmar	Swedish
Bengali	Greek	Nepali	Tagalog
Berber	Gujarati	Norwegian	Tamil
Bosnian	Hebrew	Oromo	Telugu
Bulgarian	Hindi	Pilipino	Thai
Cantonese	Hungarian	Polish	Tigrinia
Catalan	Icelandic	Portuguese	Turkish
Cebuano	Igbo	Pulaar	Turkmen
Creole	Italian	Punjabi	Ukrainian
Croatian	Japanese	Pushto	Urdu
Czech	Kannada	Putonghua	Vietnamese
Danish	Kazakh	Romanian	Wolof
Dhivehi	Kikuyo	Russian	Xhosa
Dutch	Kinyarwanda	Samoan	Yoruba
Dzongkha	Korean	Sanskrit	Zulu
	Kyrgyz	Serbian	

Total Mother Tongues	94
Total Students	1,541

October 1, 2008



UNITED NATIONS INTERNATIONAL SCHOOL
Class of 2009

Nationalities 45

Mother Tongues 34*

Gender 59 boys
63 girls

122 total students

Parental Affiliation

68	56%	United Nations Community
35	29%	International Community
19	15%	Host Country Community

Candidates for the IB Diploma

56	55%	United Nations Community
29	28%	International Community
17	17%	Host Country Community

102 = 84% of the Class

Of the 102, 53 (52%) are girls and 49 (48%) are boys.

Parental Affiliation	Number of Years Students Have Been at UNIS			
	0-2 years	3-5 years	6-9 years	10 or more
United Nations	19	22	12	15
International	2	3	6	24
Host Country	0	1	4	14
TOTAL= 122	21 (17%)	26 (21%)	22 (18%)	53 (44%)
38 (31%) students have been here since kindergarten				
75 (62%) students have been here 6 years or more				

*** Mother Tongues Represented by Students**

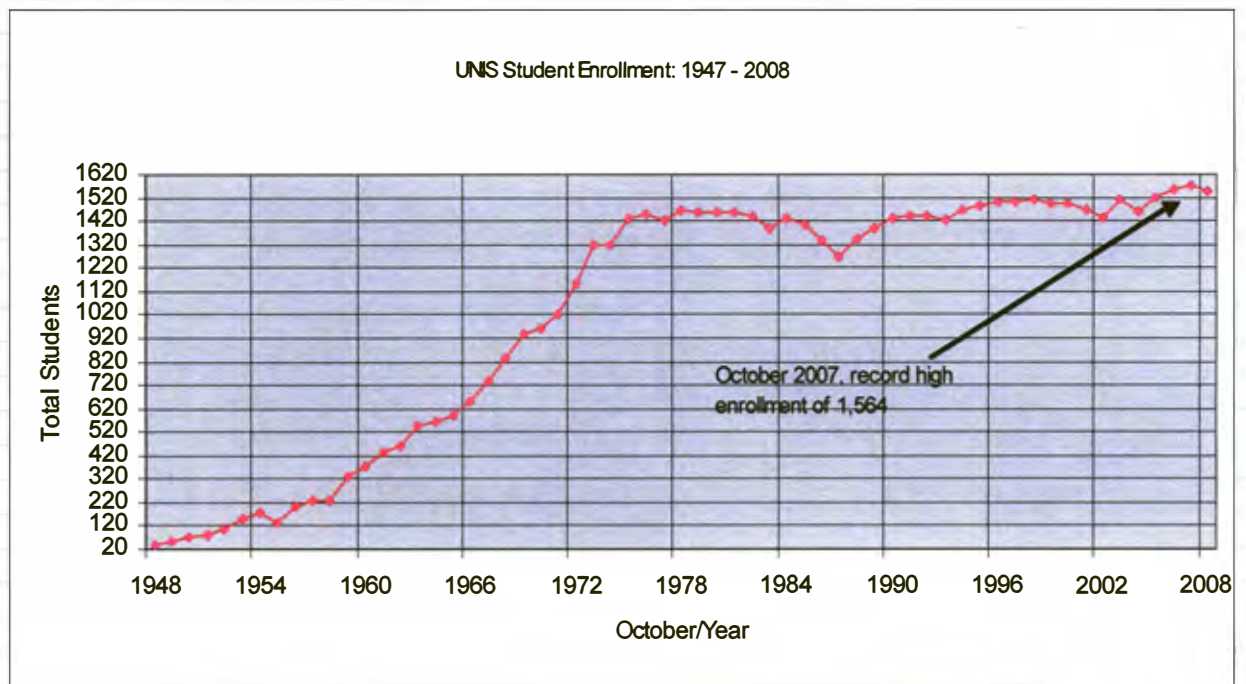
Arabic	German	Portuguese
Armenian	Hindi	Russian
Azerbaijani	Icelandic	Serbian
Bahasa Indonesian	Italian	Shona
Chinese	Japanese	Spanish
Czech	Korean	Swahili
Danish	Marathi	Swedish
Dutch	Mongolian	Thai
English	Nepali	Vietnamese
Farsi/Persian	Norwegian	Xhosa
French	Polish	Yoruba
Fulani		

UNIS Student Affiliation: October 2000-October 2008

				2000	2001	2002	2003	2004	2005	2006	2007	2008
1	BY SCHOOL											
	Manhattan, K-4th grade			476	448	430	455	444	465	467	452	464
	Manhattan, 5-8th grade			406	436	432	445	431	444	441	446	436
	Manhattan, 9-12th grade			402	388	392	430	431	446	460	484	464
	Manhattan Total			1284	1272	1254	1330	1306	1355	1368	1382	1364
	Queens, K-8th grade			207	195	180	180	154	163	186	182	177
	Total Students			1491	1467	1434	1510	1460	1518	1554	1564	1541
	Total Number of Countries			109	112	117	118	111	115	117	122	121
	Total Number of Languages			70	73	85	91	88	89	90	92	94
				2000	2001	2002	2003	2004	2005	2006	2007	2008
2	BOYS and GIRLS			Boys/Girls	Boys/Girls	Boys/Girls	Boys/Girls	Boys/Girls	Boys/Girls	Boys/Girls	Boys/Girls	Boys/Girls
	Queens, K-8th grade			99 108	94 101	83 97	80 100	72 82	78 85	88 98	83 99	79 98
	Manhattan, K-4th grade			211 265	203 245	202 228	221 234	212 232	237 228	221 246	227 225	229 235
	Manhattan, 5-12th grade			372 436	378 446	392 432	426 449	409 453	419 471	430 471	470 460	455 445
	Total			682 809	675 792	677 757	727 783	693 767	734 784	739 815	780 784	763 778
	Percentage Boys/Girls			46% 54%	46% 54%	47% 53%	48% 52%	47% 53%	48% 52%	48% 52%	50% 50%	50% 50%
3	AFFILIATION: ALL STUDENTS			2000	2001	2002	2003	2004	2005	2006	2007	2008
	Queens, K-8th grade	UN	39 19%	39 20%	36 20%	41 23%	38 25%	41 25%	49 26%	48 26%	48 27%	
		IN	93 45%	87 45%	78 43%	75 42%	61 40%	64 39%	80 43%	85 47%	82 46%	
		HC	75 36%	69 35%	66 37%	64 35%	55 35%	58 36%	57 31%	49 27%	47 27%	
	Manhattan, K-4th grade	UN	164 35%	164 37%	167 39%	172 38%	179 40%	209 45%	240 51%	257 57%	268 58%	
		IN	202 42%	183 41%	165 38%	188 41%	185 42%	181 39%	163 35%	140 31%	147 32%	
		HC	110 23%	101 22%	98 23%	95 21%	80 18%	75 16%	64 14%	55 12%	49 10%	
	Manhattan, 5-12th grade	UN	364 45%	381 46%	387 47%	400 46%	402 47%	417 47%	434 48%	492 53%	486 54%	
		IN	276 34%	274 33%	274 33%	298 34%	280 32%	293 33%	290 32%	269 29%	269 30%	
		HC	168 21%	169 21%	163 20%	177 20%	180 21%	180 20%	177 20%	169 18%	145 16%	
	Total All Student Affiliation	UN	567 38%	584 40%	590 41%	613 41%	619 42%	667 44%	723 47%	797 51%	802 52%	
		IN	571 38%	543 37%	517 36%	561 37%	526 36%	538 35%	533 34%	494 32%	498 32%	
		HC	353 24%	340 23%	327 23%	336 22%	315 22%	313 21%	298 19%	273 17%	241 16%	
4	AFFILIATION: NEW STUDENTS			2000	2001	2002	2003	2004	2005	2006	2007	2008
	Queens, K-8th grade	UN	14 30%	10 37%	09 36%	10 29%	4 17%	7 20%	11 22%	8 24%	9 27%	
		IN	15 33%	11 41%	12 48%	17 50%	8 35%	12 33%	30 59%	19 58%	17 52%	
		HC	17 37%	06 22%	04 16%	7 21%	11 48%	17 47%	10 19%	6 18%	7 21%	
	Total		46	27	25	34	23	36	51	33	33	
	Manhattan, K-4th grade	UN	59 44%	53 55%	45 41%	47 38%	59 50%	72 52%	86 75%	84 69%	88 63%	
		IN	51 38%	31 32%	41 37%	59 47%	49 41%	48 35%	21 19%	27 22%	45 32%	
		HC	25 18%	13 13%	24 22%	19 15%	11 9%	18 13%	7 6%	11 9%	7 5%	
	Total		135	97	110	125	119	138	114	122	140	
	Manhattan, 5-12th grade	UN	54 58%	55 72%	50 69%	61 50%	69 72%	60 69%	65 69%	97 93%	71 83%	
		IN	35 37%	17 22%	17 24%	51 42%	22 23%	23 26%	24 25%	7 7%	10 12%	
		HC	05 05%	05 06%	05 07%	10 8%	5 5%	4 5%	6 6%	0 0%	4 5%	
	Total		94	77	72	122	96	87	95	104	85	
	Total New Student Affiliation	UN	127 46%	114 57%	104 50%	118 42%	132 56%	139 53%	162 62%	189 73%	168 65%	
		IN	101 37%	61 30%	70 34%	127 45%	79 33%	83 32%	75 29%	53 20%	72 28%	
		HC	47 17%	26 13%	33 16%	36 13%	27 11%	39 15%	23 9%	17 7%	18 7%	
	TOTAL NEW STUDENTS		275	201	207	281	238	261	260	259	258	
5	Attrition percentage			11.4%	8.3%	10.4%	9.2%	13.0%	9.6%	8.4%	10.3%	11.2%
						</						

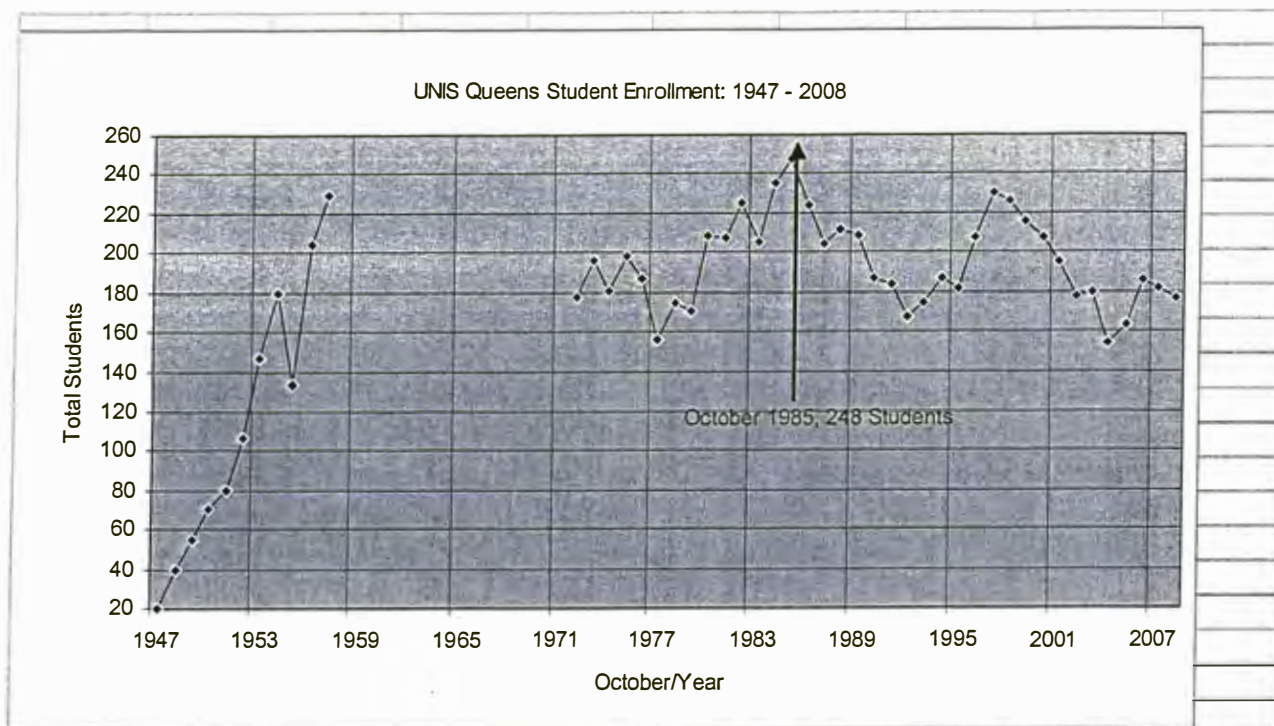
UNIS Student Affiliation: October 2000-October 2008

[illegible]



UNIS Manhattan and Queens 1947-2008: Total Student Enrollment

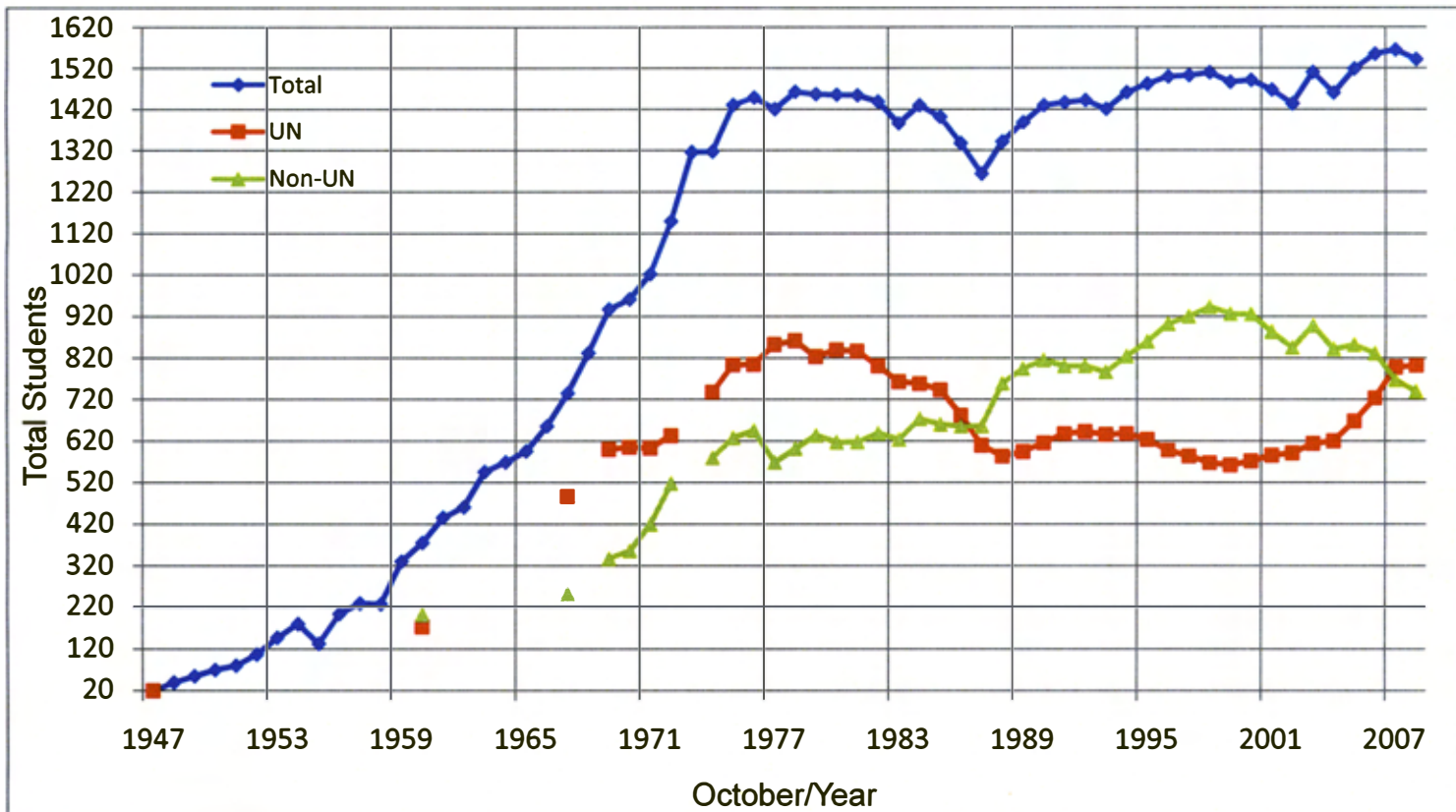
- 1947 Nursery School founded in Lake Success, New York
- 1949 First Grade established; from this year onward, another grade introduced until UNIS has a K-12 program
- 1950 UNIS relocates to Parkway Village, Queens, New York
- 1958 Secondary School moves to Manhattan, to temporary quarters. UNIS Queens retains a K-5 program
- 1963 First Graduating Class
- 1973 UNIS Manhattan moves to its permanent premises on 25th Street & the East River
- 1980 UNIS Queens adds a sixth grade
- 1983 UNIS Queens moves to Jamaica Estates, Queens, New York
- 1984 Board of Trustees ends policy of reserving space for UN children because of its financial impact on the School
- 1993 Beginning of a four-year comprehensive renovation of both campuses
- 1996 UNIS Queens adds a seventh grade
- 1997 UNIS Queens adds an eighth grade to be able to offer a full middle school program
- 2000 Board of Trustees approves a policy permitting children of UN parents who have just been posted to New York to enroll, regardless of class size, provided the children meet admissions criteria
- 2001 Both Manhattan and Queens diminish their JA (Kindergarten) classes by one section to gradually decrease overall student population
- 2002 Manhattan JA restores a 5th section



UNIS Queens 1947-2008: Student Enrollment

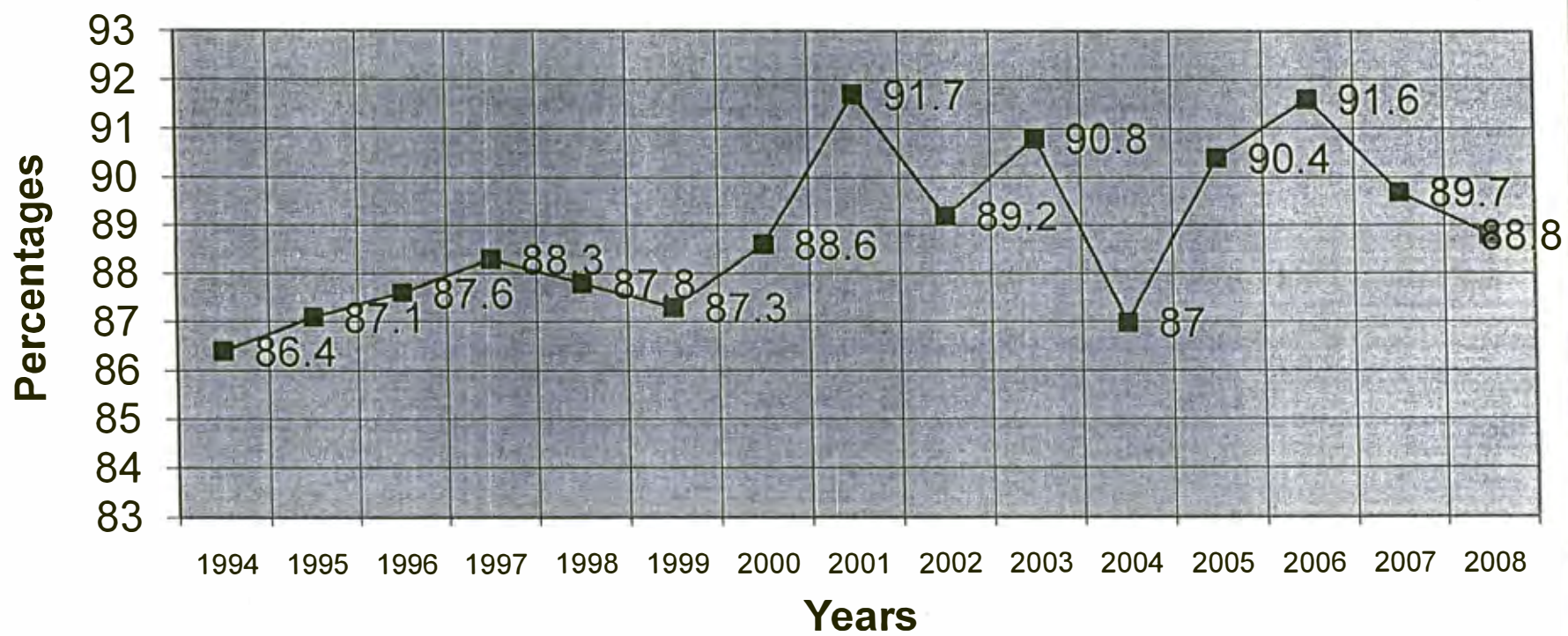
- 1947 Nursery School founded in Lake Success, New York
- 1949 First Grade established; from this year onward, another grade introduced until UNIS has a K-12 program
- 1950 UNIS relocates to Parkway Village, Queens, New York
- 1958 Secondary School moves to Manhattan, to temporary quarters. UNIS Queens retains a K-5 program
- 1980 UNIS Queens adds a sixth grade
- 1983 UNIS Queens moves to Jamaica Estates, Queens, New York
- 1993 Beginning of a four-year comprehensive renovation of both campuses
- 1996 UNIS Queens adds a seventh grade
- 1997 UNIS Queens adds an eighth grade to be able to offer a full middle school program
- 1998 Queens JA restricted to 30 students (15 in each section) to avoid overcrowding when these students move to J2 or J3, grades with only one section
- 1999 Board of Trustees approves a policy permitting children of UN parents who have just been posted to New York to enroll, regardless of class size, provided the children meet admissions criteria
- 2001 Queens JA downsized to one section to avoid a mixed-age class in J1 and overcrowding in subsequent grades
- 2001 Kew Forest School opens a Kindergarten program

UNIS Student Enrollment : 1947-2008 -- Total, UN and non-UN Students

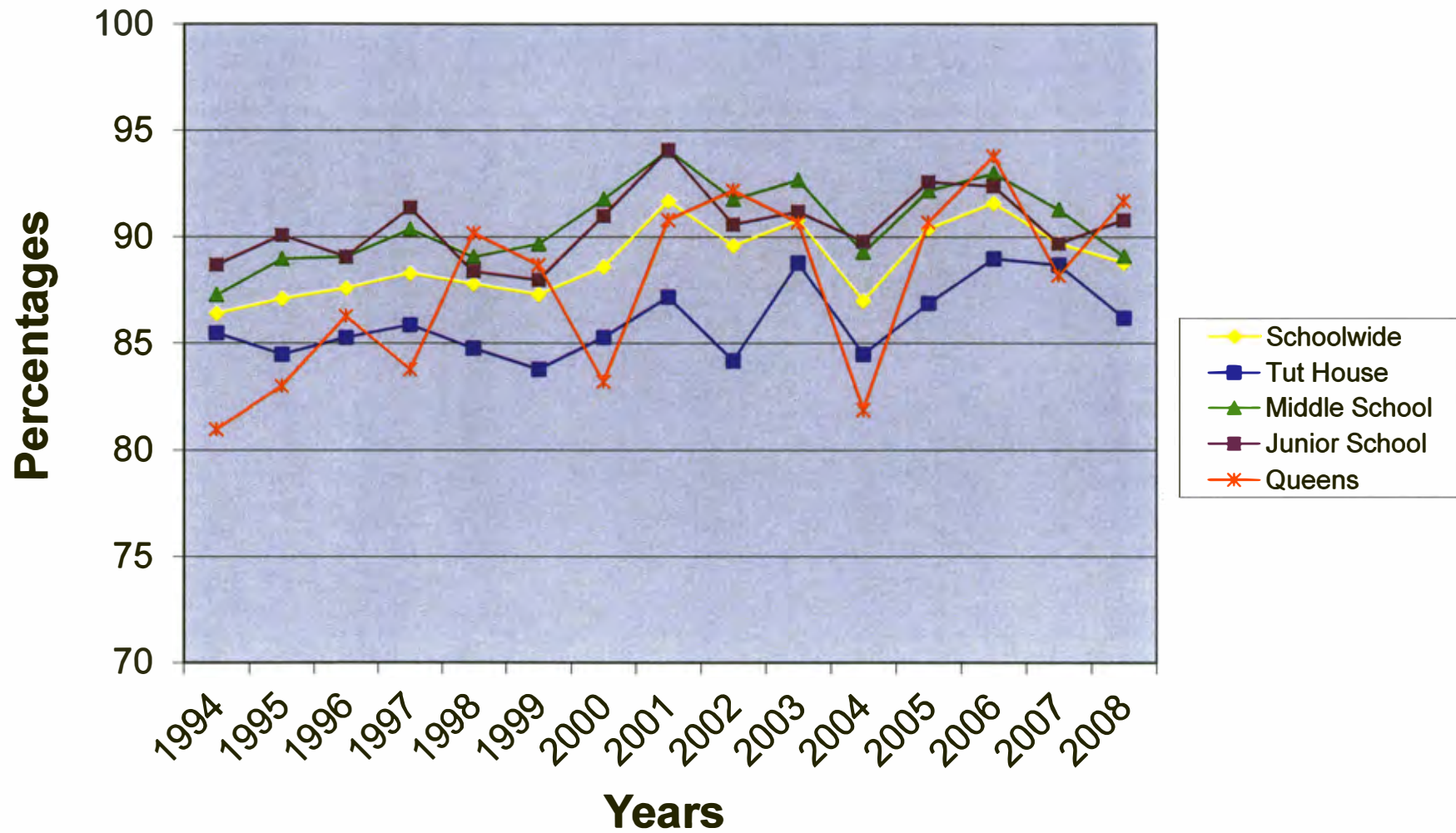


- 1947 School founded, 20 students, 100% UN-affiliated
- 1960 375 students, 46% UN-affiliated
- 1970 960 students, 63% UN-affiliated
- 1973 January, Manhattan Campus moves into its permanent site
- 1980 1,456 students, 58% UN-affiliated
- 1984 Board of Trustees ends the policy of reserving space for UN children because of the financial impact on UNIS
- 1990 1,456 students, 43% UN-affiliated
- 1998 1,509 students, 38% UN-affiliated
- 2000 Board of Trustees approves a policy permitting children of UN parents who have just been posted to NY to be admitted, provided the children can meet admissions criteria
- 2001 1,467 students, 40% UN-affiliated
- 2002 1,427 students, 41% UN-affiliated
- 2003 1,510 students, 41% UN-affiliated
- 2004 1,460 students, 42% UN-affiliated
- 2005 1,518 students, 44% UN-affiliated
- 2006 1,554 students (record high), 47% UN-affiliated
- 2007 1,564 students (record high), 51% UN-affiliated; UNIS's 60th Anniversary
- 2008 1,541 students, 52% UN-affiliated

UNIS Schoolwide Reregistration 1994-2008



Reregistration Overview 1994-2008





2008/2009
Children of Ambassadors

Brazil	Bernardo Viotti	Class of 2009
Brunei Darussalam	Hairul Latif	Class of 2018
	Hannah Latif	Class of 2013
Costa Rica	Francisco Urbina-Kandler	Class of 2009
Germany	Stefan Matussek	Class of 2009
Indonesia	Andreyka Natalegawa	Class of 2013
	Anantha Natalegawa	Class of 2009
Kuwait	Maryam Al-Murad	Class of 2013
Maldives	Reem Ahmed Khaleel	Class of 2015
Samoa	Francine Valmaria Elisaia	Class of 2019
Singapore	Keertan Menon	Class of 2011
Switzerland	Lena Maurer	Class of 2013
	Marion Maurer	Class of 2018
Venezuela	Gabriel Andres Valero	Class of 2011



2008/2009
Children of Consuls General

Ireland	Amy Burgess	Class of 2016
	Hugh Burgess	Class of 2013
Lithuania	Marija Paslauskaite	Class of 2010
Montenegro	Marko Milic	Class of 2012



REGIONAL DISTRIBUTION OF UNIS STUDENTS 2008/2009

According to Student Citizenship*

AFRICAN STATES	104	(6.8 %)
ASIAN STATES	209	(13.5 %)
EASTERN EUROPEAN STATES	81	(5.3 %)
LATIN AMERICA AND CARIBBEAN STATES	63	(4.1 %)
WESTERN EUROPEAN AND OTHER STATES	398	(25.8 %)
HOST COUNTRY	<u>686</u>	<u>(44.5 %)</u>
Total Number of Students	1,541	

AFRICAN STATES (28): Algeria 3, Benin 2, Botswana 2, Burkina Faso 4, Cameroon 1, Cape Verde 2, Djibouti 1, Egypt 8, Eritrea 5, Gabon 2, Ghana 5, Ivory Coast 1, Kenya 10, Lesotho 2, Madagascar 1, Mali 3, Mauritania 3, Morocco 10, Mozambique 1, Nigeria 6, Rwanda 3, Senegal 3, South Africa 15, Sudan 2, Tanzania 1, Tunisia 4, Uganda 1, Zimbabwe 3

ASIAN STATES (35): Bahrain 4, Bangladesh 3, Bhutan 1, Brunei Darussalam 5, China 13, India 11, Indonesia 4, Islamic Republic of Iran 3, Israel 10, Japan 50, Jordan 2, Kazakhstan 3, Korea (DPR of) 1, Korea (Republic of) 13, Kuwait 11, Kyrgyzstan 3, Lebanon 1, Malaysia 8, Maldives 1, Mongolia 3, Nepal 9, Oman 1, Pakistan 14, Palestine 1, Philippines 5, Qatar 6, Samoa 3, Saudi Arabia 1, Singapore 5, Sri Lanka 2, Taiwan 1, Thailand 4, Turkmenistan 3, Uzbekistan 3, Vietnam 1

EASTERN EUROPEAN STATES (17): Albania 3, Armenia 9, Azerbaijan 4, Bosnia 1, Bulgaria 3, Czech Republic 12, Estonia 2, Georgia 3, Hungary 3, Lithuania 3, Montenegro 1, Poland 6, Romania 6, Russian Federation 16, Serbia 6, Republic of Slovenia 1, Ukraine 2

LATIN AMERICAN AND CARIBBEAN STATES (19): Argentina 1, Bahamas 4, Brazil 19, Colombia 7, Costa Rica 2, Cuba 1, Dominica 1, Dominican Republic 2, Ecuador 1, Guyana 1, Haiti 2, Honduras 3, Mexico 5, Paraguay 1, Peru 3, St. Kitts and Nevis 1, Trinidad & Tobago 5, Uruguay 2, Venezuela 2

WESTERN EUROPEAN AND OTHER STATES (21): Australia 18, Austria 10, Belgium 13, Canada 25, Denmark 15, Finland 11, France 67, Germany 31, Iceland 3, Ireland 8, Italy 33, Monaco 1, Netherlands 22, New Zealand 6, Norway 16, Portugal 3, Spain 27, Sweden 17, Switzerland 16, Turkey 6, United Kingdom 50

HOST COUNTRY (1): United States of America 686

TOTAL NUMBER OF COUNTRIES REPRESENTED: 121

* This representation does not demonstrate the complexity of multiple citizenship of some UNIS students. In such cases, the country least frequently represented in the count is shown.

October 1, 2008