

MDR

G3 OPERATIONS/PLANS - TACTICAL HEADQUARTERS  
OPERATIONS

22 JULY - 19 OCT 1994

PLEASE RETAIN  
ORIGINAL ORDER

CONFIDENTIAL  
RTH/MG JUNE 2009

UN ARCHIVES

SERIES	<u>51062</u>
BOX	<u>117</u>
FILE	<u>1</u>
ACC.	<u>1998/0283</u>

Ops Branch  
HQ UNAMIR

19 Oct 94

8600-18/249

SDO 21/10

5000.15(G3 Plans)

FRAGMENTARY ORDER NO 01 TO OPERATION ORDER NO 20

Reference:

A. HQ UNAMIR 5000.1 dated 6 Oct 94.

Circled Orders

File

Dist List

Coo

G3

SITUATION1. General. As given in Reference A.

2. Specific. The population movement figures across Rwanda's borders are notoriously inaccurate and inconclusive. The number of routes, the patchy coverage of crossing points and the variety of reporting sources contribute to an overall statistical base which is, at best, imprecise, and more likely, erroneous. UN and UNAMIR planning is constrained by the poor quality of this information. This Fragmentary Order directs commanders to adopt more precise and independent methods, as a basis for statistical comparison.

MISSION

3. To monitor population movement across the Rwandan borders with Burundi, Tanzania and Zaire.

EXECUTION

4. General Outline. Sector Commanders of Sectors 1,2,3,4 and 5 are to establish border monitoring posts at all identifiable crossing points with Burundi, Tanzania and Zaire.

Tasks. Sector Commanders are to:

a. Identify all crossing points within their Sectors which fulfil any one of the following criteria:

(1). Are capable of wheeled traffic.

(2). Are well used by people moving on foot.

(3). If situated on water, are suitable landing sites for boats carrying over 20 people.

b. Man these crossing points from 0600 to 1900 hrs daily, utilising MIL.OBs or infantry as appropriate.

c. Keep an accurate record of people crossing in both directions, to include the following:

- (1). No of adults.
- (2). No of children.
- (3). Vehicles by type.

d. Report these figures to HQ UNAMIR, as part of the Daily SITREP.

e. Maintain local statistical records of population movement.

6. Statistical Analysis. On receipt of the Daily SITREP figures from each Sector, SO2 G2 MilInfo is to incorporate them into the UNAMIR Daily SITREP and report them at the daily FC's Briefing as follows:

- a. Total inflow from each country.
- b. Total outflow from each country.
- c. Net gain/loss.
- d. Comparison with previous day's figures.
- e. On a weekly basis, comparison with previous week's figures.
- f. Any items of special interest.

7. Database. SO2 G2 MilInfo is to maintain a database of all figures collated from Sector sources, and provide access to those UNAMIR personnel who require to use it for planning purposes.

8. MILOBs. Sector Commanders may utilise MILOBs or infantry under command, as required, to fulfil the mission.

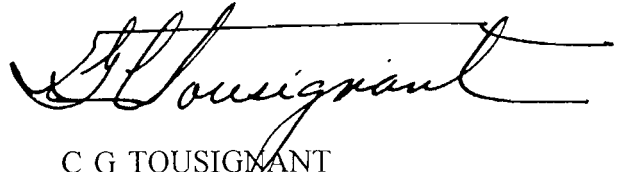
9. Coordinating Instructions.

a. Timings. Sector Commanders are to meet the following timings:

- (1). Identification of crossing points - by 21 Oct 94.
- (2). First date of monitoring - 23 Oct 94.
- (3). First report to HQ UNAMIR - by 2359 hrs 23 Oct 94.

UN RESTRICTED

10. Command and Signal. Normal methods of reporting are to be carried out by Sector Commanders. Should an inflow/outflow of special significance occur, Sector Commanders are to report the matter to HQ UNAMIR immediately.



C G TOUSIGNANT  
Maj Gen  
FC

Distribution:

External:

Action:

List C Serials 31-39

Information:

List A less Serial 7

List B serials 13-15 and 18

UN RESTRICTED

5000.1 (PLANS)

UNAMIR  
Force HQ  
KIGALI

6 Oct 94

OPERATION ORDER No 20

References:

- A. HQUNAMIR OPORD 18 dated 31 Aug 94
- B. HQUNAMIR OPORD 19 dated 4 Sep 94
- C. HQUNAMIR OPDIR No 02-ROE dated 22 Jul 94
- D. Amendment to HQUNAMIR OPDIR No 02 dated 10 Sep 94.
- E. HQUNAMIR 2000-1 FC DIR On Handling of Detainees (to be revised)

Situation

1. General Phase 1 of current operations continues to develop according to plan. The initiation of phase 2 has progressed satisfactorily to date (Ref B) with the introduction of Prefects and RPA forces into Sector 4.

2. Political. The political situation continues to improve. The Broad Based Government of National Unity (BBGNU) is functioning and government ministries are cooperating with UN and NGO agencies. Political representation has been introduced in to the former French Humanitarian Protected Zone without incident. The Government of ZAIRE, on several occasions, has said that Zairian territory will not be used to destabilize RWANDA and ZAIRE will facilitate the return of refugees. Despite these assurances, UNAMIR continues to receive reports of banditry, extortion and intimidation in refugee camps in GOMA by Zairian soldiers, ex-RGF elements and other extremist elements. President Bizimungu has asked UNHCR to do all it can to curb the intimidation and banditry in the camps, however, UNHCR is not mandated to provide security in this manner. The Zairian authorities have also been asked by several UN officials to make efforts in this regard, however, the situation has not improved. Talks have also been held with the President of TANZANIA regarding security within the camps on the Tanzanian side of the border with RWANDA.

3. UNAMIR Forces. Currently, three battalions, one independent company and support contingents are deployed. Advance parties of a Nigerian Company (NICOY), a Zambian Battalion (ZAMBATT) and a Tunisian Battalion (TUNBATT) are awaiting the arrival of equipment and respective main bodies. A Mali Company (MALICOY) recce party is expected to arrive in RWANDA shortly and the deployment of an Indian Battalion (INDBATT) is anticipated. MILOB teams have deployed to all sectors and CIVPOL deployment is progressing. Existing and planned troop deployments are shown at Annexes A and B.

7

4. RPA capability. Approximately five brigades. Many soldiers are newly recruited. To date battalion sized forces have been deployed to Sectors 4A, 4B and 4C.

5. Threat. There are reports of approximately 20,000 former RGF troops in camps in ZAIRE. The troops are based around the towns of GOMA and BUKAVU. About two thirds of the troops are believed to have been recruited during the war and are poorly trained, however, there are unconfirmed reports that these troops are receiving training from the Zairian army. The RGF are rapidly becoming organized at the moment and it is assessed that they have the capability to mount small scale insurgent operations. The likelihood of these operations occurring will grow. Their aim at the moment is most likely to be the destabilisation of the area to deter refugees from returning to RWANDA.

6. Humanitarian. With the cessation of hostilities UNREO representation has greatly increased within the country. As well, many NGO organizations have resumed operations. UNREO will continue to coordinate the strategy for humanitarian relief on behalf of the SRSG and provide direction to UN and NGO organizations. UNAMIR will assist UNREO in this pursuit by providing information on humanitarian affairs within sectors, providing resources when available and by creating secure conditions for humanitarian agencies to conduct their operations. Humanitarian activities for the present are concerned principally with the following:

- a. Provide humanitarian assistance to displaced persons inside and outside Rwanda.
- b. Assisting displaced persons in returning home.
- c. Monitoring human rights violations within the country.

#### Mission

7. UNAMIR is to provide security, and to assist and coordinate the humanitarian support of participating countries/organizations to facilitate a rapid and effective end to the crisis in RWANDA.

#### Execution

##### 8. General Outline

- a. Force operations will concentrate on creating secure conditions to facilitate the delivery of humanitarian assistance and the return of refugees and displaced persons to their homes.

b. A strong, resolute UN presence will continue to be provided in all sectors to ensure adequate security. The emphasis will be placed on patrolling, surveillance, escort duties and protective operations. High mobility and the flexibility to rapidly concentrate forces must be retained throughout the operation. Protected sites are to be established at locations where Rwandans are in need of security. Troops are to compliment the MILOB effort by monitoring and reporting on all activity within boundaries. MILOB operations will centre on escort operations and reconnaissance of sectors with an emphasis on the provision of information regarding humanitarian relief requirements and security incident investigation. When possible, UNAMIR logistic resources will be used to assist humanitarian relief organizations. The operation will be continued in 2 phases:

(1) Phase 1. Refugees have to be supported logistically until the next harvest of crops expected by December/January if the planting is to take place in September/October. Food, clean water, medical facilities, road and bridge reconstruction, home building material, farming tools, etc will have to be provided at WAY STATIONS and/or stockpiled at NODAL POINTS for onward distribution and/or production. Operations must ensure that these activities are free from interference by subversive and criminal interference. As conditions in RWANDA stabilize and the BBGNU gains control of the situation, the BBGNU, with NGOs, must be capable of providing sufficient assistance without direct UNAMIR and other nations' support. A progressive handover of all activities to the Government and NGOs will be conducted in accordance with a normalisation process. This phase will be accomplished when the majority of the refugees/displaced persons have returned to their homes and the routine life sequence is re-established. While the provision of security will be maintained, some troop redeployment may be necessary to effect the continuing hand over of responsibilities in Sector 4 to the Rwandan Government in accordance with Ref B. In some cases RPA troop dispositions will coincide with those of UNAMIR. Commanders are to make every effort to avoid a conflict of interest without relinquishing their capacity to carry out allotted tasks. Joint tasks are to be avoided. On order, two battalions will withdraw from Sector 4. The remaining battalion (yet to be determined) will deploy throughout Sector 4.

(2) Phase 2. Phase 2 will require the rationalization of troop deployment throughout RWANDA. The withdrawal of a significant number of troops will occur during this phase. In the short term, UNAMIR assistance will be provided by a smaller number of troops and MILOBS. In the long term, withdrawal of all UN elements will be effected.

9. Groupings and Tasks. Operation Passage (Canada) and Operation Gabriel (UK) have deployed in coordination with UNAMIR. Operation Support Hope (US) ceased on 28 Sep 94.

10. MILOB GP

a. Grouping.

(1) OPCON. MALAWICOY in Sector 3A and MALICOY in Sector 3B.

(2) In loc. Support elements as required.

b. Tasks.

(1) Phase 1.

(a) Continue deployment of UNMO to all Sectors;

(b) Identify safe haven areas for displaced persons;

(c) Participate in security operations with local authorities such as Communal Police and Gendarmerie (CIVPOL only);

(d) Monitor border crossing by refugees and armed individuals/groups in own area of responsibility;

(e) Provide security in refugee/displaced persons' camps in conjunction with co-located troops;

(f) Monitor insurgent activity;

(g) Provide escorts as required;

(h) Identify and list all the refugee/displaced persons' camps in the area of responsibility;

(i) Assist the NGOs in distributing food, water and medical support;

(j) Carry out recce and identify the food and water distribution points at commune level;



(k) Assist in the organization and provision of available resources to move the refugees/displaced persons;

(l) Be prepared to coordinate transport for the repatriation of refugees and displaced persons;

(m) Motivate the displaced persons to return to their homes;

(n) Assist in the maintenance of liaison with the RPA;

(o) Assist relief committees in the preparation of lists of the affected families;

(p) Assist the affected people in returning to and settling down at their respective homes; and

(q) Assist in the coordination of all activities of the NGOs.

(2) Phase 2. Assume control of sector operations as troop redeployment/withdrawal is effected. Withdraw on order.

11. CIVPOL.

a. Grouping. No change.

b. Tasks.

(1) Phase 1.

(a) Continue deployment to all sectors;

(b) Assist in the establishment of Communal Police Training Centres within the Prefectures(Sector 4);

(c) Supervise the screening of Communal Police and issuance of credentials;

(d) Initiate an abbreviated training programme;

(e) Assist to plan for disarming and facilitating integration of ex-RGF Gendarmes in RWANDA;

(f) Assist the Prefects in law and order maintenance;

(g) Monitor Police and Gendarme security situation;

(h) Investigate any cases of violations in conjunction with the local authorities;

(i) Monitor the process of the return of RWANDAN refugees/displaced persons and their resettlement;

(j) Conduct an intensive training programme to induct the Communal Police and serve as an advisor when necessary;

(k) Continue the training of new Gendarmes; and

(l) Assist MILOBs and ground troops in police matters.

(2) Phase 2. Conduct operations in coordination with MILOBs as troop redeployment/withdrawal is effected. Withdraw on order.

12. NICOY (Mechanized).

a. Grouping.

(1) As per UN Table of Organization and Equipment (Strength of 358 personnel). OPCON MILOB and CIVPOL.

b. Tasks. Tasks are as follows:

(1) Phase 1.

(a) Occupy and conduct operations in Sector 1;

(b) Provide armed escorts as required;

(c) Establish safe haven areas for displaced persons and secure these camps by static guards /mobile patrolling;

(d) Conduct protective operations:

(1) Road block;

(2) Check point (static and random);

(3) Vital point protection;

(4) Observation posts;

(5) Cordon and search; and

(6) Patrol, etc.

(e) Monitor border crossing by refugees and armed individual/groups in own area of responsibility;

- (f) Control the main axis in Sector 1;
- (g) Provide security in large towns;
- (h) Protect airfield/strips(s) within boundary;
- (i) Deny insurgent activity;
- (j) Detain /arrest any suspected individual/groups and hand them over in accordance with Reference E;
- (k) Guard UN installations in own area;
- (l) Identify and list all the refugee/displaced persons' camp in the area of responsibility;
- (m) Assist the NGOs in distributing food, water and medical support;
- (n) Assist the local authority in maintaining law and order in camps;
- (o) Carry out recce and identify the food and water distribution points at commune level;
- (p) Be prepared to provide transport for the repatriation of refugees and displaced persons;
- (q) Motivate the displaced persons to return to their homes;
- (r) Coordinate with the RPA regarding the security of the people;
- (s) Assist relief committees in preparation of list of the affected families;
- (t) Assist the affected people in returning to and settling down at their respective homes;
- (u) Assist in the distribution of house building material and farming tools;
- (v) Assist in the coordination of all activities of the NGOs; and
- (w) On Order, handover all activities to the Government and NGOs progressively as the situation becomes normal.

(2) Phase 2. Withdraw on order.

13. GHANBATT (Mechanized).

a. Grouping.

- (1) As per UN Table of Organization and Equipment (strength of 820 personnel). OPCON MILOB and CIVPOL.

b. Tasks.

(1) Phase 1.

(a) Conduct relief in place with ZAMBATT in Sector 4A;

(b) Occupy and conduct operations in Sectors 2 and 6;

(c) Be prepared to conduct relief in place with INDBATT in Sector 6;

(d) Redeploy within Sector 2 once relieved in Sector 6;

(e) Provide armed escorts as required;

(f) Establish safe haven areas for displaced persons and secure these camps by static guards /mobile patrolling;

(g) Conduct protective operations:

(1) Road block;

(2) Check point (static and random);

(3) Vital point protection;

(4) Observation posts;

(5) Cordon and search; and

(6) Patrol, etc.

(h) Be prepared to react security forces in accordance with UNAMIR instructions on security of UN and NGO installations in KIGALI CITY until relieved by INDBATT in Sector 6 (TBI);

(i) Control the main axis within Sector;

(j) Provide security in large towns;

(k) Protect airfield/strips(s) within boundary;

(l) Deny insurgent activity;

(m) Detain /arrest any suspected individual/groups and hand them over in accordance with Reference E;

(n) Guard UN installations within boundary;

(o) Monitor border crossing by refugees and armed individual/groups in own area of responsibility;

(p) Identify and list all the refugee/displaced persons' camp in the area of responsibility;

(q) Assist the NGOs in distributing food, water and medical support;

(r) Carry out recce and identify the food and water distribution points at commune level;

(s) Be prepared to provide transport for the repatriation of refugees and displaced persons;

(t) Motivate the displaced persons to return to their homes;

(u) Coordinate with the RPA regarding the security of the people;

(v) Assist relief committees in preparation of list of the affected families;

(w) Assist the affected people in returning to and settling down at their respective homes;

(x) Assist in the distribution of house building material and farming tools;

(y) Assist in the coordination of all activities of the NGOs; and

(z) On Order, handover all activities to the Government and NGOs progressively as the situation becomes normal.

(2) Phase 2. Withdraw on order.

14. MALAWICOY (Motorized)

- a. Grouping. As per UN Table of Organization and Equipment (strength 167 personnel). Company is allocated under OPCON of MILOB Sector Comd.

b. Tasks

(1) Phase I

(a) Occupy and conduct operations in Sectors 3A and 3B;

(b) Conduct relief in place with MALICOY in Sector 3B on order;

(c) Redeploy to Sector 3A on completion of RIP;

(d) Provide armed escorts as required;

(e) Establish safe haven areas for displaced persons and secure these camps by static guards /mobile patrolling;

(f) Conduct protective operations:

(1) Road block;

(2) Check point (static and random);

(3) Vital point protection;

(4) Observation posts;

(5) Cordon and search; and

(6) Patrol, etc.

(g) Monitor border crossing by refugees and armed individual/groups in own area of responsibility;

(h) Control the main axis in Sectors 3A and 3B until RIP complete, then control main axis in Sector 3A;

(i) Provide security in large towns;

(j) Protect airfield/ strips(s) within boundary;

(k) Deny insurgent activities;

(l) Detain /arrest any suspected individual/groups and hand them over in accordance with Reference E;

(m) Guard UN installations in own area;

(n) Identify and list all the refugee/displaced persons' camp in the area of responsibility;

- (o) Assist the NGOs in the movement and distribution of food, water and medical support;
- (p) Carry out recce and identify the food and water distribution points at commune level;
- (q) Be prepared to provide transport for the repatriation of refugees and displaced persons;
- (r) Motivate the displaced persons to return to their homes;
- (s) Coordinate with the RPA regarding the security of the people;
- (t) Assist relief committees in preparation of list of the affected families;
- (u) Assist the affected people in settling down to their respective homes;
- (v) Assist in the distribution of house building material and farming tools;
- (w) Assist in the coordination of all activities of the NGOs; and
- (x) On order, handover all activities to the Government and NGOs progressively as the situation becomes normal.

(2) Phase 2. Withdraw on order.

15. MALICOY (Motorized)

a. Grouping. As per UN Table of Organization and Equipment (strength 150 personnel). Company is allocated under OPCON of MILOB Sector Comd.

b. Tasks

(1) Phase I

- (a) Conduct relief in place with MALAWICOY in Sector 3B;
- (b) On order, redeploy to conform with amended boundary at Annex B;
- (c) Provide armed escorts as required;
- (d) Establish safe haven areas for displaced persons and secure these camps by static guards /mobile patrolling;

- (e) Conduct protective operations:
  - (1) Road block;
  - (2) Check point (static and random);
  - (3) Vital point protection;
  - (4) Observation posts;
  - (5) Cordon and search; and
  - (6) Patrol, etc.
- (f) Control the main axis in Sector 3B;
- (g) Provide security in large towns;
- (h) Protect airfield/ strips(s) within boundary;
- (i) Deny insurgent activities;
- (j) Detain /arrest any suspected individual/ groups and hand them over in accordance with Reference E;
- (k) Guard UN installations in own area;
- (l) Identify and list all the refugee/displaced persons' camp in the area of responsibility;
- (m) Assist the NGOs in the movement and distribution of food, water and medical support;
- (n) Carry out recce and identify the food and water distribution points at commune level;
- (o) Be prepared to provide transport for the repatriation of refugees and displaced persons;
- (p) Motivate the displaced persons to return to their homes;
- (q) Coordinate with the RPA regarding the safety of the people;
- (r) Assist relief committees in preparation of list of the affected families;
- (s) Assist the affected people in returning to and settling down at their respective homes;
- (t) Assist in the distribution of house building material and farming tools;



(u) Assist in the coordination of all activities of the NGOs; and

(v) On order, handover all activities to the Government and NGOs progressively as the situation becomes normal.

(2) Phase 2. Withdraw on order.

16. ZAMBATT (Motorized)

a. Grouping. As per UN Table of Organization and Equipment (approx strength 800 personnel.) OPCON MILOB and CIVPOL.

b. Tasks. Tasks are as follows:

(1) Phase 1

(a) Conduct relief in place with GHANBATT in Sector 4A and the CHAD company (FRAFBATT) in Sector 4B;

(b) Provide armed escorts as required;

(c) Establish safe haven areas for displaced persons and secure these camps by static guards /mobile patrolling;

(d) Conduct protective operations:

(1) Road block;

(2) Check point (static and random);

(3) Vital point protection;

(4) Observation posts;

(5) Cordon and search; and

(6) Patrol, etc.

(e) Monitor border crossing by refugees and armed individual/groups in own area of responsibility;

(f) Control the main axis in Sector 4A;

(g) Provide security in large towns;

(h) Deny insurgent activities;

(i) Detain /arrest any suspected individual/groups and hand them over in accordance with Reference E;

- (j) Guard UN installations in own area;
- (k) Identify and list all the refugee/displaced persons' camp in the area of responsibility;
- (l) Assist the NGOs in the movement and distribution of food, water and medical support;
- (m) Carry out recce and identify the food and water distribution points at commune level;
- (n) Be prepared to provide transport for the repatriation of refugees and displaced persons;
- (o) Motivate the displaced persons to return to their homes;
- (p) Coordinate with the RPA regarding the security of the people;
- (q) Assist relief committees in preparation of list of the affected families;
- (r) Assist the affected people in returning to and settling down at their respective homes;
- (s) Assist in distributing of the house building material and farming tools;
- (t) Assist in the coordination of all the activities of the NGOs; and
- (u) On order, handover all activities to the Government and NGOs progressively as the situation becomes normal.

(2) Phase 2. Withdraw on order.

17. FRAFBATT

a. Grouping. As per UN Table of Organization and Equipment (strength 496 personnel.) OPCON MILOB and CIVPOL

b. Tasks.

(1) Phase 1.

- (a) Conduct operations in Sector 4B.
- (b) CHAD company to conduct relief in place with ZAMBATT in southern area of Sector 4B.
- (c) On order, redeploy to conform with the amended 4B boundary at Annex B;

- (d) Provide armed escorts as required;
- (e) Establish safe haven areas for displaced persons and secure these camps by static guards /mobile patrolling;
- (f) Conduct protective operations:
  - (1) Road block;
  - (2) Check point (static and random);
  - (3) Vital point protection;
  - (4) Observation posts;
  - (5) Cordon and search; and
  - (6) Patrol, etc.
- (g) Monitor border crossing by refugees and armed individual/groups in own area of responsibility;
- (h) Control the main axis in Sector 4B;
- (i) Provide security in large towns;
- (j) Protect airfield/ strips(s) within boundary;
- (k) Deny insurgent activities;
- (l) Detain /arrest any suspected individual/groups and hand them over in accordance with Reference E;
- (m) Guard UN installations in own area;
- (n) Identify and list all the refugee/displaced persons' camp in the area of responsibility;
- (o) Assist the NGOs in distributing food, water and medical support;
- (p) Carry out recce and identify the food and water distribution points at commune level;
- (q) Be prepared to provide transport for the repatriation of refugees and displaced persons;
- (r) Motivate the displaced persons to return to their homes;
- (s) Coordinate with the RPA regarding the safety of the people;

(t) Assist relief committees in preparation of list of the affected families;

(u) Assist the affected people in returning to and settling down at their respective homes;

(v) Assist in the distribution of house building material and farming tools;

(w) Assist in the coordination of all activities of the NGOs; and

(x) On order, handover all activities to the Government and NGOs progressively as the situation becomes normal.

(2) Phase 2. Withdraw on order.

18. ETHIOBATT (Mechanized)

a. Grouping. As per UN Table of Organisation and Equipment (strength 800 personnel). OPCON MILOB and CIVPOL.

b. Tasks.

(1) Phase 1.

(a) Conduct operations in Sector 4C;

(b) Provide armed escorts as required;

(c) Establish safe haven areas for displaced persons and secure these camps by static guards /mobile patrolling;

(d) Conduct protective operations:

(1) Road block;

(2) Check point (static and random);

(3) Vital point protection;

(4) Observation posts;

(5) Cordon and search; and

(6) Patrol, etc.

(e) Monitor border crossing by refugees and armed individual/groups in own area of responsibility;

(f) Control the main axis in Sector 4C;

- (g) Provide security in large towns;
- (h) Protect airfield/ strips(s) within boundary;
- (i) Deny insurgent activities;
- (j) Detain /arrest any suspected individual/ groups and hand them over in accordance with Reference E;
- (k) Guard UN installations in own area;
- (l) Identify and list all the refugee/displaced persons' camp in the area of responsibility;
- (m) Assist the NGOs in distributing food, water and medical support;
- (n) Carry out recce and identify the food and water distribution points at commune level;
- (o) Be prepared to provide transport for the repatriation of refugees and displaced persons;
- (p) Motivate the displaced persons to return to their homes;
- (q) Coordinate with the RPA regarding the security of the people;
- (r) Assist relief committees in preparation of list of the affected families;
- (s) Assist the affected people in returning to and settling down at their respective homes;
- (t) Assist in the distribution of house building material and farming tools;
- (u) Assist in the coordination of all activities of the NGOs; and
- (v) On order, handover all activities to the Government and NGOs progressively as the situation becomes normal.

(2) Phase 2. Withdraw on order.

19. TUNBATT (Mechanized)

- a. Grouping. As per UN Table of Organization and Equipment (approx strength 800 personnel). OPCON MILOB and CIVPOL.

b. Tasks.

(1) Phase 1.

- (a) Occupy and conduct operations in Sector 5;
- (b) On order, redeploy to conform with amended Sector 5 boundary at Annex B;
- (c) Provide armed escorts as required;
- (d) Establish safe haven areas for displaced persons and secure these camps by static guards /mobile patrolling;
- (e) Conduct protective operations:
  - (1) Road block;
  - (2) Check point (static and random);
  - (3) Vital point protection;
  - (4) Observation posts;
  - (5) Cordon and search; and
  - (6) Patrol, etc.
- (f) Monitor border crossing by refugees and armed individual/groups in own area of responsibility;
- (g) Control the main axis in Sector 5;
- (h) Provide security in large towns;
- (i) Protect airfield/ strips(s) within boundary;
- (j) Deny insurgent activities;
- (k) Detain /arrest any suspected individual/ groups and hand them over in accordance with Reference E;
- (l) Guard UN installations in own area;
- (m) Identify and list all the refugee/displaced persons' camp in the area of responsibility;
- (n) Assist the NGOs in distributing food, water and medical support;
- (o) Carry out recce and identify the food and water distribution points at commune level;

5-  
(p) Be prepared to provide transport for the repatriation of refugees and displaced persons;

(q) Motivate the displaced persons to return to their homes;

(r) Coordinate with the RPA regarding the security of the people;

(s) Assist relief committees in preparation of list of the affected families;

(t) Assist the affected people in returning to and settling down to their respective homes;

(u) Assist in the distribution of house building material and farming tools;

(v) Assist in the coordination of all activities of the NGOs; and

(w) On order, handover all activities to the Government and NGOs progressively as the situation becomes normal.

(2) Phase 2. Withdraw on order.

20. INDBATT

a. Grouping. Two infantry companies, composite engineer company, movement control platoon. (approx strength 800 personnel)

b. Tasks

(1) Phase 1.

(a) Deploy to and conduct operations in Sector 6;

(b) Provide armed escorts as required;

(c) Establish safe haven areas for displaced persons and secure these camps by static guards /mobile patrolling;

(d) Conduct protective operations:

(1) Road block;

(2) Check point (static and random);

(3) Vital point protection;

(4) Observation posts;

- 5
- (5) Cordon and search; and
  - (6) Patrol, etc.
  - (e) Control the main axis in Sector 6;
  - (f) Protect airfield/ strips(s) within boundary;
  - (g) Deny insurgent activities;
  - (h) Detain /arrest any suspected individual/ groups and hand them over in accordance with Reference E;
  - (i) Guard UN installations in own area;
  - (j) Maintain platoon size ready reaction force;
  - (k) Be prepared to deploy security forces in accordance with UNAMIR instructions for security of UN and NGO installations in KIGALI CITY (to be issued);
  - (l) Provide engr sp to UNAMIR principally through the maint of routes, repair of bridges and the provision of water pts;
  - (m) Provide engr advice to HQ UNAMIR;
  - (n) Assist in the restoration of essential svcs and facilities as dir by HQ UNAMIR;
  - (o) Be prepared to clear mines, unexploded ordinance and booby traps where appropriate and where resources will allow;
  - (p) Assist the NGOs in distributing food, water and medical support;
  - (q) Be prepared to provide transport for the repatriation of refugees and displaced persons;
  - (r) Motivate the displaced persons to return to their homes;
  - (s) Coordinate with the RPA regarding the security of the people;
  - (t) Assist relief committees in preparation of list of the affected families;
  - (u) Assist the affected people in returning to and settling down at their respective homes;
  - (v) Assist in the distribution of house building material and farming tools;



5

(w) Assist in the coordination of all activities of the NGOs; and

(x) On order, handover all activities to the Government and NGOs progressively as the situation becomes normal.

(2) Phase 2. Withdraw on order.

21. CANADIAN CONTINGENT (FORCE COMM SON)

a. Grouping. Signal squadron, medical platoon, an engr platoon with water purification detachment, a defence and security platoon, air traffic control detachment, a services support squadron and a national support element.

b. Tasks

- (1) Provide Force communications throughout the AO.
- (2) Establish level two medical facility at Amahoro Stadium.
- (3) Provide medical support to refugees/displaced persons.
- (4) Encourage refugees to return to their home areas.
- (5) Assist NGOs where possible with the distribution of food and water to refugees/displaced persons.
- (6) Assist UNAMIR in transporting refugees and displaced persons to their home areas when possible.
- (7) Assist UNAMIR in the management of stores and equipment.
- (8) Be prepared to augment GHANBATT/INDBATT security force in accordance with UNAMIR instructions on security of UN and NGO installations in Sector 6.
- (9) Be prepared to provide one AME team on rotational basis as determined by FMO.

22. AUSTRALIAN CONTINGENT (MEDICAL SUPPORT FORCE)

a. Grouping. Force medical staff and medical support company, level two and three medical facilities and defence and security company.

b. Tasks.

- (1) Provide medical support to UNAMIR forces in accordance with the Force Medical Support Plan.

- (2) Maintain a level three medical facility with:
- (a) initial wound surgical capability;
  - (b) specialist support elements; and
  - (c) at least 35 beds.
- (3) Be prepared to deploy a treatment section of up to two casualty collecting posts (CCP) as required.
- (4) Be prepared to deploy a dental section and preventative medicine section as required.
- (5) Provide a road evacuation service as directed.
- (6) Be prepared to provide up to two AME teams.
- (7) Provide health advice to the FMO.
- (8) Provide medical support to refugees/displaced persons within spare capacity.
- (9) Assist NGOs, where possible, with distribution of food, medical supplies and water to refugees/displaced persons.
- (10) Be prepared to augment GHANBATT/INDBATT security force in accordance with UNAMIR instructions on security of UN and NGO installations in Sector 6.

23. BRITISH CONTINGENT (OP GABRIEL)

- a. Grouping. Engineer squadron, Log Sp squadron, Fd Amb and Maint coy.
- b. Tasks.
  - (1) Provide engr sp to UNAMIR principally through the maint of routes, repair of bridges and the provision of water pts.
  - (2) Provide engr advice to HQ UNAMIR.
  - (3) Assist in the restoration of essential svcs and facilities as dir by HQ UNAMIR.
  - (4) Be prepared to clear mines, unexploded ordnance and booby traps for other UNAMIR contingents where appropriate and where resources will allow.
  - (5) Provide level two and three med spt to refugees/displaced persons as dir by HQ UNAMIR.
  - (6) Be prepare to provide surgical spt to UNAMIR as dir by HQ UNAMIR.

(7) In conjunction with BROWN and ROOT, provide 2nd line repair and recovery sp to UNAMIR contingent vehs and eqpt within deployed capabilities.

(8) Provide maint advice to HQ UNAMIR as required.

(9) Provide bulk fuel sups to UNAMIR as dir by HQ UNAMIR and limited distr of fuel to UNAMIR units within KIGALI.

(10) Assist NGOs with distribution of food, water and other humanitarian sups to refugees/displaced persons.

(11) Assist in tpt of refugees and displaced persons to their home areas where possible.

(12) Provide a focus for tasking of UNAMIR tpt assets and assist with coord of log sp to force as dir.

24. HAC

a. Tasks.

(1) Brief the FC on humanitarian assistance operations in RWANDA.

(2) Provide advice to the Plans Cell of UNAMIR concerning UNAMIR operations in support of humanitarian assistance.

(3) Assist UNREO/UNDP in coordinating the activities of UN and NGO agencies operating in RWANDA.

(4) Conduct humanitarian relief assessment recce throughout sectors as required.

(5) Arrange for the security aspects of humanitarian organizations conducting relief operations in RWANDA in close liaison with UNAMIR Ops Branch.

(6) Collate data from sectors pertaining to humanitarian matters.

(7) Maintain current data on displaced persons and refugees.

(8) Disseminate information concerning human rights abuses to UN human rights rapporteurs.

(9) arrange for the necessary administration for the handover of PWs to the Rwandan authorities to include the presence of ICRC officials.

(10) Effect close liaison with UN and NGO agencies.

5

(11) Effect close liaison as required with humanitarian representatives of the Rwandan Government.

(12) Assist where possible in locating missing Rwandans and foreign nationals.

25. TAC HQ

a. Grouping. Operations element, logistics element, communications element, liaison element (HAC and RPA) and movement control element (as required).

b. Tasks.

(1) Effect command and control of refugee/displaced persons relocation operations in Sectors 3 and 4.

(2) Be prepared to control and coordinate specified operations on order.

(3) Maintain liaison with RPA HQ in Sector 3.

26. Coordinating Instructions

a. Boundaries - Annex A - troop deployment with effect 5 Oct 94, Annex B - troop deployment with amended Sector 4B (to be effected on order).

b. Humanitarian control measures - Annex C.

c. Routes - Annex D.

d. ROE - Refs C and D.

(1) Weapon Readiness Status - State Green all sectors.

e. Information Collection Requirements. The Force Commander's Primary Information Requirements (PIR) will be distributed weekly or more frequently if required.

f. Timings - Matrix depicting future deployment schedule is shown at Annex F.

ADMINISTRATION AND LOGISTICS

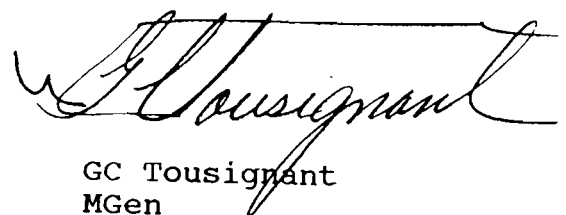
27. See ADMINORD No 19 dated 5 Oct 94.

a. Medical. See ADMINORD No. 19 dated 5 Oct 94.

COMMAND AND SIGNALS

28. Control. See Annex E. MILOB HQ and CIVPOL HQ are to effect liaison, coordination and administrative control through discrete channels. OP PASSAGE (CDN) and OP GABRIEL (UK), although under national control vice UNAMIR are to operate in close cooperation and in support of the UNAMIR humanitarian effort. Sector HQ are to report to the Force HQ indicated below:

- a. All sectors - HQ Main; and
  - b. Sectors 3 and 4 - HQ TAC for Humanitarian operations.
  - c. Location of Headquarters.
    - (1) UNAMIR Force HQ - KIGALI.
    - (2) UNAMIR Force HQ (TAC) - BUTARE.
    - (3) Sector 1 - BYUMBA.
    - (4) Sector 2 - KIBUNGO.
    - (5) Sector 3A - BUTARE.
    - (6) Sector 3B - GITARAMA.
    - (6) Sector 4A - GIKONGORO.
    - (7) Sector 4B - KIBUYE.
    - (8) Sector 4C - CYANGUGU.
    - (9) Sector 5 - MURARE.
    - (10) Sector 6 - KIGALI CITY.
  - d. Frequencies and Callsigns. See CEOI 04/94 Dated 26 Sep 94.
29. Reference A is cancelled.
30. Acknowledge.



GC Tousignant  
MGen  
Force Commander

Annexes:

Annex A. Boundaries  
Annex B. Amended Boundary (Sector 4B)  
Annex C. Humanitarian Control Measures  
Annex D. Routes  
Annex E. Command and Control Network  
Annex F. Future Deployment Schedule

Distribution List:

External:

<u>Action:</u>	<u>Copy No</u>
Canadian Contingent	1
AUSMED	2
BRIT CON	3
MILOB Gp HQ	4-11
NICOY	12
MALICOY	13
GHANBATT	14
MALAWI COY	15
ZAMBATT	16
FRAFBATT	17
ETHIOBATT	18
TUNBATT	19
INDBATT	20
UNCIVPOL	21

Information:

UNDPKO ( Mission Planning Service )	22
-------------------------------------	----

Internal:

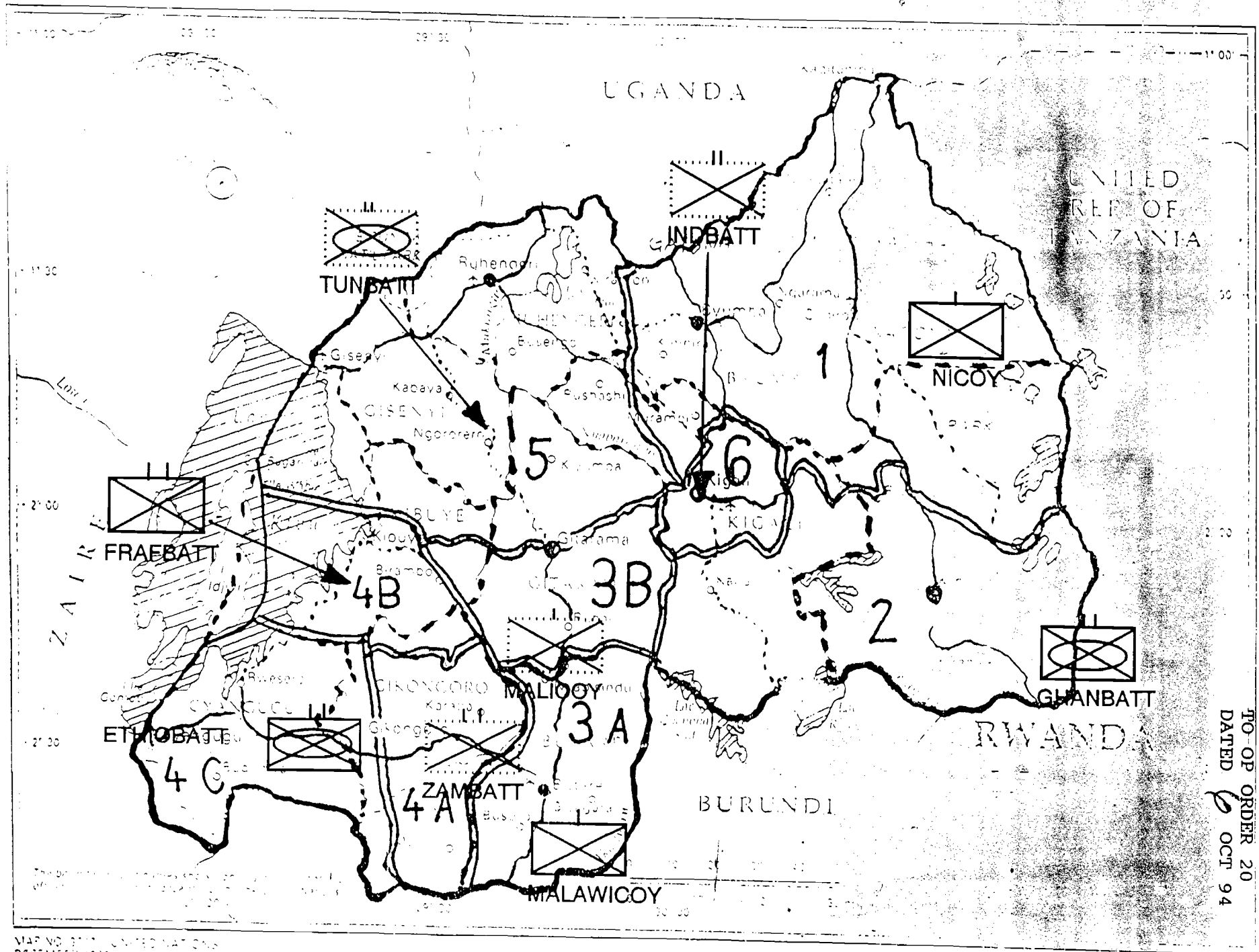
Action:

MA to FC	23
DFC/COS	24
DCOS OPS	25
DCOS SP	26
G1/CMPO	27
G2	28
G3	29
G3 Plans	30
G4	31
G5/CAO	32
G6/FSO	33
MOVCON	34
HAC	35
Camp Comdt	36
FMO	37

Information:

SMSG's Office  
CC LOG O  
File  
Spare

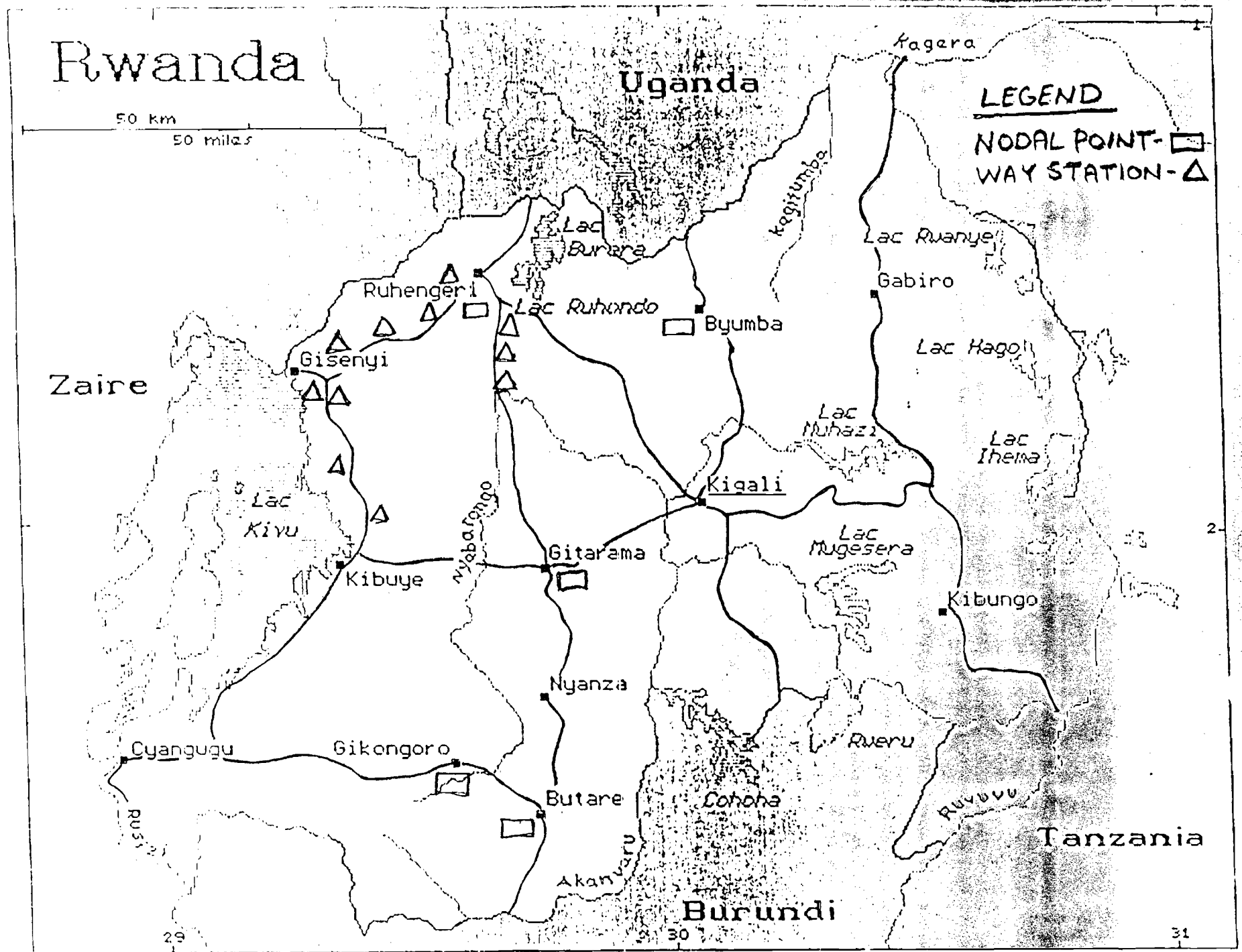
38  
39  
40  
41-50



ANNEX A  
FO-OP ORDER 20  
DATED 10 OCT 94



ANNEX C TO  
OP ORDER 20  
DATED 6 OCT 94



ANNEX F TO

# CONTINGENT DEPLOYMENT PLANNING SCHEDULE

OP ORDER 20

DATED 6 OCT 94

SEPTEMBER

DATE	1	2	3	4	5	6	7	8	9	10	11	12	13	14	15	16	17	18	19	20
INDBATT	R	R	R	R																
MALICOY																				
MALAWICOY										DC										
NICOY	R&A	R	R	R	R		A	A	A											
TUNBATT	A	A																		
ZAMBATT		A	A	A	A															
DATE	1	2	3	4	5	6	7	8	9	10	11	12	13	14	15	16	17	18	19	20

RECCE - (R)

ADVANCE PARTY - (A)

MAINBODY - (M)

DEPLOYMENT COMPLETED - (DC)

READY TO MOVE - (RTM)

EQUIPMENT - (E)

ANNEX F TO

OP ORDER 20

DATED 6 OCT 94

OCTOBER

21	22	23	24	25	26	27	28	29	30	1	2	3	4	5	6	7	8	9	10	11	12
														R	R	R					
		RT					M	M													
															M	M&E	E	E	E	M&DC	
21	22	23	24	25	26	27	28	29	30	1	2	3	4	5	6	7	8	9	10	11	12

RECCE - (R)

ADVANCE PARTY - (A)

MAINBODY - (M)

DEPLOYMENT COMPLETED - (DC)

READY TO MOVE - (RTM)

EQUIPMENT - (E)

93

①  
② Copy to COS  
place on file. *[Signature]*  
63

HQ UNAMIR  
KIGALI

4 Sep 94

OPERATION ORDER No 19

Reference: A. UNAMIR OPORD 18 dated 31 Aug 94

Time zone used throughout this order: BRAVO

Situation

1. General Phase 1 of current operations is developing according to plan. The situation in Sector 4 is now sufficiently stable to commence Phase 2.

2. Political The political process must be accelerated in order to develop a national will for reintegration. In order for the RENP to succeed, a secure and stable environment must exist so that outside agencies and governments feel confident enough to invest funds and resources to assist the BBGNU to rebuild Rwanda. Accordingly, UNAMIR must create an atmosphere of law and order while gradually introducing BBGNU government officials and RPA elements without causing unrest or undue concern among the Rwandan population in Sector 4.

3. Threat There are reports of as many as ten (10) thousand RGF members located in ZAIRE opposite CYANGUGU. These soldiers are believed to have crossed with 50% of their personal weapons. The possibility of having heavy weapons can not be disregarded. About two thirds of these soldiers were recruited and trained during the civil war and are believed to be poorly trained.

4. There are strong rumours that these soldiers are being trained by the ZAIRIAN army. None of these reports/rumours have been confirmed.

5. During the past week, there have been reports of RGF members being seen entering Rwanda in small groups. Some have been seen crossing the border in civilian clothes. They have been using the normal roads either by vehicles or on foot. There are also increased reports on RGF banditry and murders in the sector. Some of the RGF members have surrendered themselves and some have surrendered weapons, grenades and vehicles. There are also reports on RGF members blocking refugees returning to Rwanda.

6. Assessment The possibility of the RGF mounting a large scale formed attack in Sector 4 in the next thirty days or so is very minimal. The likelihood of insurgent activity on a small scale (ie section/ platoon attack or raids) will grow. They may only be able to mount a large scale attack when they re-organize which may take some time. The possibility of RGF establishing caches (especially in the forests) can not be ruled out either.

7. The chances of direct attacks on UNAMIR forces in Sector 4

are significantly higher than in other sectors. However, should relations be established between Zaire and the BBGNU, the RGF will further be isolated, thus decreasing its capabilities.

8. RPA Capability Approximately five-plus brigades. Many soldiers are newly recruited and trained. Careful selection must be stressed for sensitive tasks inside Sector 4 if insertion is contemplated especially in the early phases.

9. UNAMIR Forces Currently three battalions, one independent company and support elements are deployed. Within the next week, a further battalion and a company group will be deployed along with the advance party of an additional battalion.

#### Mission

10. UNAMIR is to monitor, control and facilitate the reintegration of the BBGNU and the RPA of RWANDA into Sector 4.

#### Execution

11. General Outline Reintegration will be effected, initially, with the installation of Prefects in Sectors 4A, 4B and 4C at GIKONGORO, KIBUYE AND CYANGUGU, respectively. Each Prefect will be escorted by a platoon size RPA security element. A gradual increase to RPA presence in the sector in the immediate future can be anticipated. Within the framework of the current operation, UNAMIR will conduct 'normal', yet vigilant, operations with particular emphasis on manning check points, patrolling and the security of vital points.

#### 12. Grouping and Tasks.

a. Grouping No change.

##### b. Tasks

###### (1) MILOB

(a) Provide escort teams for Prefect insertion and subsequent movement within the Prefecture;

(b) Provide continuous liaison with the RPA and the Prefect;

(c) Provide escort for RPA resupply on order.

###### (2) CIVPOL

(a) Coordinate the dispatch of BBGNU Police Administrators to each of the Sector 4 Prefectures with a CIVPOL monitor to observe and report;

(b) Supervise the screening of Communal Police and the issue of credentials;

(c) Develop an abbreviated training plan to induct Community Police;

(d) Observe and monitor the recruitment, screening and training of ex-RGF Gendarmes.

(3) CHANBATT

(a) Man check points along PINK route within boundaries;

(b) Identify location of Prefect's final destination and establish outer security cordon to complement RPA security;

(c) Complement RPA security as the Prefect moves throughout the Prefecture.

(d) Assist in the legitimization process of the Communal Police.

(4) FRAFBATT

(a) Man check points along RED route within boundaries;

(b) Identify location of Prefect's final destination and establish outer security cordon to complement RPA security;

(c) Complement RPA security as the Prefect moves throughout the Prefecture.

(d) Assist in the legitimization process of the Communal Police.

(5) ETHIOBATT

(a) Man check points along PINK route within boundaries;

(b) Identify location of Prefect's final destination and establish outer security cordon to complement RPA security;

(c) Complement RPA security as the Prefect moves throughout the Prefecture.

(d) Continue disarmament and reintegration of FCF installed Gendarmerie.

(e) Assist in the legitimization process of the Communal Police.

(6) UNAMIR TAC HQ

(a) Provide radio relay as required.

(b) Monitor and record all transmissions.

### 13. Coordinating Instructions

#### a. Timings

- (1) D Day - 6 Sep
- (2) Recce complete 051400 Sep 94
- (3) Man check points and vital points by 051800 Sep 94
- (4) MILOBS to man RV by 051800 Sep 94

b. Routes See Annex C to Reference A.

#### c. RV Points

- (1) Sector 4A - vic GR596224
- (2) Sector 4B - vic GR440721
- (3) Sector 4C - vic GR368218

### Administration and Logistics

14. RPA to be self sufficient. Sector Commanders to be prepared to provide emergency logistic support on order by UNAMIR HQ.

15. Medical AUSMED CCP to remain at BUTARE.

### Command and Signals

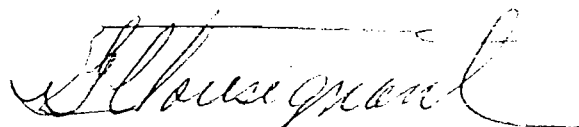
16. Control of Sector 4 to revert to UNAMIR HQ (Main) with effect 051800 Sep 94.

#### 17. Nicknames

HIGH TIME	Escort commenced	Issued by MILOB
BROKEN ARROW	Escort complete	Issued by MILOB

### Acknowledge Instruction

ACK



G.C. Tousignant  
MGEN  
Force Commander

### DISTRIBUTION LIST

#### Action

Tac HQ  
MILOB HQ  
CIVPOL  
GHANBATT  
FRAFBATT  
ETHIOBATT

#### Information

AUSMED  
ERITCON  
CANSIGS

Copy #1 - Cos

*[Handwritten signature]*

Copy No 35 of 35

3000.1- (Ops)

UNAMIR  
Force HQ  
KIGALI, RWANDA

31 Aug 1994

Distribution List

Subject: OPERATION ORDER NO. 18

References: A. Operation Order No 16 dated 28 Jul 94  
B. Modification No 1 to Op Order No 16 dated 6 Aug 94  
C. Operation Directive No 17 dated 8 Aug 94

SITUATION

1. a. UNAMIR. Changes in the military, political and humanitarian situation caused UNAMIR to alter its working procedure. Under the expanded mandate of the Security Council, UNAMIR has deployed forces and support capabilities in RWANDA with an aim to contribute largely in the military, political and humanitarian fields. Ghana, UK, Australia, Ethiopia, Nigeria, Canada, Tunisia, Zambia, Malawi, Chad, Senegal, Congo, Mauritania, Niger and USA have contributed forces. Forces of the USA do not come directly under UNAMIR but are in direct support for humanitarian assistance.
- b. Political. The political situation remains calm. The newly formed Broad Based Government of National Unity (BBGNU) of RWANDA has started functioning. USA has reopened its embassy in RWANDA and other countries are also planning to re-establish their embassies in RWANDA. Beside this, a number of high level teams from different countries are visiting RWANDA to engage in talks with the present Government.
- c. Military. The military situation remains calm, yet apprehensive. The relief in place with French Coalition Forces (FCF) in Sector 4 (formerly the HP2) was completed with effect 211130B Aug 94. MILOB teams have deployed to all sectors. Deployments are shown at Annex A.
- d. Humanitarian. The Force continues to coordinate humanitarian activities with other humanitarian aid agencies and the return of displaced people to their homes. WFP and other aid agencies continue to deliver food and other aid items to displaced people. In the South West, fears amongst locals continue after the FCF withdrawal. The following activities continue:



(1) Stabilization of the refugees/displaced persons in the present locations by provision of food, water, medical support and basic public health measures with an emphasis in Sector 4. Limited services in Sector 4 had created a situation of despair and a resultant significant movement of people west to BUKAVU. Planning for home area preparation and repatriation of refugees/displaced persons has commenced. KIGALI International Airport is now open for 24/7 operations and essential services in KIGALI are being improved.

(2) KIGALI is the centre of gravity of the humanitarian relief and sustainment effort/programme for RWANDA. From the NODAL POINTS, materials are brought to the Distribution Points under the arrangement of UNAMIR. UNAMIR, along with NGOs and local authorities, distribute food and other items to the affected people. There are a number of distribution points in each affected prefecture. NODAL POINTS have been established in RUHENGARI, BYUMBA, GITARAMA, BUTARE and GIKONGORO. In these NODAL POINTS, trucks, food, assistance supplies (like soap), clean water, medical supplies and facilities have been stockpiled. Personnel, experts, material handling, transport and security are all in evidence in order to ensure that onward distribution, and/or more extensive care/treatment, is provided to the various WAY STATIONS between these nodes and to the outlying areas. The WAY STATIONS have been established every 20 Kms or so along the major corridor of GISENYI-RUHENGARI. This principal corridor leading to KIGALI has been established in order to relieve the pressure on GOMA. A pseudo-quarantine radius from the ZAIRE border is in effect (40 Kms) to screen cholera victims before they move beyond RUHENGARI to KIGALI. NGOs are assisting to establish the WAY STATIONS. Concurrently, transport of seriously ill and other displaced persons from sector 4A and sector 4B through GITARAMA to eastern and western prefectures is being pursued. A second priority is the BURUNDI-BUTARE-GITARAMA-KIGALI corridor. The third priority is the TANZANIA-RUSUMO-KIBANGO-RWAMAGANA-KIGALI corridor. The Humanitarian Affairs Cell (HAC) of UNAMIR, with direct support from the US civilian/humanitarian element, is coordinating all military support in the corridor so that there is no duplication. The last priority is the BYUMBA-KIGALI corridor.

(3) When the flow of refugees returning to their home areas increases, the emphasis will switch from route feeding and support to take-home WAY STATION centres located on the secondary axes. The location of NODAL POINTS and WAY STATIONS is shown at Annex B.

## MISSION

2. UNAMIR is to provide security, and to assist and coordinate the humanitarian support of participating countries/organizations to facilitate a rapid and effective end to the crisis in RWANDA.

## EXECUTION

### 3. General Outline

a. The thrust of the effort remains one of security to create the necessary conditions to bring back the refugees and displaced persons and resettle them in their respective home areas. About one million refugees are presently staying in GOMA and two million refugees are waiting to return home from Sector 4. Confidence building activities among the population in ensuring their security, extensive assistance in carrying out humanitarian tasks by different countries/agencies, monitoring cease-fire, assisting the BBGNU to participate in establishing the relief capability in RWANDA and in re-settling displaced persons/refugees is of paramount importance.

b. A strong, resolute UN presence will be provided in all sectors to ensure adequate security. The emphasis will be placed on patrolling, surveillance, escort duties and protective operations (cordon and search road blocks, etc). High mobility and the flexibility to rapidly concentrate forces must be retained throughout the operation. Protected sites are to be established at locations where Rwandans are in need of security. The operation will be continued in 2 phases:

(1) Phase 1. It is expected that most of the refugees/displaced persons will be well on their way to their home areas by the beginning of phase 1. They have to be supported logistically until the next harvest of crops expected by December/January if the planting is to take place in September/October as RWANDA is an agriculturally based country. Food, clean water, medical facilities, road and bridge reconstruction, home building material, farming tools, etc will have to be provided and/or stockpiled in the NODAL POINTS for onward distribution and/or production. Operations will be conducted to ensure that these activities are free from interference by subversive and criminal interference. Deployment is shown at Annex A.

(2) Phase 2. As conditions in RWANDA stabilize and the BBGNU gains control of the situation, the BBGNU, with NGOs, must be capable of providing sufficient assistance without direct UNAMIR and other nation support. A progressive handover of all activities to the Government and NGOs will be done in accordance with a normalisation process. This phase will be accomplished when the majority of the refugees/displaced persons have returned to their homes and the routine life sequence is re-established. While the provision of security will be maintained, some troop redeployment may be necessary to effect handing over responsibilities of Sector 4 to the Rwandan Government. Withdrawal of Infantry Bns in Sector 4, except for one Motorized Bn (yet to be determined), which will deploy throughout Sector 4, will take place.

4. Groupings and Tasks. Operation Support Hope (US), Operation Passage (Canada), and Operation Gabriel (UK) have deployed in coordination with UNAMIR.

5. MILOB GP

a. Grouping.

(1) MILOBs and CIVPOL;

(2) OPCON. Independent company in Sector 1 (when allocated) and MALAWI company in Sector 3.

(3) In loc. Support elements as required.

b. Tasks.

(1) Phase 1.

(a) Continue deployment of UNMO to all Sectors.

(b) Establish safe haven areas for displaced persons.

(c) Participate in security operations with local authorities such as Communal Police and Gendarmerie (CIVPOL only).

(d) Monitor border crossing by refugees and armed individual/groups in own area of responsibility.

(e) Provide security in refugee/displaced persons' camps in conjunction with co-located troops.

(f) Ensure that RGF troops are not present.

- (g) Provide escorts as required.
- (h) Identify and list all the refugee/displaced persons' camp in the area of responsibility.
- (i) Assist the NGOs and the US Forces in distributing food, water and medical support.
- (j) Carry out recce and identify the food distribution points at commune level.
- (k) Organise all available resources to move the refugees/displaced persons.
- (l) Be prepared to coordinate transport for the repatriation of refugees and displaced persons.
- (m) Motivate the displaced persons to return to their homes.
- (n) Coordinate with the RPA regarding the safety of the people.
- (o) Assist relief committees in preparation of list of the affected families.
- (p) Assist the affected people in settling down to their respective homes.
- (q) Assess the requirement of the affected people for settling down specially in farming sector and forward the same to HAC.
- (r) Assist in distributing of the house building material and farming tools.
- (s) Assist in the coordination of all activities of the NGOs.

(2) Phase 2. Handover all activities to the Government and NGOs progressively as the situation normalizes.

6. GHANBATT (Mechanized).

a. Grouping.

~~(1) As per UN Table of Organization and Equipment (strength of 820 personnel and 50 APCs). OPCON MILOB and CIVPOL.~~

b. Tasks. Tasks are as follows:

(1) Phase I.

(a) Conduct relief in place with ZAMBATT in Sector 4A.

(b) Occupy and conduct operations in Sector 2.

(c) Provide armed escorts as required.

(d) Establish safe haven areas for displaced persons and secure these camps by static guards /mobile patrolling.

(e) Participate in security operations with local authorities such as Communal Police and Gendarmerie.

(f) Undertake, control measures (road blocks, cordon and search, etc) in conjunction with local authorities.

(g) Monitor border crossing by refugees and armed individual/groups in own area of responsibility.

(h) Control the main axis in Sector 2.

(i) Provide security in large towns and in refugee/displaced persons' camps.

(j) Protect KIA Airfield and other airfield/strips(s) in own area.

(k) Ensure that RGF troops are not present.

(l) Detain /arrest any suspected individual/groups and hand them over to local authority.

(m) Guard UN installations in own area.

(n) Identify and list all the refugee/displaced persons' camp in the area of responsibility.

(o) Assist the NGOs in distributing food, water and medical support.

(p) Assist the local authority in maintaining the law and order situation in the camps.

(q) Carry out recce and establish water points in coordination with the NGOs and local authorities at commune level.

(r) Carry out recce and identify the food distribution points at commune level.

(s) Organise all available resources to move the refugees/displaced persons.

(t) Be prepared to provide transport for the repatriation of refugees and displaced persons.

(u) Motivate the displaced persons to return to their homes.

(v) Coordinate with the RPA regarding the safety of the people.

(w) Assist relief committees in preparation of list of the affected families.

(x) Assist the affected people in settling down to their respective homes.

(y) Assess the requirement of the affected people for settling down specially in farming sector and forward the same to HAC.

(z) Assist in the distribution of house building material and farming tools.

(aa) Assist in the coordination of all activities of the NGOs.

(ab) Be prepared to conduct up to company level reinforcement operations in Sector 1 on order.

(2) Phase 2. Handover all activities to the Government and NGOs progressively as the situation becomes normal.

7. MALAWICOY (Motorized)

a. Grouping. As per UN Table of Organization and Equipment (strength 167 personnel). Company is allocated under OPCON of MILOB Sector Comd.

b. Tasks

(1) Phase I

(a) Occupy and conduct operations in Sector 3.

(b) Provide armed escorts as required.

(c) Establish safe haven areas for displaced persons and secure these camps by static guards /mobile patrolling.

(d) Participate in security operations with local authorities such as Communal Police and Gendarmerie.

- (e) Undertake, control measures (road blocks, cordon and search, etc) in conjunction with local authorities.
- (f) Monitor border crossing by refugees and armed individual/groups in own area of responsibility.
- (g) Control the main axis in Sector 3.
- (h) Provide security in large towns and in refugee/displaced persons' camps.
- (i) Protect airfield/ strips(s) in own area.
- (j) Ensure that RGF troops are not present.
- (k) Detain /arrest any suspected individual/groups and hand them over to local authority.
- (l) Guard UN installations in own area.
- (m) Identify and list all the refugee/displaced persons' camp in the area of responsibility.
- (n) Assist the NGOs in the movement and distribution of food, water and medical support.
- (o) Assist the local authority in maintaining the law and order situation in the camps.
- (p) Carry out recce and establish water points in coordination with the NGOs and local authorities at commune level.
- (q) Carry out recce and identify the food distribution points at commune level.
- (r) Organise all available resources to move the refugees/displaced persons.
- (s) Be prepared to provide transport for the repatriation of refugees and displaced persons.
- (t) Motivate the displaced persons to return to their homes.
- (u) Coordinate with the RPA regarding the safety of the people.
- (v) Assist relief committees in preparation of list of the affected families.
- (w) Assist the affected people in settling down to their respective homes.

(x) Assess the requirement of the affected people for settling down specially in farming sector and forward the same to HAC.

(y) Assist in the distribution of house building material and farming tools.

(z) Assist in the coordination of all activities of the NGOs.

(2) Phase 2. Handover all activities to the Government and NGOs progressively as the situation becomes normal.

8. ZAMBATT (Motorized)

a. Grouping. As per UN Table of Organization and Equipment (approx strength 800 personnel.)

b. Tasks. Tasks are as follows:

(1) Phase I

(a) Conduct relief in place with GHANBATT in Sector 4A.

(b) 'Provide armed escorts as required.'

(c) Establish safe haven areas for displaced persons and secure these camps by static guards /mobile patrolling.

(d) Participate in security operations with local authorities such as Communal Police and Gendarmerie when in place.

(e) Undertake, control measures (road blocks, cordon and search, etc) in conjunction with local authorities.

(f) Monitor border crossing by refugees and armed individual/groups in own area of responsibility.

(g) Control the main axis in Sector 4A.

(h) Monitor Eastern boundary of Sector 4 in own area of responsibility.

(i) Provide security in large towns and in refugee/displaced persons' camps.

(j) Ensure that RGF troops are not present.

(k) Detain /arrest any suspected individual/groups and hand them over to local authority.



- (l) Guard UN installations in own area.
  - (m) Identify and list all the refugee/displaced persons' camp in the area of responsibility.
  - (n) Assist the NGOs in the movement and distribution of food, water and medical support.
  - (o) Assist the local authority in maintaining the law and order situation in the camps.
  - (p) Carry out recce and establish water points in coordination with the NGOs and local authorities at commune level.
  - (q) Carry out recce and identify the food distribution points at commune level.
  - (r) Organise all available resources to move the refugees/displaced persons.
  - (s) Be prepared to provide transport for the repatriation of refugees and displaced persons.
  - (t) Motivate the displaced persons to return to their homes.
  - (u) Coordinate with the RPA regarding the safety of the people.
  - (v) Assist relief committees in preparation of list of the affected families.
  - (w) Assist the affected people in settling down to their respective homes.
  - (x) Assess the requirement of the affected people for settling down specially in farming sector and forward the same to HAC.
  - (y) Assist in distributing of the house building material and farming tools.
  - (z) Assist in the coordination all the activities of the NGOs.
- (2) Phase 2. Handover all activities to the Government and NGOs progressively as the situation becomes normal.

9. **FRAFBATT**

a. **Grouping**. As per UN Table of Organization and Equipment ( approx strength 488 personnel.) OPCON MILOB and CIVPOL

- b. Deployment. Will continue to remain in Sector 4B.
- c. Tasks.

(1) Phase 1.

- (a) Conduct operations in Sector 4B.
- (b) Provide armed escorts as required.
- (c) Establish safe haven areas for displaced persons and secure these camps by static guards /mobile patrolling.
- (d) Participate in security operations with local authorities such as Communal Police and Gendarmerie.
- (e) Undertake, control measures (road blocks, cordon and search, etc) in conjunction with local authorities.
- (f) Monitor border crossing by refugees and armed individual/groups in own area of responsibility.
- (g) Control the main axis in Sector 4B.
- (h) Provide security in large towns and in refugee/displaced persons' camps.
- (i) Protect airfield/ strips(s) in own area.
- (j) Ensure that RGF troops are not present.
- (k) Detain /arrest any suspected individual/ groups and hand them over to local authority.
- (l) Guard UN installations in own area.
- (m) Identify and list all the refugee/displaced persons' camp in the area of responsibility.
- (n) Assist the NGOs and the US Forces in distributing food, water and medical support.
- (o) Assist the local authority in maintaining the law and order situation in the camps.
- (p) Carry out recce and establish water points in coordination with the NGOs and local authorities at commune level.
- (q) Carry out recce and identify the food distribution points at commune level.

(r) Organise all available resources to move the refugees/displaced persons.

(s) Be prepared to provide transport for the repatriation of refugees and displaced persons.

(t) Motivate the displaced persons to return to their homes.

(u) Coordinate with the RPA regarding the safety of the people.

(v) Assist relief committees in preparation of list of the affected families.

(w) Assist the affected people in settling down to their respective homes.

(x) Assess the requirement of the affected people for settling down specially in farming sector and forward the same to HAC.

(y) Assist in the distribution of house building material and farming tools.

(z) Assist in the coordination of all activities of the NGOs.

(2) Phase 2. Handover all activities to the Government and NGOs progressively as the situation becomes normal.

10. ETHIOBATT (Mechanized)

a. Grouping. As per UN Table of Organisation and Equipment (strength 778 personnel). OPCON MILOB and CIVPOL.

b. Tasks. Phases are as follows:

(1) Phase 1.

(a) Conduct operations in Sector 4C.

(b) Provide armed escorts as required.

(c) Establish safe haven areas for displaced persons and secure these camps by static guards /mobile patrolling.

(d) Participate in security operations with local authorities such as Communal Police and Gendarmerie.

- (e) Undertake, control measures (road blocks, cordon and search, etc) in conjunction with local authorities.
- (f) Monitor border crossing by refugees and armed individual/groups in own area of responsibility.
- (g) Control the main axis in Sector 4C.
- (h) Provide security in large towns and in refugee/displaced persons' camps.
- (i) Protect airfield/ strips(s) in own area.
- (j) Ensure that RGF troops are not present in sector.
- (k) Detain /arrest any suspected individual/groups and hand them over to local authority (once in place) or in accordance with UNAMIR instructions.
- (l) Guard UN installations in own area.
- (m) Identify and list all the refugee/displaced persons' camp in the area of responsibility.
- (n) Assist the NGOs and the US Forces in distributing food, water and medical support.
- (o) Assist the local authority in maintaining the law and order situation in the camps.
- (p) Carry out recce and establish water points in coordination with the NGOs and local authorities at commune level.
- (q) Carry out recce and identify the food distribution points at commune level.
- (r) Organise all available resources to move the refugees/displaced persons.
- (s) Be prepared to provide transport for the repatriation of refugees and displaced persons.
- (t) Motivate the displaced persons to return to their homes.
- (u) Coordinate with the RPA regarding the safety of the people.
- (v) Assist relief committees in preparation of list of the affected families.

(w) Assist the affected people in settling down to their respective homes.

(x) Assess the requirement of the affected people for settling down specially in farming sector and forward the same to HAC.

(y) Assist in the distribution of house building material and farming tools.

(z) Assist in the coordination of all activities of the NGOs.

(2) Phase 2. Handover all activities to the Government and NGOs progressively as the situation becomes normal.

11. TUNBATT (Mechanized)

a. Grouping. As per UN Table of Organization and Equipment (max strength 850 personnel). OPCON MILOB and CIVPOL.

b. Tasks. Phases are as follows:

(1) Phase 1.

(a) Deploy to and conduct operations in Sector 5.

(b) Provide armed escorts as required.

(c) Establish safe haven areas for displaced persons and secure these camps by static guards /mobile patrolling.

(d) Conduct exchange of refugees/displaced persons on order from Force HQ Humanitarian Cell.

(e) Participate in security operations with local authorities such as Communal Police and Gendarmerie.

(f) Undertake, control measures (road blocks, cordon and search, etc) in conjunction with local authorities.

(g) Monitor border crossing by refugees and armed individual/groups in own area of responsibility.

(h) Control the main axis in Sector 5.

(i) Provide security in large towns and in refugee/displaced persons' camps.

- (j) Protect airfield/ strips(s) in own area.
- (k) Ensure that RGF troops are not present in sector.
- (l) Detain /arrest any suspected individual/ groups and hand them over to local authority.
- (m) Guard UN installations in own area.
- (n) Identify and list all the refugee/displaced persons' camp in the area of responsibility.
- (o) Assist the NGOs and the US Forces in distributing food, water and medical support.
- (p) Assist the local authority in maintaining the law and order situation in the camps.
- (q) Carry out recce and establish water points in coordination with the NGOs and local authorities at commune level.
- (r) Carry out recce and identify the food distribution points at commune level.
- (s) Organise all available resources to move the refugees/displaced persons.
- (t) Be prepared to provide transport for the repatriation of refugees and displaced persons.
- (u) Motivate the displaced persons to return to their homes.
- (v) Coordinate with the RPA regarding the safety of the people.
- (w) Assist relief committees in preparation of list of the affected families.
- (x) Assist the affected people in settling down to their respective homes.
- (y) Assess the requirement of the affected people for settling down specially in farming sector and forward the same to HAC.
- (z) Assist in the distribution of house building material and farming tools.
- (aa) Assist in the coordination of all activities of the NGOs.

(2) Phase 2. Handover all activities to the Government and NGOs progressively as the situation becomes normal.

12. CANADIAN CONTINGENT (FORCE COMM SON)

a. Grouping. Signal Squadron, medical platoon, an engr platoon with water purification detachment, a defence and security platoon, air traffic control detachment, a services support squadron and a national support element.

b. Tasks

- (1) Provide Force communications throughout the AO.
- (2) Establish hospital and medical clinic facilities at deployment sites.
- (3) Provide medical support to refugees/displaced persons.
- (4) Encourage refugees to return to their home areas.
- (5) Assist NGOs where possible with the distribution of food and water to refugees/displaced persons.
- (6) Assist UNAMIR in transporting the refugees to their home areas when possible.
- (7) Assist UNAMIR in the management of stores and equipment.
- (8) Be prepared to augment GHANBATT security force in accordance with UNAMIR instructions for security of UN and NGO installations in KIGALI CITY (TBI).

13. AUSTRALIAN CONTINGENT (MEDICAL SUPPORT FORCE)

a. Grouping. Force medical staff, level three medical facility and defence and security company.

b. Tasks.

- (1) Provide medical support to UNAMIR forces in accordance with the Force Medical Support Plan.
- (2) Maintain a level three medical facility with:
  - (a) surgical capability;
  - (b) specialist support elements; and
  - (c) at least 35 beds.
- (3) Be prepared to deploy a treatment section of up to two casualty clearing points as required.

- (4) Be prepared to deploy a dental section and preventative medicine section as required.
- (5) Provide a road ambulance service as directed.
- (6) Be prepared to provide up to two AME teams.
- (7) Provide health advice to the FMO.
- (8) Provide medical support to refugees/displaced persons within capacity.
- (9) Assist NGOs, where possible, with distribution of food, medical supplies and water to refugees/displaced persons.
- (10) Be prepared to augment GHANBATT security force in accordance with UNAMIR instructions for security of UN and NGO installations in KIGALI CITY.

14. **BRITISH CONTINGENT (OP GABRIEL)**

a. **Grouping.** Engineer squadron, Log Sp squadron, Fd Amb and Maint coy.

b. **Tasks.**

- (1) Provide engr sp to UNAMIR principally through the maint of routes, repair of bridges and the provision of water pts.
- (2) Provide engr advice to HQ UNAMIR.
- (3) Assist in the restoration of essential svcs and facilities as dir by HQ UNAMIR.
- (4) Be prepared to clear mines, unexploded ordinance and booby traps for other UNAMIR contingents where appropriate and where resources will allow.
- (5) Provide med sp to refugees/displaced persons as dir by HQ UNAMIR.
- (6) Provide surgical sp to UNAMIR as dir by HQ UNAMIR.
- (7) In conjunction with BROWN and ROOT, provide 2nd line repair and recovery sp to UNAMIR contingent vehs and eqpt within deployed capabilities.
- (8) Provide maint advice to HQ UNAMIR as required.
- (9) Provide bulk fuel sups to UNAMIR as dir by HQ UNAMIR and limited distr of fuel to UNAMIR units within KIGALI.



(10) Assist NGOs with distribution of food, water and other humanitarian sups to refugees/displaced persons.

(11) Assist in tpt of refugees and displaced persons to their home areas where possible.

(12) Provide a focus for tasking of UNAMIR tpt assets and assist with coord of log sp to force as dir.

15. HAC

a. Coordinate all activities of NGOs and other Humanitarian organizations.

b. Assist US Force in their humanitarian efforts.

c. Arrange reception of the refugees at GISENYI in coordination with Govt authorities and NGOs.

d. Identify the WAY STATIONS in between GISENYI and RUHengeri and assist Sector 5 and NGOs in establishing the WAY STATIONS.

e. Provide assistance to US Forces and NGOs to stabilize refugees in GOMA and BUKAVU.

f. Attract and motivate refugees/displaced persons to return to their homes.

g. Monitor the movement of refugees from GISENYI to RUHengeri.

h. Ensure that WAY STATIONS are well equipped with food, water and medical facilities.

i. Coordinate with US Forces and NGOs for lifting refugees from RUHengeri and GIKONGORO to their homes.

j. Select the DISTRIBUTION POINTS in the Prefecture/Commune in coordination with local authorities and Sector Commanders.

k. Disseminate all pertinent data to human rights rapporteur.

l. Prepare a guideline for the DISTRIBUTION PTS regarding their organization and tasks.

m. Collect data from Sectors on the need of the affected people, eg. farming tools, seeds, fertilizer, house building materials, health centres etc.

16. Coordinating Instructions

a. Boundaries - see Annex A.

b. Routes - see Annex C.

c. ROE - see Operational Directive No 02-ROE.

(1) Weapon readiness Status

(a) State Green - Sectors 1, 2, 3, and 5.

(b) State Yellow - Sectors 4A, 4B, and 4C.

d. Information Collection Requirements. The Force Commander's Primary Information Requirements (PIR) will be distributed weekly or more frequently if required.

e. Timings

(1) RIP (GHANBATT/ZAMBATT). As per WNGO dated 23 Aug 94.

(2) Matrix depicting future deployment schedule is shown at Annex E.

ADMINISTRATION AND LOGISTICS

17. See ADMINORD no 17 TBI before 4 Sep 94.

a. Medical. See MEDOPS 01 dated 22 Aug 94.

COMMAND AND SIGNALS

18. Control. See Annex D. MILOB HQ and CIVPOL HQ are to effect liaison, coordination and administrative control through discrete channels. OP SUPPORT HOPE (US), OP PASSAGE (CDN) and OP GABRIEL (UK), although under national control vice UNAMIR are to operate in close cooperation and in support of the UNAMIR humanitarian effort. Sector HQ are to report to the Force HQ indicated below:

a. Sectors 1, 2 and 5 - HQ Main; and

b. Sectors 3, 4A, 4B and 4C - HQ TAC.

c. Location of Headquarters.

(1) UNAMIR Force HQ - KIGALI.

(2) UNAMIR Force HQ (TAC) - BUTARE.

(3) Sector 1 - BUYUMBA.

(4) Sector 2 - KIGALI.

(5) Sector 3 - GITARAMA.

(6) Sector 4A - GIKONGORO.

(7) Sector 4B - KIBUYE.

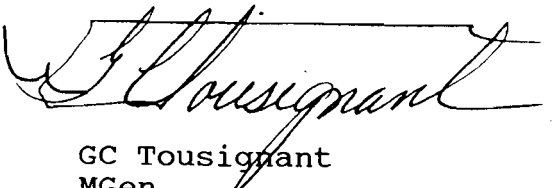
(8) Sector 4C - CYANGUGU.

(9) Sector 5 - GISENYI.

d. Frequencies and Callsigns. See CEOI 003/94.

19. References A, B and C are cancelled.

20. Acknowledge.

  
GC Tousignant  
MGen  
Force Commander

Annexes:

Annex A. Force Deployment  
Annex B. Humanitarian Control Measures  
Annex C. Routes  
Annex D. Command and Control Network  
Annex E. Future Deployment Schedule

Distribution List:

External:

Action:

Copy No

US Forces	1
Canadian Contingent	2
AUSMED	3
BRIT CON	4
MILOB Gp HQ	5
Sector 1	6
Sector GHANBATT	7
Sector MALAWI COY	8
Sector ZAMBATT	9
Sector FRAFBATT	10
Sector ETHIOBATT	11
Sector TUNBATT	12
UNCIVPOL	13

Information:

UNDPKO ( Mission Planning Service ) 14

Internal:

Action:

MA to FC	15
DFC/COS	16
G1/CMPO	17
G2	18
G3	19
G3 Plans	20
G4	21
G5/CAO	22
G6/FSO	23
MOVCON	24
HAC	25
Camp Comdt	26
FMO	27

Information:

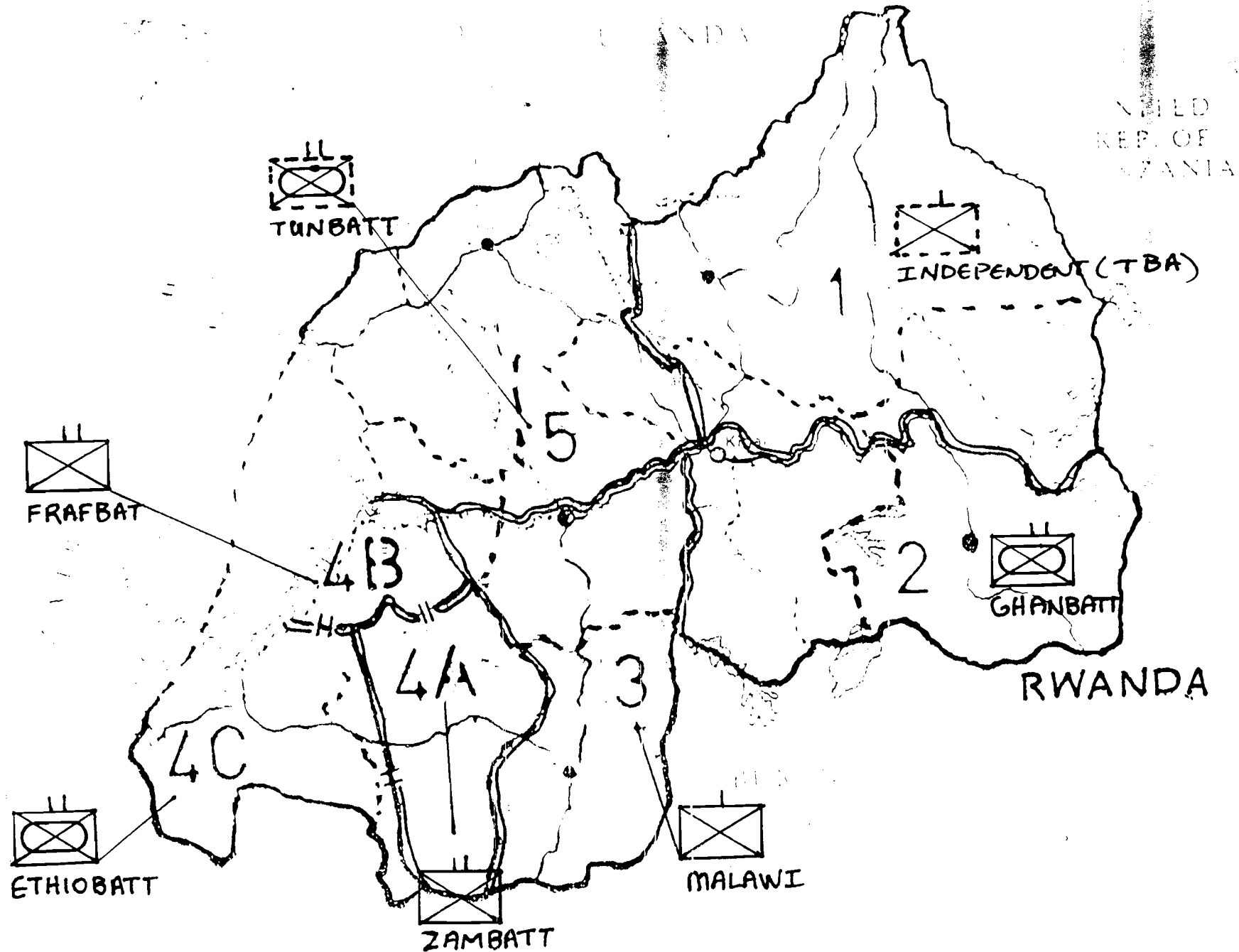
SRSG's Office	28
File	29
Spare	30-34

Action

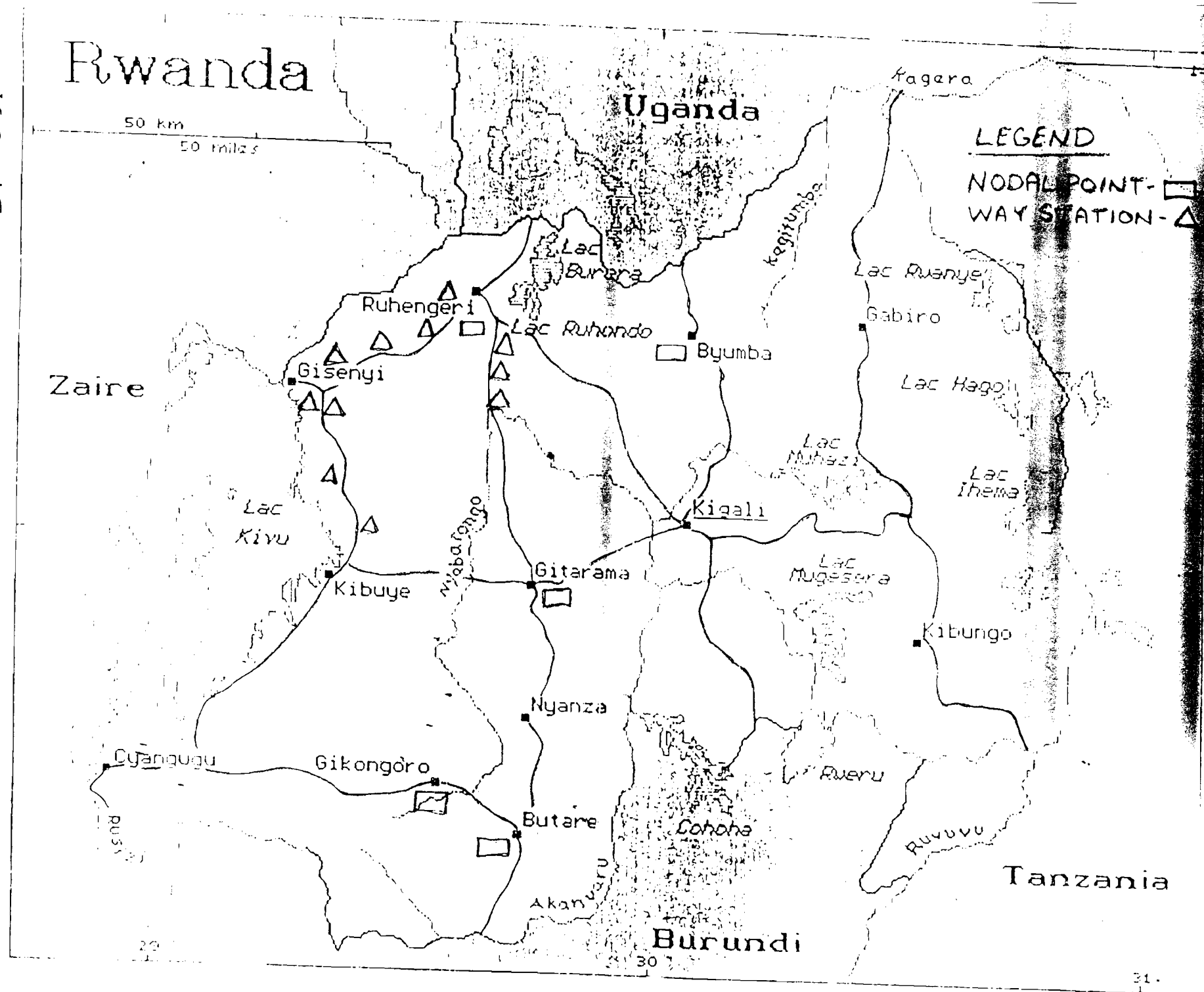
UNAMIR HQ (TAC) 35

# DEPLOYMENT

ANNEX A  
TO OP ORDER 18  
DATED 31 AUG 94



ANNEX B  
TO OP ORDER 18  
DATED 31 AUG 94



## ANNEX C

SER	ROUTE	DESCRIPTION
(a)	(b)	(c)
1	BLUE	KIGALI - SHYORONG - TARE - NYARTOVU - RUHENGIERI-GISORO
2	MAROON	RUHENGIERI - MUKINGO - MUKAMURA - GISENYI
3	ORANGE	JUNCTION POINT-B - MABANZA - KIBUYE - CYESHA - JUNCTION POINT-C
4	PINK	CYANGUGU - NYAOINJANO - GIKONGORO - BUTARE
5	YELLOW	GITARAMA - KIGOMA - BUTARE - BUJUMARE
6	RED	KIGALI - GITARAMA - MABANZA
7	WHITE	KIGALI - BUGESERA - KANZENZE - MUYINGA
8	BROWN	KIGALI - BIVERAMUURA - RUREMBO - BYUMBA - KABALE
9	GREEN	KIGALI - KANOMBE - GIKORO - RWANAGAMA - KAYONZA - MURAMBI - GABIRO - MURENGERO - MATIMBA - KAMPALA
10	BLACK	RWANAGAMA - KEYONZA - JUNCTION POINT-D (KIBUNGO(SOUTH)) - RUSUMO - BUKUBA
11	GOLD	MUSUBATI - GATUMBE - NYAMUTERA - RUHENGIERI
12	GREY	CYANGUGU - JUNCTION POINT-A (BUKAVU(NORTH)) - CYIMBOGO - GISHOMA - BUGARAMA - UVIRA

JUNCTION POINT-A: GRID 753 204  
 JUNCTION POINT-B: GRID 956 323  
 JUNCTION POINT-C: GRID 241 125  
 JUNCTION POINT-D: GRID 619 639

## ANNEX C

TO OP ORDER 18

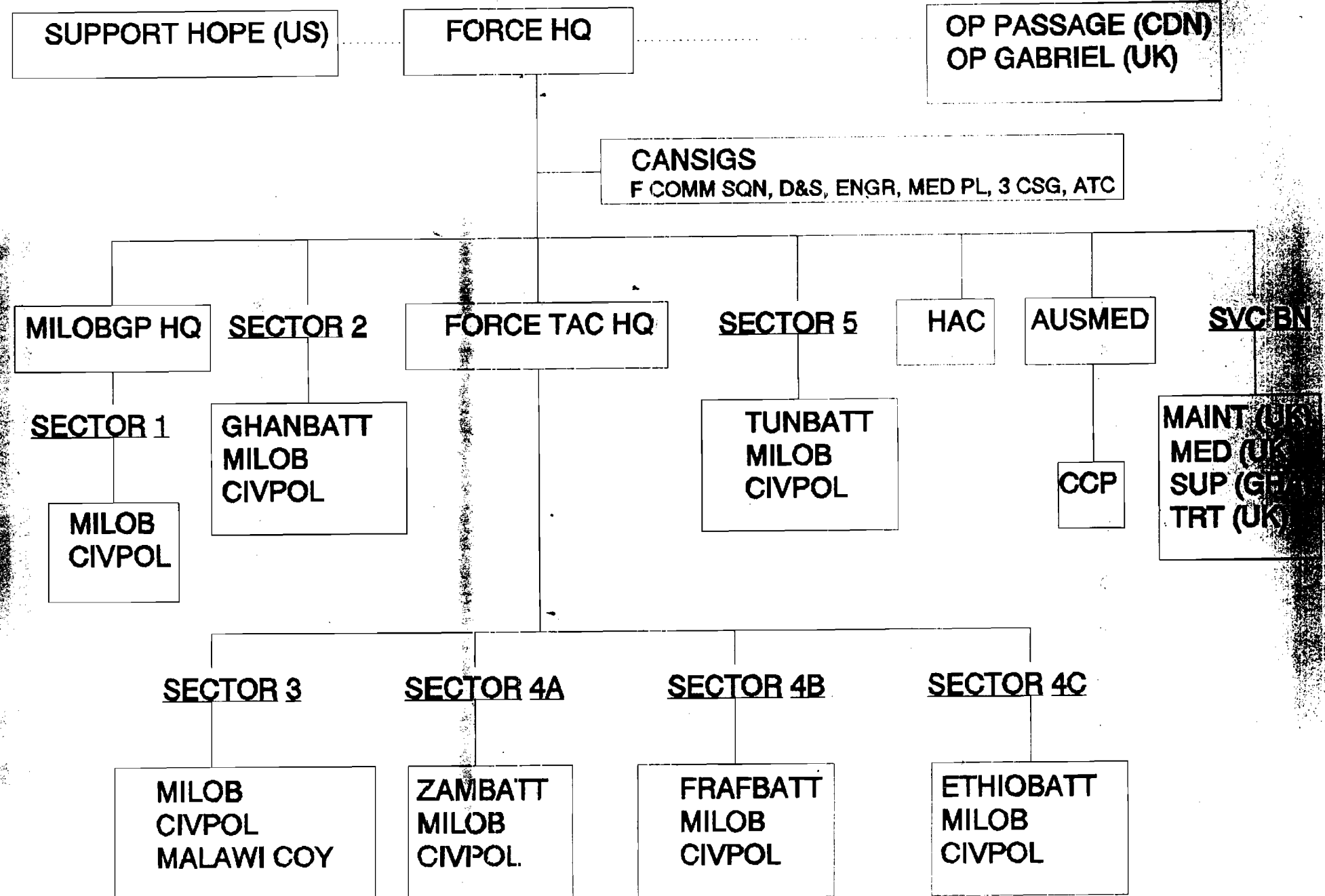
DATED 31 AUG 94





# UNAMIR COMMAND AND CONTROL

OP ORDER 18  
DATED 3/ AUG 94



# CONTINGENT DEPLOYMENT PLANNING SCHEDULE

ANNEX E TO

OP ORDER 18

AUGUST

SEPTEMBER

DATED 3/ AUG 94

DATE	20	21	22	23	24	25	26	27	28	29	30	31	1	2	3	4	5	6	7	8
INDBATT														R						
MALICOY									RTM							R				
MALAWI	R&A	R&A	R&A	A	A	A	A	A&M	A&M	DC										
NIBATT												RTM			R				A	A
PAKBATT																				
TUNBATT			R	R	R								A	A	A	A	A	M	M	M
ZAMBATT						A	R							A			M	M		
DATE	20	21	22	23	24	25	26	27	28	29	30	31	1	2	3	4	5	6	7	8

RECCE - (R)

ADVANCE PARTY - (A)

MAINBODY - (M)

DEPLOYMENT COMPLETED - (DC)

READY TO MOVE - (RTM)

ANNEX E TO

OP ORDER 18

DATED 31 AUG 94

**SEPTEMBER**

9	10	11	12	13	14	15	16	17	18	19	20	21	22	23	24	25	26	27	28	29	30
A	M	M																			
M	M	M	M	M	M	M	M														
9	10	11	12	13	14	15	16	17	18	19	20	21	22	23	24	25	26	27	28	29	30

RECCE - (R)

ADVANCE PARTY - (A)

MAINBODY - (M)

DEPLOYMENT COMPLETED - (DC)

READY TO MOVE - (RTM)

Copy No    of  
UNAMIR  
Force HQ  
Kigali, Rwanda

8 Aug 1994

3000.15 (Ops)

See Distribution:

SUBJECT: OPERATION DIRECTIVE NO. 17

Reference:

- A.    Operation Order No 16 Dated 25 July 1994.
- B.    Modification No 1 to OPO - 16 Dated 6 Aug 94.

**SITUATION**

1.    a.    **Military**. The military situation in Rwanda has improved considerably and it seems that the war has ended with the capture of Gisenyi by RPA. RPA now controls the entire country excluding the HPZ in the south west. French Led Coalition Force (FCF) is continuing to disarm the members of the militia and other illegal elements in addition to their humanitarian activities. However, a considerable number of ex-government forces have taken shelter inside the HPZ though FCF has disarmed more than 8000 members of ex-government forces in Goma. FCF has also planned to withdraw from Rwanda by 22 August 94.
- b.    **Political**. Improvement in the Military situation has directly influenced the political situation. The newly formed BBGNU of Rwanda has started functioning. USA has already reopened its embassy in Rwanda and some other countries, for example Belgium, are also planning to re-establish their embassies in Rwanda. Beside this a number of high level teams from different countries are visiting Rwanda and having talks with the present Government.
- c.    **Humanitarian**. Humanitarian situation has deteriorated in Goma where more than a million Rwandese took refuge earlier in front of the RPA advance. Hundreds of people are dying every day in Goma due to the out break of disease and starvation. More and more NGOs are visiting and working in those areas. A lot of countries have come forward to assist and stabilize the situation.
- c.    **UNAMIR**. Changes in military, political and humanitarian aspect have also made UNAMIR to alter its working procedure. Under the expanded mandate of Security Council, UNAMIR is

now expected to deploy forces and support capabilities in RWANDA with an aim to contribute largely in the military, political and humanitarian fields. Ghana, UK, Australia, Ethiopia, Nigeria, Canada and USA have agreed to contribute forces. Those of USA not coming directly under UNAMIR but in direct support for humanitarian assistance.

### MISSION

2. UNAMIR is to assist and coordinate the humanitarian support of participating countries/organizations with a view to bring rapid and effective end to the crisis. in Rwanda.

### EXECUTION

#### 3. Concept of Operation

a. The thrust of the effort is to bring back the refugees and displaced persons and resettle them in their respective home areas. About one million refugees are presently staying in Goma and two millions displaced persons are waiting to return home from Sector 4. Confidence building activities among the population in ensuring their security, extensive assistance in carrying out humanitarian tasks by different countries/ agencies, monitoring cease-fire, assisting Broad Base Government of National Unity to participate in establishing relief capability in Rwanda and in re-settling displaced persons/refugees is of paramount importance.

b. Most refugees/displaced persons seem eager to return to their home areas as quickly as possible. As an example over 50,000 have already started their long journey from Goma on foot. UNAMIR in consultation with US Forces and other contributing countries, has evolved a plan for their successful return. This operation must:

- (1) Stabilize refugees/displaced persons in their present location.
- (2) Encourage them to return to their home areas.
- (3) Provide transportation, food, water, medical assistance and some accoutrements on their way to their home areas.
- (4) Prepare home areas for return of refugees and improve essential life supporting services.
- (5) Assist the people to return to their normal life.
- (6) Handover in due course all humanitarian activities to the Rwandese Government.

c. The operation will be conducted in 4 phases:

(1) Phase 1. To continue in stabilizing the refugees/displaced persons in the present locations by providing food, water, medical support and rudimentary public health measures with an emphasis in sector 4 where limited to no services have created a situation of despair and a potential massive human tidal wave west to Bukavu. Simultaneously planning for home area preparation and repatriation of refugees/ displaced persons. Concurrently, open the Kigali International Airport for 24/7 operations and improve essential services in the capital, KIGALI.

(2) Phase 2. Phase 2 must emphasize the return of refugees to Rwanda and the enticement/encouragement of displaced persons in Rwanda to go back to their home areas. This phase will begin no later than Wednesday 10 Aug 94, with the deployment of the newly arrived UNAMIR, Canadian and US assets. KIGALI will be the centre of gravity of the humanitarian relief and sustainment effort/programme for Rwanda. The NODAL POINTS will be managed by the US Forces. From the NODAL POINTS materials will be brought to the Distributing Points under the arrangement of UNAMIR. UNAMIR along with NGOs and local authorities will distribute food and other items to the affected people. There will be a number of distributing points in each affected prefectures. Details to be worked out by HAC. Five NODAL POINTS will be established in RUHENGURI, BYUMBA, GITARAMA, BUTARE and GIKONGORO. In these NODAL POINTS trucks, food, assistance supplies (like soap), clean water and medical supplies and facilities will be stockpiled in a wholesale format. Men, experts, material handling, trucking and security will all be in evidence in order to ensure that onward distribution, and/or more extensive care/treatment, is provided to the various WAY STATIONS between these nodes and to the outlying areas under distribution from each node (see Annex A for boundaries of these humanitarian areas). The WAY STATIONS along the major return route are already being established every 20 Kms or so along the major priority corridor of GISENYI-RUHENGURI. This principal corridor leading to KIGALI will be implemented as priority one in this phase in order to relieve the pressure on GOMA. A pseudo-quarantine radius from the Zaire border is in effect (40 Kms, see Annex B) so as to screen cholera victims before they move beyond RUHENGURI to KIGALI. NGOs will be encouraged to assist in establishing the WAY STATIONS. Concurrently commence transport of seriously ill and other displaced persons from sector 4A and sector 4B through Gitarama to eastern and western prefectures. A second priority in this phase is the BURUNDI-BUTARE-GITARAMA-KIGALI corridor. The third priority is the TANZANIA-RUSUMO-KIBANGO, RWAMAGANA-KIGALI corridor. The Humanitarian Affairs Cell (HAC), of UNAMIR, with direct support from the US

civilian/ humanitarian element will coordinate all military support in the corridor so that there are no duplications in a particular area. The last priority is the BYUMBA-KIGALI corridor. During this phase, the majority of refugees will be returning to their home areas and emphasis will switch from route feeding and support to take-home WAY STATION centres located on the secondary axes.

(3) Phase 3. It is expected that most of the refugees/displaced persons will be well on their way to their home areas by the beginning of phase 3. They have to be supported logistically till the next harvest of crops expected by December/January if the planting happens in September/October as RWANDA is an aggro based country. Food, clean water, medical facilities, roads and bridges reconstruction, home building material and farming tools etc will have to be initiated and/or stockpiled in the NODAL POINTS for onward distribution and/or production.

(4) Phase 4. As conditions in RWANDA stabilize and BBGNU gets control of the situation and the Govt with NGOs is capable of providing sufficient assistance without direct UNAMIR and US support a progressive handover of all activities to the Govt and NGOs will be done in accordance with a normalisation process. This phase is accomplished when the majority of the refugees/displaced persons returned to their homes and the routine life sequence is re-established.

b. Deployment. The overall deployment of UNAMIR force will be as per OPO-16 (MOD-I). Operation Support Hope (US) and Operation Passage (Canada) will deploy according to coordination with UNAMIR and RPA.

#### US FORCES

4. a. Grouping. Will be provided by US Force.

b. Deployment. Operation Hope is requested to provide their detailed deployment plan by 03 Aug 94. Kigali Airport, Kacyru Gendarmerie Camp and NODAL POINTS will be the centres of deployments.

c. Tasks.

(1) Assist the Govt in re-structuring basic infrastructure in Kigali.

(2) Assist the Govt in re-vamping the Kigali Airport.

(3) Establish NODAL POINTS at RUHENGIRI, BYUMBA, GITARAMA, BUTARE and GIKONGORO.

(4) Dump food and medical supplies at the NODAL POINTS.

(5) Provide purified water at the NODAL POINTS. Water may be purified at the NODAL POINTS and be stored for further distribution.

(6) Provide ware house control, material handling and trucks with drivers at the NODAL POINTS for carrying materials to the DISTRIBUTION POINTS.

(7) Assist UNAMIR in transporting refugees/displaced persons to their homes.

(8) Establish treatment centres at KIBONGO, GITARAMA and BUTARE.

#### CANDADIAN CONTINGENT

5. a. Grouping. 2 Fd Amb (RWANDA/ZAIRE) will deploy with a medical coy, an engr platoon with water purification detachment, a defence and security platoon and a services platoon.

b. Deployment. This will be in the vicinity of MARERU, in the commune MUTURA (RWANDA) - approx 10 km from the ZAIRE border and approx 20 km from GISENYI. Water purification will be provided at LAKE KARAGO or LAKE KIVU.

c. Tasks

(1) Establish hospital and medical clinic facilities at deployment sites.

(2) Provide medical support to refugees/displaced persons to stabilize their situation.

(3) Encourage refugees to return to their home areas.

(4) Assist NGOs where possible with the distribution of food and water to refugees/displaced persons.

(5) Assist UNAMIR in transporting the refugees to their home areas when possible.

#### HAC

6. a. Coordinate all activities of NGOs and other Humanitarian organizations.

b. Assist US Force in their humanitarian efforts.

c. Arrange reception of the refugees at GISENYI in coordination with Govt authorities and NGOs.

d. Identify the WAY STATIONS in between GISENYI and RUHENGERI and assist Sector 5 and NGOs in establishing the WAY STATIONS.



- e. Provide assistance to US Forces and NGOs to stabilize refugees in GOMA and BUKAVU.
- f. Attract and motivate refugees/displaced persons to return to their homes.
- g. Monitor the movement of refugees from GISENYI to RUHENGARI.
- h. Ensure that WAY STATIONS are well equipped with food, water and medical facilities.
- i. Coordinate with US Forces and NGOs for lifting refugees from RUHENGARI and GIKONGORO to their homes.
- j. Coord with US Forces for establishing NODAL POINTS.
- k. Select the DISTRIBUTION POINTS in the Prefecture/Commune in coordination with local authorities and Sector Commanders.
- l. Disseminate all pertinent data to human rights rapporteur.
- m. Prepare a guideline for the DISTRIBUTION PTS regarding their organization and tasks.
- n. Collect data from Sectors on the need of the affected people, eg. farming tools, seeds, fertilizer, house building materials, health centres etc.

#### SECTORS 1, 2, AND 3

- 7. a. Grouping. NO change from refs A and B.
- b. Deployment. No change from refs A and B.
- c. Tasks.
  - (1) Phase 1.
    - (a) Identify and list all the refugee/displaced persons' camp in the area of responsibility.
    - (b) Coordinate all the activities of the NGOs.
    - (c) Assist the NGOs and the US forces in distributing food, water and medical support.
    - (d) Provide security in the refugee/displaced persons' camp.
    - (e) Assist the local authority in maintaining law and order situation in the camps.
    - (f) Carryout recce and establish water points in

coordination with the NGOs and local authorities at commune level.

(g) Carryout recce and find out the food distribution point at commune level.

(h) Organise all available resources to move the refugees/displaced persons.

(i) Be prepared to provide transports for the repatriation.

(j) Try and motivate the people to return to their home.

(2) Phase 2.

(a) Provide escort for the convoy carrying the refugees/displaced persons if required.

(b) Coordinate movement of displaced persons to their homes.

(c) Encourage all the people to return home.

(d) Coordinate with local authorities regarding the safety of the people.

(e) Assist the NGOs and the US forces in the NODAL POINTS.

(f) Make relief committee in coordination with the local authority at commune level for smooth operation of relief work.

(g) Assist the relief committee in preparation of list of the affected families.

(3) Phase 3.

(a) Assist the relief committee, NGOs and the US forces in distributing food, water and other relief items.

(b) Assist the affected people in settling down to their respective homes.

(c) Assess the requirement of the affected people in settling down specially in farming sector and forward the same to HAC.

(d) Assist in distributing of the house building material and farming tools.

(e) Coordinate all the activities of the NGOs.

(4) Phase 4. Handover all activities to the Government and NGOs progressively as the situation becomes normal.

SECTOR 4A (GHANBATT)

8. a. Grouping. Same as OPO-16.
- b. Deployment. Same as OPO-16.
- c. Tasks. Tasks in addition to the tasks mentioned in OPO-16 are as follows:

(1) Phase 1.

- (a) Identify and list all the refugee/displaced persons' camp in the area of responsibility.
- (b) Coordinate all the activities of the NGOs.
- (c) Assist the NGOs and the US Force in distributing food, water and medical support.
- (d) Provide security in the refugee/displaced persons' camp.
- (e) Assist the local authority in maintaining the law and order situation in the camps.
- (f) Carryout recce and establish water points in coordination with the NGOs and local authorities at commune level.
- (g) Carryout recce and identify the food distribution points at commune level.
- (h) Organise all available resources to move the refugees/displaced persons.
- (i) Be prepared to provide transports for the repatriation.
- (j) Try and motivate the people to return to their home.

(2) Phase 2.

- (a) Provide escorts for the convoy carrying the refugees/displaced persons if required.
- (b) Provide transports and arrange convoy from GIKONGORO towards BUTARE / KIGALI / GITARAMA.
- (c) Encourage all the people to return home.

(d) Coordinate with the RPF regarding the safety of the people.

(e) Assist the NGOs and the US Forces in the NODAL POINTS.

(f) Make relief committee in coordination with the local authority at commune level for smooth operation of relief work.

(g) Assist the relief committee in preparation of list of the affected families.

(3) Phase 3.

(a) Assist the relief committee, NGOs and the US Forces in distributing food, water and other relief items.

(b) Assist the affected people in settling down to their respective homes.

(c) Assess the requirement of the affected people for settling down specially in farming sector and forward the same to HAC.

(d) Assist in distributing of the house building material and farming tools.

(e) Coordinate all the activities of the NGOs.

(4) Phase 4. Handover all activities to the Government and NGOs progressively as the situation becomes normal.

SECTOR 4B (SENEGALESE/CHADIAN BN)

9. a. Grouping.

b. Deployment. Will continue to remain in Sector 4B.

c. Tasks.

(1) Phase 1.

(a) Identify and list all the refugee/displaced persons' camp in the area of responsibility.

(b) Coordinate all the activities of the NGOs.

(c) Assist the NGOs and the US Forces in distributing food, water and medical support.

(d) Provide security in the refugee/displaced persons' camp.

- (e) Assist the local authority in maintaining the law and order situation in the camps.
- (f) Carryout recce and establish water points in coordination with the NGOs and local authorities at commune level.
- (g) Carryout recce and identify the food distribution points at commune level.
- (h) Organise all available resources to move the refugees/displaced persons.
- (i) Be prepared to provide transport for the repatriation.
- (j) Try and motivate the people to return to their home.

(2) **Phase 2.**

- (a) Provide escorts for the convoy carrying the refugees/displaced persons if required.
- (b) Provide transports and arrange convoy for displaced persons returning home.
- (c) Encourage all the people to return home.
- (d) Coordinate with the RPF regarding the safety of the people.
- (e) Assist the NGOs and the US Forces in the NODAL POINTS.
- (f) Make relief committee in coordination with the local authority at commune level for smooth operation of relief work.
- (g) Assist the relief committee in preparation of list of the affected families.

(3) **Phase 3.**

- (a) Assist the relief committee, NGOs and the US forces in distributing food, water and other relief items.
- (b) Assist the affected people in settling down to their respective homes.
- (c) Assess the requirement of the affected people for settling down specially in farming sector and forward the same to HAC.
- (d) Assist in distributing of the house building material and farming tools.

(e) Coordinate all the activities of the NGOs.

(4) **Phase 4.** Handover all activities to the Government and NGOs progressively as the situation becomes normal.

**SECTOR 4C (ETHIOPIAN BN)**

10. a. **Grouping.** As per UN table of organisation.

b. **Deployment.** Will be deployed in Sector 4C.

c. **Tasks.**

(1) **Phase 1.**

(a) Identify and list all the refugee/displaced persons' camp in the area of responsibility.

(b) Coordinate all the activities of the NGOs.

(c) Assist the NGOs and the US forces in distributing food, water and medical support.

(d) Provide security in the refugee/displaced persons' camp.

(e) Assist the local authority in maintaining the law and order situation in the camps.

(f) Carryout recce and establish water points in coordination with the NGOs and local authorities at commune level.

(g) Carryout recce and identify the food distribution points at commune level.

(h) Organise all available resources to move the refugees/displaced persons.

(i) Be prepared to provide transports for the repatriation.

(j) Try and motivate the people to return to their home.

(2) **Phase 2.**

(a) Provide escort for the convoy carrying the refugees/displaced persons if required.

(b) Provide transports and arrange convoy for displaced persons' returning home.

(c) Encourage all the people to return home.

(d) Coordinate with the RPF regarding the safety of the people.

(e) Assist the NGOs and the US Force in the NODAL POINTS.

(f) Make relief committee in coordination with the local authority at commune level for smooth operation of relief work.

(g) Assist the relief committee in preparation of list of the affected families.

(3) Phase 3.

(a) Assist the relief committee, NGOs and the US Force in distributing food, water and other relief items.

(b) Assist the affected people in settling down to their respective homes.

(c) Assess the requirement of the affected people for settling down specially in farming sector and forward the same to HAC.

(d) Assist in distributing of the house building material and farming tools.

(e) Coordinate all the activities of the NGOs.

(4) Phase 4. Handover all activities to the Government and NGOs progressively as the situation becomes normal.

SECTOR 5

11. a. Grouping. No change from refs A and B.

b. Deployment. No change from refs A and B.

c. Tasks.

(1) Phase 1.

(a) Identify and list all the refugee/displaced persons' camp in the area of responsibility.

(b) Coordinate all the activities of the NGOs.

(c) Assist the NGOs and the US forces in distributing food, water and medical support.

(d) Provide security in the refugee/displaced persons' camp.

(e) Assist the local authority in maintaining the law and order situation in the camps.

(f) Carryout recce and establish water points in coordination with the NGOs and local authorities at commune level.

(g) Carryout recce and find out the food distribution point at commune level.

(h) Organise all available resources to move the refugees/displaced persons.

(i) Be prepared to provide transport for the repatriation.

(j) Try and motivate the people to return to their home.

(2) **Phase 2.**

(a) Provide escort for the convoy carrying the refugees/displaced persons if required.

(b) Provide transports and arrange convoy from GISENYI to RUHENGERI.

(c) Encourage all the people to return home.

(d) Coordinate with the RPF regarding the safety of the people.

(e) Assist the NGOs and the US Forces in the NODAL POINTS.

(f) Assist in the distribution of food and water in the WAY POINTS.

(g) Make relief committee in coordination with the local authority at commune level for smooth operation of relief work.

(h) Assist the relief committee in preparation of list of the affected families.

(3) **Phase 3.**

(a) Assist the relief committee, NGOs and the US forces in distributing food, water and other relief items.

(b) Assist the affected people in settling down to their respective homes.

(c) Assess the requirement of the affected people for settling down specially in farming sector and forward the same to HAC.



(d) Assist in distributing of the house building material and farming tools.

(e) Coordinate all the activities of the NGOs.

(4) Phase 4. Handover all activities to the Government and NGOs progressively as the situation becomes normal.

#### COMMAND AND CONTROL

12. All sectors will report to Force HQ for direction regardless of whether they are commanded by a MILOB or a Battalion Commander. MILOB Gp HQ and CIVPOL HQ will continue to have their normal liaison, coordination and administrative tasks associated with their personnel. OP support Hope (US) and OP Passage (CDN), although under national control vice UNAMIR will operate in close cooperation and support of the UNAMIR humanitarian effort. Detail Command and Control net work is given in Annex - C.



R A DALLAIRE  
Maj Gen  
Force Commander

#### Annexes

- A. Map showing NODAL POINTS and WAY STATIONS.
- B. Map showing Pseudo - Quarantine Radius.
- C. Command and Control Net Work

Distribution:

External:

Action:	<u>Copy No</u>
US Forces	1
Canadian Contingent	2
MILOB Gp HQ	3
Sector 1	4
Sector 2	5
Sector 3	6
Sector 4A	7
Sector 4B	8
Sector 4C	9
Sector 5	10
UNCIVPOL	11

Information:

UNDPKO ( Mission Planing Service )	12
French Coalition Force	13

Internal:

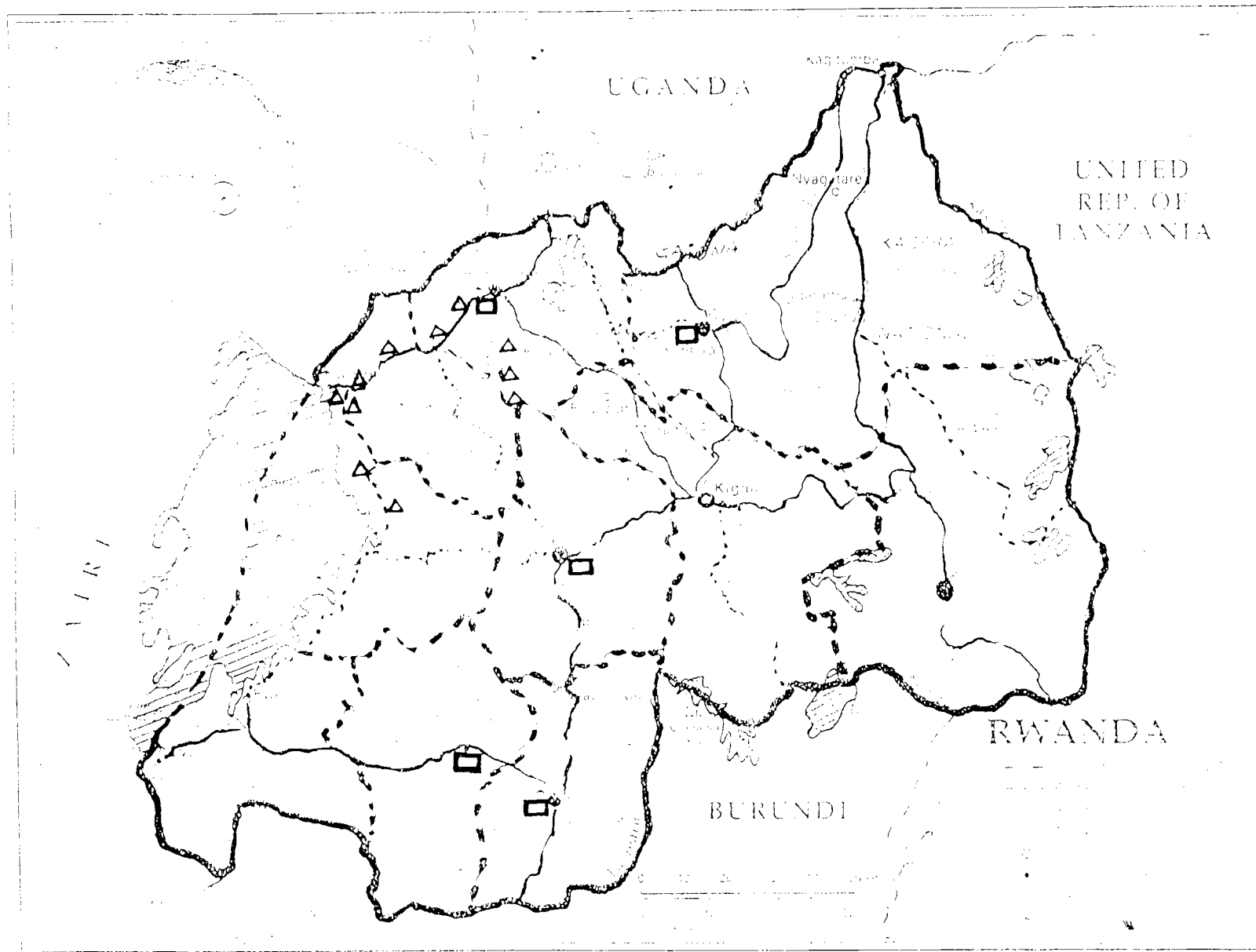
Action:

DFC	14
CAO	15
COO	16
HAC	17
C Plans	18
C Log O	19
CMPO	20
FSO	21
Camp Comdt	22

Information:

SRSG's Office	23
File	24
Spare	25-30

ANNEX-A  
TO OPDIR-17

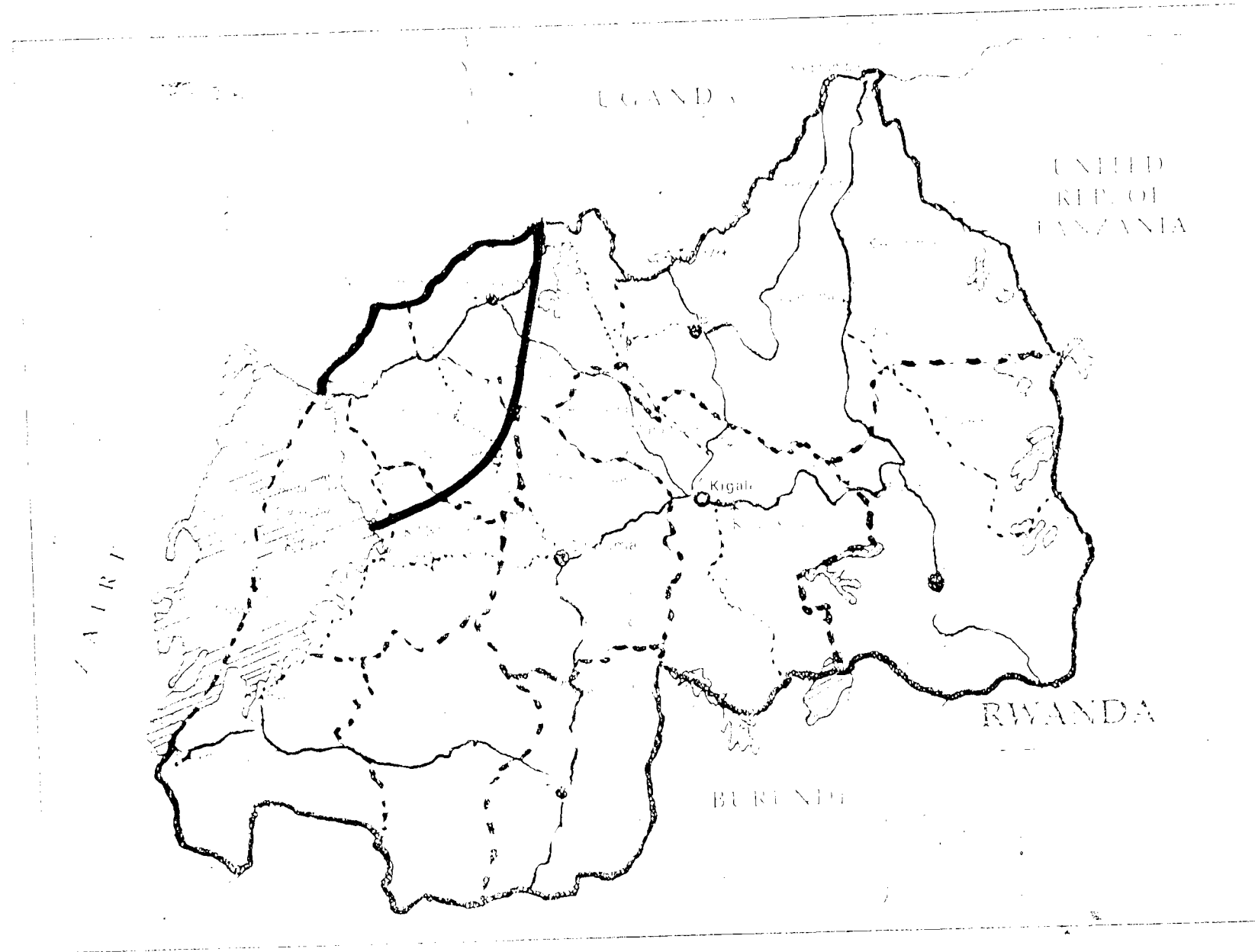


LEGEND

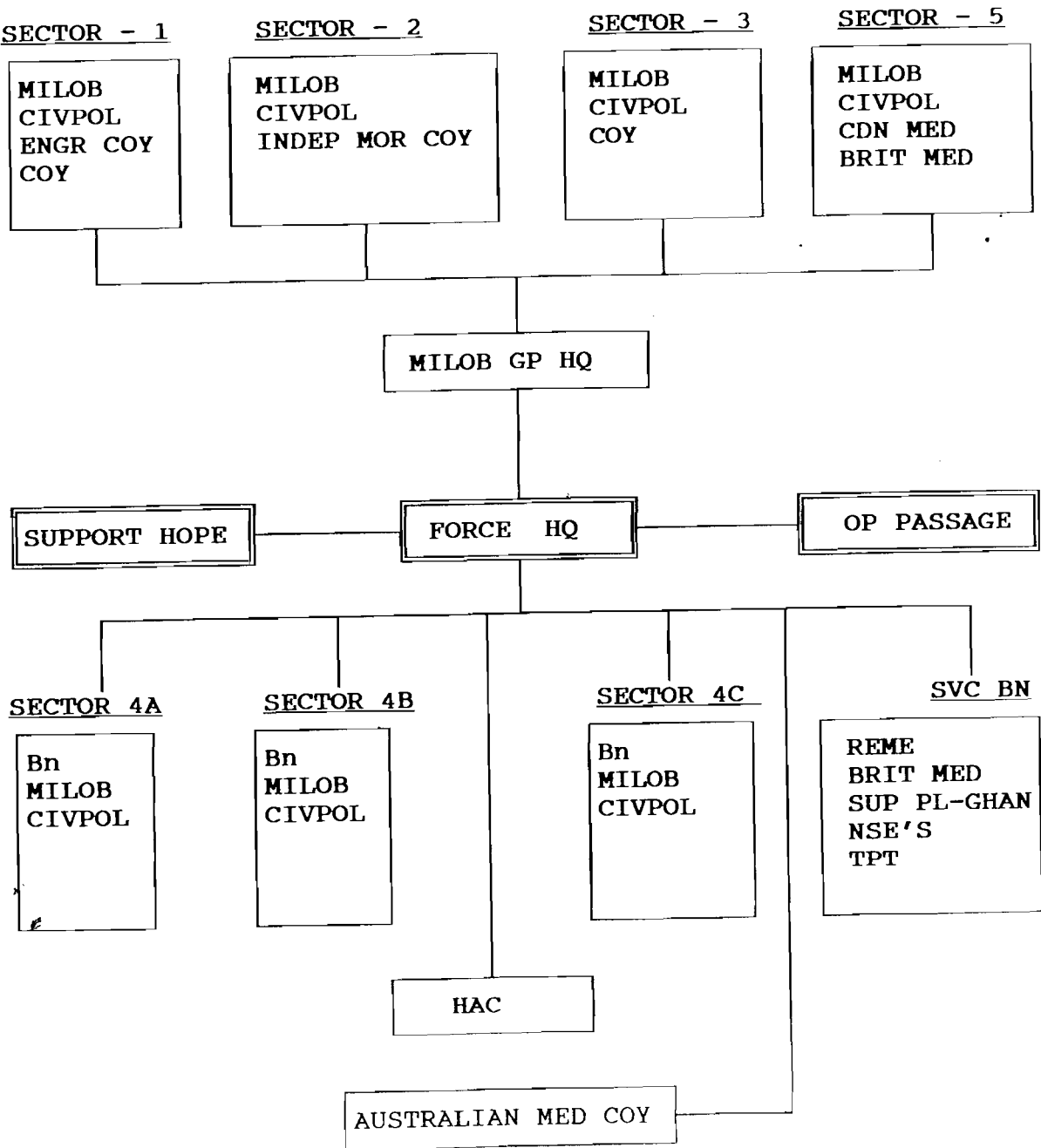
1. NODAL POINT - □

2. WAY STATION - ▲

ANNEX-B  
TO OPDIR -17



UNAMIR COMMAND AND CONTROL



UN SECRET

Copy No... of...

UNANIR  
FORCE HQ  
Kigali

3000.15 (Ops)

6 August, 94.

See Distribution

SUBJECT: MODIFICATION NO. 1 TO OPERATION ORDER NO. 16

Reference:

A. Operation Order No. 16 dated 25 July 94.

1. The following amendments have been made to OPO 16.

a. EXECUTION. Para 6b must now read "UNAMIR Forces engaged in the Relief in Place Operations will work under Chapter VI during all Phases".

b. Para 6c must now read "Four Infantry battalions (three mechanized and one motorized)"

c. Para 7b. Phase II must now read as follow:

(1) Relief in Place Operation. Relief in Place operation with a view to replace FCF in Sector 4 by UNAMIR troops. In that, GHANBATT (Bn+) will deploy in Sector 4A, One Mechanized Inf Battalion (Bn (+)) in Sector 4B, One Motorized Inf Battalion (Bn(+)) in Sector 4C.

(2) At the same time, deployment of one motorized battalion in Sector 5, one Engineer Company in Sector 1 and two Independent Infantry Companies in Sectors 2 and 3 will continue, accompanied by the deployment of supporting elements, UNMOs and UNCIVPOL.

d. Para 8a. Delete second sentence. Para will now read: "Grouping. Full strength of 800 personnel and 50 APCs.

e. Para 9a. Delete the second sentence. Para will now read as follows:

1 of 9

UN SECRET

"Grouping. As per UN Table of Organisation and equipment (approx strength - 800 personnel)".

f. Para 10 will now be as follows:

10. Mechanized Battalion Three.

a. Grouping. As per UN Table of Organization and equipment (approximate strength 800 personnel).

b. Deployment. The Battalion will be deployed at Sector 5 after detailed recce by own troops and based on information received from MILOBs. Sector HQ will be located at RUHENGIERI. A suggested deployment is shown at Annex B.

c. Tasks.

(1) Phase I. Carry out necessary ground recce prior to commencing Phase-II.

(2) Phase-II. Deploy as per plan in Sector 5.

(3) Phase-III.

(a) Be fully operational.

(b) Provide armed escorts on requirement.

(c) Establish safe haven areas for displaced persons and secure these camps by static guards/mobile patrolling.

(d) Conduct exchange of refugees/displaced persons on orders from Force HQ Humanitarian Cell.

(e) Provide escorts on order to provide security to humanitarian aid convoys and distribution points.

(f) Participate in security operations with local authorities such as Communal Police and Gendarmerie.

UN SECRET

(g) Undertake, control measures (road blocks, cordon and search, etc) in conjunction with local authorities.

(h) Undertake deterrent operations with local authorities against illegal groups.

(i) Control the main axis in Sector 5.

(j) Monitor border crossing by refugees and armed individual/groups in own area of responsibility.

(k) Control and monitor all movements from ZAIRE to own area of responsibility.

(l) Provide security in large towns.

(m) Protect airfield/strip(s) in own area.

(n) Detain/arrest any suspected individual/groups and hand them over to local authority.

(o) Guard UN installations in own area.

(4) **Phase-IV.** Handover all responsibilities to Rwandese Armed Forces.

g. Para 11 will now be as follows:

11. **Motorized Battalion**

a. **Grouping.** As per UN Table of Organization and equipment (Approx strength 800 personnel).

b. **Deployment.** The battalion will be deployed in Sector 4c after detailed recce by own troops and based on information received from MILOBs. Sector HQ will be at CYANGUGU. A suggested deployment is shown at Annex B.

c. **Tasks.**

(1) **Phases I.** Carry out necessary ground recce prior to commencing Phase-II.



UN SECRET

(2) **Phase-II**. Conduct "RELIEF IN PLACE" Operation and deploy as per plan after replacing French troops in Sector 4C.

(3) **Phase-III**

(a) Be fully operational.

(b) Provide armed escorts on requirement.

(c) Establish safe haven areas for displaced persons and secure these camps by static guards/mobile patrolling.

(d) Conduct exchange of refugees/displaced persons on orders from Force HQ Humanitarian Cell.

(e) Provide escorts on order to provide security to humanitarian aid convoys and distribution points.

(f) Participate in security operations with local authorities such as Communal Police and Gendarmerie.

(g) Undertake, control measures (road blocks, cordon and search, etc) in conjunction with local authorities.

(h) Undertake deterrent operations with local authorities against illegal groups.

(i) Control the main axis in Sector 4c.

(j) Monitor border crossing by refugees and armed individuals/groups in own area of responsibility.

(k) Provide security in large towns.

(l) Protect airfield/strip(s) in own area.

(m) Detain /arrest any suspected individual/groups and hand them over to local authority.

UN SECRET

(n) Secure the road passing through the forest in the area of responsibility by patrolling.

(o) Ensure that RGF troops are not in defensive positions.

(p) Guard UN installations in own area.

(q) Maintain close liaison with FCF till their departure.

(4) **Phase-IV**. Handover all responsibilities to Rwandese Armed Forces.

h. Para 12 will now read: 12. "**Independent Motorized Company One**".

i. Para 13 will now read: 13. "**Independent Motorized Company Two**".

j. Para 13b, will now read:

b. **Deployment**. The Company will be deployed in Sector 2 after detailed recce by own troops and based on information received from MILOBs. Sector HQ will be located at KIGALI. A suggested deployment is shown at Annex B.

k. Para 13 c(2) will now read " (2) **Phase-II**. Deploy as per plan in Sector 2.

l. Para 14 will now read as follows:

14. **Independent Motorized Company Three**

a. **Grouping**. As per UN Table of Organization and equipment (max strength 200 personnel).

b. **Deployment**. The Company will be deployed in Sector 1 after detailed recce by own troops and based on information received from MILOBs. Sector HQ will be located at BYUMBA. A suggested deployment is shown at Annex B.

c. **Tasks**.

(1) **Phases I**. Carry out necessary ground recce prior to commencing Phase-II.

UN SECRET

(2) Phase-II. Deploy as per plan in Sector 1.

(3) Phase-III

- (a) Be fully operational.
- (b) Provide armed escorts on requirement.
- (c) Establish safe haven areas for displaced persons and secure these camps by static guards/mobile patrolling.
- (d) Conduct exchange of refugees/displaced persons on orders from Force HQ Humanitarian Cell.
- (e) Provide escorts on order to provide security to humanitarian aid convoys and distribution points.
- (f) Participate in security operations with local authorities such as Communal Police and Gendarmerie.
- (g) Undertake, control measures (road blocks, cordon and search, etc) in conjunction with local authorities.
- (h) Undertake deterrent operations with local authorities against illegal groups.
- (i) Control the main axis in Sector 1.
- (j) Monitor border crossing by refugees and armed individual/groups in own area of responsibility.
- (k) Provide security in large towns.
- (l) Protect airfield/strip(s) in own area.
- (m) Detain/arrest any suspected individual/groups and hand them over to local authority.

UN SECRET

(n) Monitor/guard RPF sites in own area.

(o) Guard UN installations in own area.

m. Change subsequent paras as follows:

- (1) Para 14 to Para 15.
- (2) Para 15 to Para 16.
- (3) Para 16 to Para 17.
- (4) Para 17 to Para 18.
- (5) Para 18 to Para 19.
- (6) Para 19 to Para 20.
- (7) Para 20 to Para 21.
- (8) Para 21 to Para 22.
- (9) Para 22 to Para 23.
- (10) Para 23 to Para 24.
- (11) Para 24 to Para 25.
- (12) Para 25 to Para 26.
- (13) Para 26 to Para 27.
- (14) Para 27 to Para 28.
- (15) Para 28 to Para 29 (Note change in bdry between Sector 4B and 4A).
- (16) Para 29 to Para 30.
- (17) Para 30 to Para 31.
- (18) Para 31 to Para 32.
- (19) Para 32 to Para 33.
- (20) Para 33 to Para 34.
- (21) Para 34 to Para 35.

UN SECRET

- (22) Para 35 to Para 36.
- (23) Para 36 to Para 37.
- (24) Para 37 to Para 38.
- (25) Para 38 to Para 39.
- (26) Para 39 to Para 40.
- (27) Para 40 to Para 41.
- (28) Para 41 to Para 42.

o. All other paragraphs of Reference A remain unchanged.

p. In the Distribution please insert "Mechanized Bn 3 after Mechanized Bn 2.

2. All are requested to make the necessary amendments.

  
RA DALLAIRE  
Maj Gen  
Force Commander

Annex:

B. Revised Inter Battalion Boundaries.

Distribution:

External:

Action:	<u>Copy No</u>
MILOB GP HQ	1
GHANBATT	2
Mechanized Bn 2	3
Mechanized Bn 3	4
Motorized Bn	5
Indep Motorized Coy 1	6
Indep Motorized Coy 2	7
Indep Motorized Coy 3	8

UN SECRET

Force Engr Coy	9
Force Sig Sqn	10
Force Field Hospital	11
UNCIVPOL	12

Information:

UNDPKO ( Mission Planing Service )	13
French Coalition Force	14

Internal:

Action:

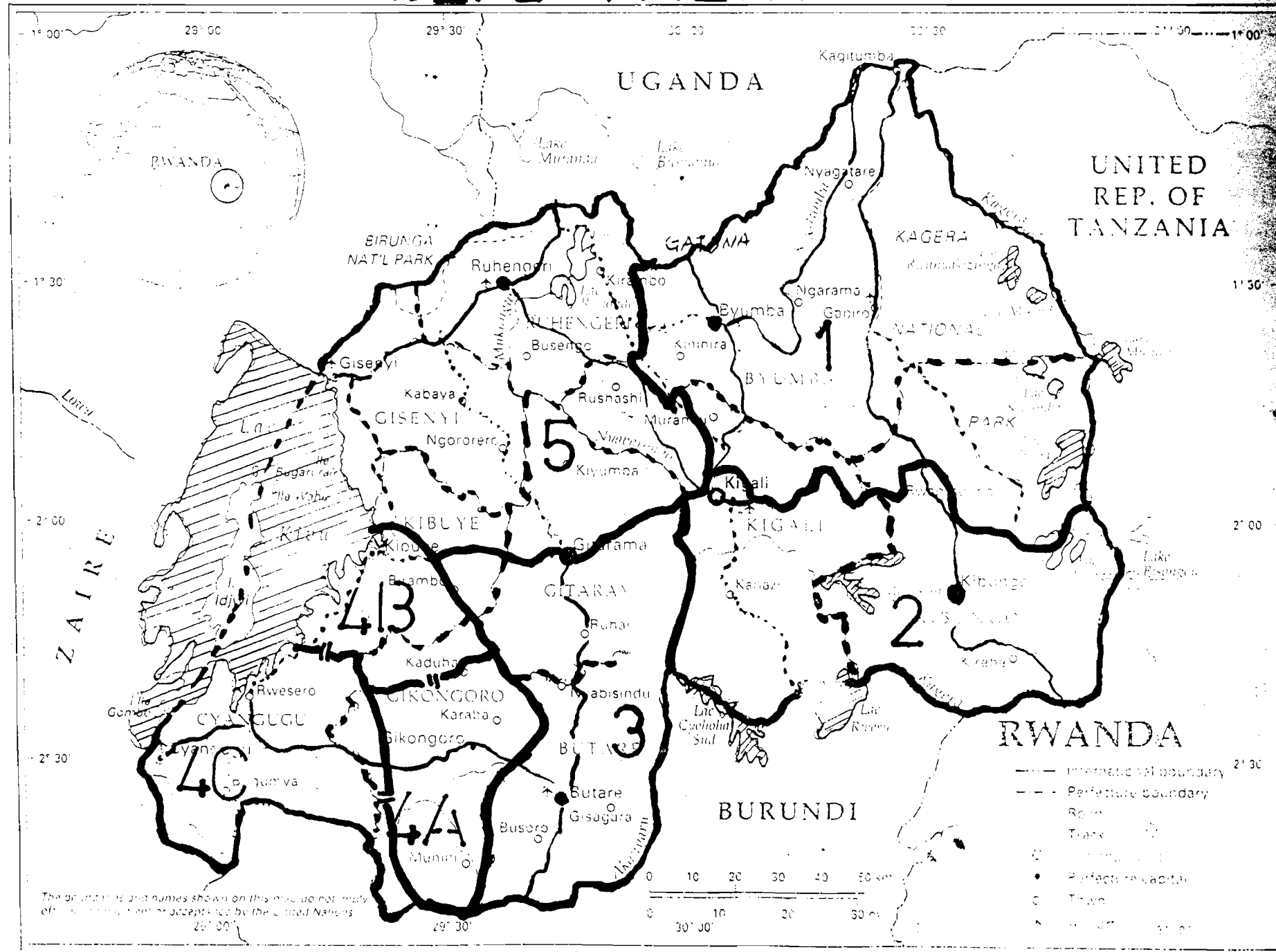
DFC	15
CAO	16
COO	17
HAC	18
C Plans	19
C Log O	20
CMPO	21
FSO	22
Camp Comdt	23

Information:

SRSG's Office	24
File	25
Spare	26-31

# DEPLOYMENT

MODIFICATION NO. 1  
TO OPO 16 DATED 3 AUG 94



MAP NO. 3117 UNITED NATIONS  
DECEMBER 1982

NOTE: FOR EXACT BOUNDARY - DRAW TRACE FROM OPS ROOM

UN SECRET

Copy No. . of

UNAMIR  
FORCE HQ  
Kigali

25 July 94

3000.15 (Ops)

See Distribution:

SUBJECT: OPERATION ORDER NO. 16

References:

- A. Operation Order no 14 dated 23 June 94
- B. Operation Directive no 10 dated 18 July 94

SITUATION

1. Military. Overall military situation in RWANDA has greatly changed to a positive direction and in favour of Rwandese Patriotic Army (RPA). With the capture of GISENYI, the last stronghold of Rwandese Government Force (RGF) not under French coalition surveillance, RPA now controls entire country excluding Humanitarian Protection Zone (HPZ) at the South-West. However, a considerable number of ex-government forces and its associated elements are presently sheltered inside HPZ and also in GOMA and BUKAVU, border towns in ZAIRE. RPF declared a unilateral cease-fire on midnight 18/19 July 94. RGF also being not in a position to continue fighting any more, is likely to respond RPF action with favour. On the other hand, the French-led Coalition Force (FCF) is continuing to disarm members of militia and other illegal elements in addition to their humanitarian role. FCF's willingness to pull out by 22 August 1994 seems to be standing.
2. Political. Changes in military field is influencing political sector as well. The Broad Based Government of National Unity (BBGNU) has already been formed at CND Complex on 19 July 1994 with 22 ministers appointing Mr. PASTEUR BIZIMUNGU as the President, Maj Gen PAUL KAGAME as Vice President/ Defence Minister, Mr. FAUSTIN TWAGIRAMUNGU as Prime Minister and Colonel ALEXIS KANYARWENGE as Deputy Prime Minister of the country. This government has stated that it will be in the office for next five years and work to create a favourable atmosphere for next general election. It is expected that the principles outlined in ARUSHA PEACE AGREEMENT will be progressively materialised in near future.
3. Humanitarian. The rapidly changing situation in military and



UN SECRET

political arena has naturally been influencing and creating social problems. In front of the RPA advance, a huge portion of the population have been and still are fleeing towards ZAIRE causing an incredible exodus of refugees. It is estimated that GOMA, a small border town of ZAIRE currently holds over 1 million refugees which is constantly increasing. A great number of people have also taken shelter in HPZ. On the other hand, influx of large number of refugees from UGANDA has been noticed particularly in north-east. The potential for an even more serious disaster in the south west, should the over 2 million displaced persons flee through the forest to Cyangugu, Bukavu and Zaire, is very real and all stabilizing efforts must be made to halt this option.

4. UNAMIR. Changes in military, political and humanitarian aspect have also made UNAMIR to alter its working procedure. In general UNAMIR's job has become a lot more easier now. Under expanded mandate of Security Council, UNAMIR is now expected to deploy overwhelming force in RWANDA with an aim to contribute largely in military, political and humanitarian fields.

MISSION

5. The mission of UNAMIR is to implement the cease fire monitoring, to replace the French led Coalition Force in the Humanitarian Protection Zone by 22 August 94, and assist in the security and support of humanitarian efforts with a view to bring lasting peace in RWANDA.

EXECUTION

6. Concept of Operations

a. Under such multidimensional and variable scenario, UNAMIR greatly needs to re-adjust its modus-operandi and the process is already ongoing. It now requires to conduct a full scale "Relief in Place" operation to replace the French led Coalition Forces in HPZ and deploy UNAMIR forces including MILOBs and CIVPOLs throughout RWANDA. It is of imperative importance that once deployed, UNAMIR forces not only be overwhelming in strength, but also be able to demonstrate determination to effectively use force (of course, minimum required) once need arises. This is particularly true for Sector 4. Confidence building activities among the population, extensive assistance in carrying out humanitarian tasks by different agencies, monitoring cease-fire, assisting in formation and continuation of a government of national unity and subsequent transition to peace in RWANDA is also of obvious importance.

b. UNAMIR forces engaged in the Relief in Place operation

UN SECRET

in sector 4 only will work under Chapter VII during Phase-II (Phases are described later). All other activities will be conducted under Chapter VI.

c. Three Infantry battalions (two mechanized and one motorized), three Independent Motorized Companies and one composite Engineer Company, one HQ and Signal Squadron, one Composite Helicopter and Fixed Wing Squadron, one Transport Company and a Field Hospital along with UNMOs and CIVPOLs will be deployed. Each battalion will be structured in three-line companies and a combat-support coy which is to include a mortar platoon, an assault pioneer platoon and a recce platoon with snipers. All infantry battalions will be deployed in Sector-4 ; only sector being divided into Sub-Sectors A, B and C. Three independent Infantry companies will be deployed in Sectors 2, 3 and 5. Sector 1 will have the composite Engineer Company deployed (see annex A). Besides, all Sectors and Sub-Sectors will have MILOBs and CIVPOL deployed.

d. GHANBATT is presently operating in KIGALI and expected to be a fully equipped 800 men strong Mechanized Infantry Battalion with M113 APC. Priorities of the deployment effort will be the replacement of FCF first by GHANBATT at Sector 4A. Sector 4B and Sector 4C will have one Mechanized Battalion and one Motorized Battalion respectively. Deployment of Independent Infantry Companies including composite Engineer Company will then follow with priority to sector 5. MILOBs and UNCIVPOL will be deployed in all Sectors/ Sub-Sectors prior and during the deployment of formed force.

e. The critical element that must be maintained under constant monitoring is the French/RPA possible confrontation. The extensive deployment of liaison teams between the FCF HQ and the UNAMIR Force HQ, the daily personal contacts between personnel of Operation TURQUOISE and UNAMIR senior staff (OPS) and the commanders are being well maintained and have proved to be effective. The transparency of the relations between the FCF and UNAMIR before the RPA, the timely passage and follow-up of operational and humanitarian information among all these through UNAMIR's pivotal role, the immediate deployment of MILOB teams to Ops TURQUOISE Bn HQs in Sector 4 for the monitoring of the on-going French actions there-in, and partly the maintenance of even tenuous links with the RGF through our GOMA Liaison Team. All these actions guide our near-term operations.

7. **Deployment.** The overall deployment will be conducted in four phases as follows.

UN SECRET

a. Phase-I. Deployment of MILOB teams to Bn HQs in Sector-4. The continuing deployment of MILOBs in sectors 1 and 2. The patrolling along HPZ border in sectors 3 and 5.

b. Phase-II.

(1) Relief in Place Operation. Relief in Place operation with a view to replace FCF in Sector 4 by UNAMIR troops. In that GHANBATT (Bn+) will deploy at Sector 4A, One Mechanized Infantry Battalion (Bn-) at Sector 4B and one Motorized Infantry Battalion at Sector 4C. MILOB and CIVPOLs will also be deployed per sub sectors. Relief in Place Operation is normally carried out between forces under unified command. In this situation the operation will be carried out between FCF and UNAMIR forces under different command. As such prior coordination and detailed discussion between the FCF and UNAMIR forces at all levels must be carried out to successfully conduct the relief in place operation. However following guidelines are given for planning:

(a) Timing. Relief in Place to begin by 31 July 94 (move of advance/recce party) and completed by 22 August 94.

(b) Route

i. For Sector 4A. KIGALI-GITARAMA-BUTARE-GIKONGORO.

ii. For Sector 4B. KIGALI-GITARAMA-KIBUYE.

iii. For Sector 4C. KIGALI-GITARAMA-BUTARE-GIKONGORO-CYANGUGU.

(c) Report Line

i. For Sectors 4A and 4B. Eastern line of HPZ.

ii. For Sector 4C. Eastern boundary of own Sector.

(2) At the same time, deployment of one Engineer Company in Sector 1, three Independent Infantry Companies at Sectors 2, 3 and 5 will continue accompanied by deployment of supporting elements, UNMOs and UNCIVPOL. Platoon in sector 5 will be relieved by Coy on a priority basis.

UN SECRET

c. **Phase-III.** Takeover from the FCF by UNAMIR in Sector 4 completed and all UNAMIR forces in all Sectors become fully operational.

d. **Phase-IV.** Handing over responsibilities of Sector 4 to Rwandese Government Forces, withdrawal of Infantry Bns in sector 4 except for Motorized Bn which will deploy throughout sector 4.

e. The essence of the deployment is based on the flexibility of concentrating forces for the humanitarian security or support tasks and being able to monitor an eventual cease-fire. Protected sites will be constituted through armed/formed elements of the force at locations where Rwandese are in need of security, be they isolated pockets in and around built-up areas, or temporary displaced persons camps, or more permanent/settled refugee camps. The mobility and protection afforded the Battalions and the inherent flexibility of the MILOBs permit convoy escorts, quick re-deployments to threatening situations, temporary security sites at distribution points, secure transfer by vehicle or on foot of persons returning to their places of origin. These activities will be directed from either force level decisions from within the Sectors or in transit between sectors. Routine monitoring/patrolling will be implemented in each Sector in complete coordination between formed troops (Battalions), MILOB HQs, CIVPOL HQs, FCF, RGF and RPA, dependant on threat.

8. **GHANBATT.**

a. **Grouping.** Full strength of 800 personnel and 50 APCs. One Mechanized Company attached from Mechanized Battalion Two of Sector 4B.

b. **Deployment.** Will deploy its Companies in Sector 4A area after carrying out detail recce and on getting report from MILOBs. A suggested deployment of the Battalion with HQ at GIKONGORO is shown at Annex B.

c. **Tasks.**

(1) **Phases I.** Carry out necessary ground recce prior to commencing Phase-II. Send advance party in your sector by 31 July 94.

(2) **Phase-II.**

(a) Conduct "RELIEF IN PLACE" operation and deploy as per plan after replacing French troops in Sector 4A.

UN SECRET

(b) Deploy 2 x Coys with Bn HQ (Main) in Sector 4A by 7 Aug 94.

(c) Continue to provide 1 x Coy in KIGALI with Bn HQ (Rear).

(3) **Phase-III**

(a) Be fully operational.

(b) Provide armed escorts on requirement.

(c) Establish safe haven areas for displaced persons and secure these camps by static guards/mobile patrolling.

(d) Conduct exchange of refugees/displaced persons on orders from Force HQ Humanitarian Cell.

(e) Provide escorts on order to render security to humanitarian aid convoys and distribution points.

(f) Participate in security operations with local authorities such as Communal Police and Gendarmerie.

(g) Undertake, control measures (road blocks, cordon and search, etc) in conjunction with local authorities.

(h) Undertake deterrent operations with local authorities against illegal groups.

(i) Monitor border crossing by refugees and armed individual/groups in own area of responsibility.

(j) Control the main axis in Sector 4A.

(k) Monitor Eastern boundary of HPZ in own area of responsibility.

(l) Provide security in large towns.

(m) Protect airfield/ strips(s) in own area.

(n) Ensure that RGF troops are not in defensive position.

(o) Detain /arrest any suspected individual/

groups and hand them over to local authority.

(p) Guard UN installations in own area.

(q) Maintain close liaison with FCF till their departure.

(4) Phase-IV. Handover all responsibilities to Rwandese Armed Forces.

9. Mechanized Battalion Two.

a. Grouping. As per UN Table of Organization and equipment (approximate strength 800 personnel). One Mechanized Company detached to GHANBATT.

b. Deployment. Will deploy Companies within Sector 4B area after detailed recce and after getting report from MILOBs. Sector HQ to be located at KIBUYE. A suggested deployment is shown at annex B.

c. Tasks

(1) Phases I. Carry out necessary ground recce prior to commencing Phase-II.

(2) Phase-II. Conduct "RELIEF IN PLACE" operation and deploy as per plan after replacing French troops in Sector 4B.

(3) Phase-III

(a) Be fully operational.

(b) Provide armed escorts on requirement.

(c) Establish safe haven areas for displaced persons and secure these camps by static guards/mobile patrolling.

(d) Conduct exchange of refugees/displaced persons on orders from Force HQ Humanitarian Cell.

(e) Provide escorts on order to provide security to humanitarian aid convoys and distribution points.

(f) Participate in security operations with local authorities such as Communal Police and Gendarmerie.

UN SECRET

- (g) Undertake, control measures (road blocks, cordon and search, etc) in conjunction with local authorities.
- (h) Undertake deterrent operations with local authorities against illegal groups.
- (i) Control the main axis in Sector 4B.
- (j) Monitor Eastern boundary of HPZ in own area of responsibility.
- (k) Monitor border crossing by refugees and armed individual/groups in own area of responsibility.
- (l) Provide security in large towns.
- (m) Protect airfield/strip(s) in own area.
- (n) Ensure that RGF troops are not in defensive position.
- (o) Detain /arrest any suspected individual/groups and hand them over to local authority.
- (p) Guard UN installations in own area.
- (q) Maintain close liaison with French Forces till their departure.

(4) **Phase-IV.** Handover all responsibilities to Rwandese Armed Forces.

10. **Motorized Battalion**

a. **Grouping.** As per UN Table of Organization and equipment (approximate strength 800 personnel).

b. **Deployment.** The Battalion will be deployed at Sector 4C after detailed recce by own troops and based on information received from MILOBs. Sector HQ will be located at CYANGUGU. A suggested deployment is shown at annex B.

c. **Tasks**

(1) **Phases I.** Carry out necessary ground recce prior to commencing Phase-II.

(2) **Phase-II.** Conduct "RELIEF IN PLACE" operation and deploy as per plan after replacing French troops in

Sector 4C.

(3) **Phase-III**

- (a) Be fully operational.
- (b) Provide armed escorts on requirement.
- (c) Establish safe haven areas for displaced persons and secure these camps by static guards/mobile patrolling.
- (d) Conduct exchange of refugees/displaced persons on orders from Force HQ Humanitarian Cell.
- (e) Provide escorts on order to provide security to humanitarian aid convoys and distribution points.
- (f) Participate in security operations with local authorities such as Communal Police and Gendarmerie.
- (g) Undertake, control measures (road blocks, cordon and search, etc) in conjunction with local authorities.
- (h) Undertake deterrent operations with local authorities against illegal groups.
- (i) Control the main axis in Sector 4C.
- (j) Monitor border crossing by refugees and armed individual/groups in own area of responsibility.
- (k) Control and monitor all movements from Burundi to own area of responsibility.
- (l) Secure the road passing through the forest in the area of responsibility by patrolling.
- (m) Provide security in large towns.
- (n) Protect airfield/strip(s) in own area.
- (o) Ensure that RGF troops are not in defensive position.
- (p) Detain/arrest any suspected individual/groups and hand them over to local



authority.

(q) Guard UN installations in own area.

(r) Maintain close liaison with FCF till their departure.

(4) Phase-IV. Handover all responsibilities to Rwandese Armed Forces.

11. Independent Motorized Company One

a. Grouping. As per UN Table of Organization and equipment (maximum strength 200 personnel).

b. Deployment. The Company will be deployed at Sector 2 after detailed recce by own troops and based on information received from MILOBS. Sector HQ will be at KIGALI. A suggested deployment is shown at annex B.

c. Tasks

(1) Phases I. Carry out necessary ground recce prior to commencing Phase-II.

(2) Phase-II. Deploy as per plan in Sector 2.

(3) Phase-III

(a) Be fully operational.

(b) Provide armed escorts on requirement.

(c) Establish safe haven areas for displaced persons and secure these camps by static guards/mobile patrolling.

(d) Conduct exchange of refugees/displaced persons on orders from Force HQ Humanitarian Cell.

(e) Provide escorts on order to provide security to humanitarian aid convoys and distribution points.

(f) Participate in security operations with local authorities such as Communal Police and Gendarmerie.

(g) Undertake, control measures (road blocks, cordon and search, etc) in conjunction with local authorities.

UN SECRET

- (h) Undertake deterrent operations with local authorities against illegal groups.
- (i) Control the main axis in Sector 2.
- (j) Monitor border crossing by refugees and armed individual/groups in own area of responsibility.
- (k) Provide security in large towns.
- (l) Protect airfield/strip(s) in own area.
- (n) Detain /arrest any suspected individual/groups and hand them over to local authority.
- (o) Monitor/guard RPF sites in own area.
- (p) Guard UN installations in own area.

(4) Phase-IV. Handover all responsibilities to Rwandese Armed Forces.

12. Independent Motorized Company Two

a. Grouping. As per UN Table of Organization and equipment maximum strength 200 personnel).

b. Deployment. The Company will be deployed at Sector 3 after detailed recce by own troops and based on information received from MILOBs. Sector HQ will be located at GITARAMA. A suggested deployment is shown at annex B.

c. Tasks

- (1) Phases I. Carry out necessary ground recce prior to commencing Phase-II.
- (2) Phase-II. Deploy as per plan in Sector 3.
- (3) Phase-III
  - (a) Be fully operational.
  - (b) Provide armed escorts on requirement.
  - (c) Establish safe haven areas for displaced persons and secure these camps by static guards/mobile patrolling.
  - (d) Conduct exchange of refugees/displaced

UN SECRET

persons on orders from Force HQ Humanitarian Cell.

(e) Provide escorts on order to render security to humanitarian aid convoys and distribution points.

(f) Participate in security operations with local authorities such as Communal Police and Gendarmerie.

(g) Undertake, control measures (road blocks, cordon and search, etc) in conjunction with local authorities.

(h) Undertake deterrent operations with local authorities against illegal groups.

(i) Control the main axis in Sector 3.

(j) Help monitoring Eastern boundary of HPZ by troops deployed in Sector 4 by providing information of own area of responsibility.

(k) Monitor border crossing by refugees and armed individual/groups in own area of responsibility.

(l) Provide security in large towns.

(m) Protect airfield/strip(s) in own area.

(n) Detain/arrest any suspected individual/groups and hand them over to local authority.

(o) Monitor/guard RPF sites in own area.

(p) Guard UN installations in own area.

(4) Phase-IV. Handover all responsibilities to Rwandese Armed Forces.

13. Independent Motorized Company Three

a. Grouping. As per UN Table of Organization and equipment (maximum strength 200 personnel).

b. Deployment. The Company will be deployed in Sector 5 after detailed recce by own troops and based on information received from MILOBs. Sector HQ will be located at

RUHENGRI. A suggested deployment is shown at annex B.

c. Tasks

- (1) Phases I. Carry out necessary ground recce prior to commencing Phase-II.
- (2) Phase-II. Deploy as per plan in Sector 5 and relieve GHANBATT platoon.
- (3) Phase-III
  - (a) Be fully operational.
  - (b) Provide armed escorts on requirement.
  - (c) Establish safe haven areas for displaced persons and secure these camps by static guards/mobile patrolling.
  - (d) Conduct exchange of refugees/displaced persons on orders from Force HQ Humanitarian Cell.
  - (e) Provide escorts on order to provide security to humanitarian aid convoys and distribution points.
  - (f) Participate in security operations with local authorities such as Communal Police and Gendarmerie.
  - (g) Undertake, control measures (road blocks, cordon and search, etc) in conjunction with local authorities.
  - (h) Undertake deterrent operations with local authorities against illegal groups.
  - (i) Control the main axis in Sector 5.
  - (j) Render assistance to troops of Sector 4 by monitoring Northern boundary of HPZ in own area of responsibility.
  - (k) Monitor border crossing by refugees and armed individual/groups in own area of responsibility.
  - (l) Provide security in large towns.
  - (m) Protect airfield/strip(s) in own area.

(n) Detain/arrest any suspected individual/groups and hand them over to local authority.

(o) Monitor/guard RPF sites in own area.

(p) Guard UN installations in own area.

(4) **Phase-IV.** Handover all responsibilities to Rwandese Armed Forces.

14. **Force Engineer Coy**

a. **Grouping.** As per UN Table of Organization and equipment.

b. **Deployment.** The Company will be deployed at Sector 1 after detailed recce by own troops and based on information received from MILOBs. Sector HQ will be located at BYUMBA. A suggested deployment is shown at annex B.

c. **Tasks**

(1) **Phases I.** Carry out necessary ground recce prior to commencing Phase-II.

(2) **Phase-II.** Deploy in Sector 1 as per plan.

(3) **Phase-III**

(a) Plan and carry out mine clearing operation in own area .

(b) Carry out disposal of Explosive Ordnance Device (EOD) on order.

(c) Assist local Authority in building bridges/culverts.

(d) Render assistance to construction works in own area.

(e) Be fully operational.

(f) Provide armed escorts on requirement.

(g) Establish safe haven areas for displaced persons and secure these camps by static guards/mobile patrolling.

UN SECRET

(h) Purify water and distribute to the local population on requirement in RWANDA.

(i) Conduct exchange of refugees/displaced persons on orders from Force HQ Humanitarian Cell.

(j) Provide escorts on order to provide security to humanitarian aid convoys and distribution points.

(k) Participate in security operations with local authorities such as Communal Police and Gendarmerie.

(l) Undertake, control measures (road blocks, cordon and search, etc) in conjunction with local authorities.

(m) Undertake deterrent operations with local authorities against illegal groups.

(n) Control the main axis in Sector 1.

(o) Monitor border crossing by refugees and armed individual/groups in own area of responsibility.

(p) Provide security in large towns.

(q) Protect airfield/airstrip(s) in own area.

(r) Ensure that RGF troops are not in defensive position.

(s) Detain/arrest any suspected individual/groups and hand them over to local authority.

(t) Monitor/guard RPF sites in own area.

(u) Guard UN installations in own area.

(4) Phase-IV. Handover all responsibilities to Rwandese Armed Forces.

15. Force Signal Squadron

a. Grouping. As per UN Table of Organization and equipment approximate strength 440 personnel).

UN SECRET

b. Deployment. The Company will be deployed within Sector 2 and be located at AMAHORO STADIUM Complex in KIGALI.

c. Tasks (In All Phases)

- (1) Carry out tasks mentioned in the COMMs Instr 100.1/FC (Comms) dated 17 May 94.
- (2) Prepare and issue Sig Instructions as per OPO 16.
- (3) Provide own security at the Amahoro Stadium.
- (4) Be responsible for the administration of the Force HQ.

16. MILOB GROUP

a. Strength. 320 personnel by Phase II.

b. Location

- (1) MILOB GROUP HQ. Former SRSG's House, KIGALI.
- (2) MILOB Sector 1. HQ at BYUMBA.
- (3) MILOB Sector 2. HQ at Former MILOB GP HQ, KIGALI with some elements at KIBUNGO.
- (4) MILOB Sector 3. HQ at GITARAMA with some elements at BUTARE.
- (5) MILOB Sector 4
  - (a) Sector 4A. HQ at GIKONGORO.
  - (b) Sector 4B. HQ at KIBUYE.
  - (c) Sector 4C. HQ at CYANGUGU.
- (6) MILOB Sector 5. HQ at GISENYI to start with some elements at RUHENGIERI.
- (7) Force Humanitarian Cell. HQ at KIGALI.

c. Tasks

- (1) Phase-I.
  - (a) Organize the Sectors and deploy as per plan in all Sectors.

(b) Be fully operational.

(c) Carry out extensive ground recce, monitor social, political, military and security situation in own area of responsibility with a view to provide maximum information to formed forces before their deployment.

(2) Phases II and III

(a) Provide MILOB escorts to VIPs on requirement.

(b) Provide escorts to humanitarian aid convoys and distribution points.

(c) Assist and monitor conduct of exchanging refugees/ displaced persons and their return/resettlement.

(d) Constantly monitor security situation in own area.

(e) Monitor activities by all parties along boundary of HPZ in own area of responsibility (if applicable).

(f) Monitor border crossing by refugees and armed individual/groups in own area of responsibility.

(g) Monitor RPF sites in own area (if applicable).

(h) Coordinate with UNREO representatives attached to UNAMIR and ensure their coordination with all other NGOs working in RWANDA.

(i) Monitor the observance of the cease fire.

(j) Assist in the coordination of humanitarian assistance in conjunction with Humanitarian Relief Agencies.

(k) Investigate any case of violations in conjunction with local authorities through:

i. Mobile Patrolling.

ii. Static Check Points.

iii. Investigation of complaints.



UN SECRET

iv. Continuous Liaison with all parties.

(l) Investigate and report on any incidents of harassment of refugees/displaced persons by illegal gangs or individuals.

(m) Collect as much information as possible from border areas.

(3) Phase-IV. Cease all functioning.

17. CIVPOL.

a. Strength. 130 police officers under command of Force Commander. Will be under command CMO till strength is brought up to operational level.

b. Deployment. CIVPOL Sector will be with the MILOB Sectors. Their HQs will also be with MILOB Sector HQs.

c. Tasks

(1) Phase-I.

(a) Prepare for deployment after studying informations provided by MILOBs.

(b) Be prepared to assist BBGNU to build new Gendarmerie.

(2) Phases II and III

(a) Deploy police teams in Phase-II as per deployment plan.

(b) Monitor the process of the return of Rwandese refugees/displaced persons and their resettlement.

(c) Monitor the police/gendarmerie security situation.

(d) Investigate any cases of violations in conjunction with local authorities through:

i. Mobile patrolling.

ii. Investigation of complaints.

iii. Continuous Liaison with all the parties.

iv. Investigate and report on any incidents of harassment of refugees/displaced persons by illegal gangs Or individuals.

v. Investigate cases of human rights violations.

vi. Assist local authorities in maintaining law and order.

vii. Assist MILOBs and ground troops in police matters.

(3) Phase-IV. Handover all police responsibilities to local law enforcing agencies (such as Gendarmerie once formed/ organized).

18. Force Transport Company

a. Grouping. As per UN Table of Organization and equipment (maximum of 60 major vehicles and 200 personnel).

b. Deployment. The Company will be deployed at Sector 2 in RWANDEX complex.

c. Tasks

(1) Phases I. Carry out necessary ground recce prior to commencing Phase-II.

(2) Phases II and III

(a) Deploy in Ops Area as per plan.

(b) Provide transport support.

(c) Provide upto second line repair and maintenance facilities of transport.

(3) Phase IV. Cease all function on order from Force HQ.

19. Force Composite Helicopter and Fixed Wing Squadron

a. Grouping. As per UN Table of Organization and equipment (capable of lifting 250 personnel at one time).

b. Deployment. Wing HQ to be located at KIA.

c. Tasks

(1) Be prepared to carry out CASEVAC on order.

UN SECRET

- (2) Be prepared to perform air reconnaissance on orders.
- (3) Remain standby to lift up to a coy of troops for rapid deployment.
- (4) Be prepared to provide close support to ground troops.
- (5) Be prepared to lift humanitarian aid to urgently required areas and where roads are not passable.
- (6) Provide logistic support to ground troops on orders.
- (7) Be prepared to carry out command and liaison tasks on order.
- (8) Be prepared to provide helicopter support to UNAMIR.
- (9) Overwatch/monitor convoy and provide security/protection on order.

20. Force Field Hospital

- a. Grouping. As per UN Table of Organization and equipment (approximate 300 personnel including self defence element).
- b. Deployment. Establish Field Hospital at King Faisal Hospital, KIGALI.
- c. Tasks (All Phases)
  - (1) Provide medical treatment including limited surgery to all UNAMIR personnel.
  - (2) Provide medical treatment to local population in emergency case to a limited scale.
  - (3) Establish a Hospital with 100 beds.

Coordinating Instructions.

21. Timings

- a. Phase-I. To begin on 26 July 94.
- b. Phase-II. To begin on 31 July 94.
- c. Phase-III. To begin on 22 August 94.

- d. Phase IV. Will be intimated later.
  - e. All Tac HQs to be operational 5 days after arrival of advance party.
  - f. Main HQs to be operational 3 days after the arrival of the last flight.
  - g. Battalions/ Companies to be operational within 7 days after the deployment of its total strength.
22. Deployment Adjustments
- (a) Depending on the situation/information later, Force HQ is to be notified of any adjustments/modification to Sector plan outlined in orders.
  - (b) Sector final deployment details to be submitted to Force HQ 7 days on arrival of last chalk.
23. Reinforcements. Battalion is to maintain an adequate Rapid Reaction Force (RRF) capable of influencing critical unforeseen situations.
24. OPs/CHPs. The establishment of OPs and CHPs must be of high professional standards.
25. Improvisation. Improvisation is essential in area ops due to lack of adequate logistics.
26. Explosive Ordnance Devices. All unexploded EODs and unsafe ammo should be disposed fwd to Force Engineer Company who will take necessary action after intimation to Force HQ for necessary disposal action.
27. Reports.
- (a) Daily SITREPS covering the past 24 hrs are to be submitted to Force HQ by 1830 hrs each day.
  - (b) Weekly SITREP/INTREP to be submitted by 0700 hrs on Monday.
  - (c) Other reports (SHOOTREPS, VIREPS, INCREPS) are to be submitted as soon as occurrence takes place.
28. Inter Sector Boundaries. Annex B.
29. Rules of Engagement. Being issued separately.

SERVICE SUPPORT.


UN SECRET

30. Food/Water. 10 days min rations/water to be maintained at all levels.
31. Accommodation. Incoming units to bring own tentage.
32. Dress. As per UNAMIR dress instructions. Flak jackets will be worn in sectors 3, 4 and 5 until further order.
33. Weapons/Ammo. Troops of formed units will carry their personal weapons and first line ammo at all times. MILOBs will remain unarmed.
34. Medical. The Force Base Hospital will be located at KIGALI Hospital in KIGALI. Until established, all must be medically self-sufficient.
35. Medevac. All serious medical cases will be evacuated to the Force Field Hospital.
36. Force Log Base. To be loc at old Bangladesh Log Base - Industrial Area.
37. KIGALI Airhead Log Office. Office to be based in warehouse at KIA.
38. Log Instruction. Detail Log instructions to be issued by C Log O

COMMAND AND SIGNAL

39. Locations of HQ
  - a. Force HQ - AMAHORO HOTEL.
  - b. Tac HQ - BUTARE.
  - c. GHANBATT HQ - GIKONGORO.
  - d. Mechanized Battalion Two HQ - KIBUYE.
  - e. Motorized Battalion HQ - CYANGUGU.
  - f. Motorized Company One HQ - KIGALI.
  - g. Motorized Company Two HQ - GITARAMA.
  - h. Motorized Company Three HQ - RUHENGIRI.
  - i. Force Engineer Company HQ - BYUMBA.
  - j. Transport and Logistic Base HQ - RWANDEX.

40. Communication. Signal instructions being issued separately.
41. Detailed Orders. All under command units of the Force to issue detailed order.



R A DALLAIRE  
Maj Gen  
Force Commander

Annexes

- A. Grouping.
- B. Inter Sector Boundaries and Suggested Deployment.
- C. SOP for Road Moves.

Distribution:

External:

Action:	<u>Copy No</u>
MILOB GP HQ	1
GHANBATT	2
Mechanized Bn 2	3
Motorized Bn 1	4
Indep Mor Coy 1	5
Indep Mor Coy 2	6
Indep Mor Coy 3	7
Force Engr Coy	8
Force Sig Sqn	9
Force Field Hospital	10
UNCIVPOL	11

Information:

UNDPKO ( Mission Planing Service )	12
French Coalition Force	13

Internal:

UN SECRET

Action:

DFC	14
CAO	15
COO	16
HAC	17
C Plans	18
C Log O	19
CMPO	20
FSO	21
Camp Comdt	22

Information:

SRSG's Office	23
File	24
Spare	25-30

UN SECRET

Annex A  
To OPO 16  
Dated 25 Jul 94

GROUPING

1. GHANBATT

- a. Bn HQ.
- b. 4 x Mech Coys (1 x Mech Coy attached from Mech Bn Two).
- c. 1 x Combat Support Coy (Mor Pl, Recce Pl, Asslt Pnr Pl)
- d. 1 x Support Coy (Maint Pl, MT Platoon, QM Pl).

2. Mech Bn Two

- a. Bn HQ.
- b. 2 x Mech Coys (1 x Mech Coy detached to GHANBATT).
- c. 1 x Combat Support Coy (Mor Pl, Recce Pl, Asslt Pnr Pl).
- d. 1 x Support Coy (Maint Pl, MT Pl, QM Pl).

3. Motorized Bn One

- a. Bn HQ.
- b. 3 x Rifle Coys.
- c. 1 x Combat Support Coy (Mor Pl, Recce Pl, Asslt Pnr Pl).
- d. 1 x Support Coy.

4. Motorized Bn Two

- a. Bn HQ.
- b. 3 x Rifle Coys (On 3/5 Ton Trucks).
- c. 1 x Combat Support Coy (Mor Pl, Recce Pl, Asslt Pnr Pl).
- d. 1 x Support Coy.



UN SECRET

5. Indep Mor Coy 1. Integral
6. Indep Mor Coy 2. Integral
7. Indep Mor Coy 3. Integral
8. Force Signal Squadron
  - a. Sqn HQ.
  - b. 1 x Radio Troop.
  - c. 1 x Access Troop.
  - d. 1 x Support Troop.
  - e. 1 x Defence Coy.
9. Force Engr Coy
  - a. Coy HQ.
  - b. Construction Pl.
  - c. Fd Engr Pl.
  - d. Plant/Resources Pl.
  - e. Workshop Pl.
10. Force Medical Coy
  - a. Coy HQ.
  - b. 1 x Out Patients Section.
  - c. 1 x Amb Section.
  - d. 1 x Surgery Section.
  - e. 1 x Ward Section.
  - f. 1 x Dental Section.
11. MILOB GROUP
  - a. MILOB Group HQ.
  - b. MILOB Sector HQ.
  - c. Mi
12. Forec Helicopter Squadron

UN SECRET

- a. Recce Flight - 8 x Lt Hels.
  - b. Troop Lift Flight - 8 x Utility Hels.
13. Force Military Police Coy.
- a. Coy HQ.
  - b. 2 x Military Police Platoons.
14. UNCIVPOL. Teams in sectors.

ANXB

TO OPO-16



NOTE: ~~Control~~ <sup>Control</sup> ~~has~~ <sup>has</sup> ~~been~~ <sup>been</sup> ~~drawn~~ <sup>drawn</sup> the trace from Ops Room

Annex C  
To OPO 16  
Dated 25 July 94

STANDING OPERATING PROCEDURES (SOP)  
UNMAIR ROAD MOVES

GENERAL

1. These SOP are designed to ensure that all UNAMIR convoys operate under a clear and unambiguous guidelines to ensure their safety and efficiency within RWANDA and any of the neighboring countries. Under the present conditions, these guidelines cover all aspects and to that end, common sense and good judgement are essential.

AIM

2. The aim of this SOP is to provide convoy commanders with direction and to also outline his duties in order to conduct the safe movement of convoys in and outside RWANDA.

3. TERMS OF REFERENCE

a. CONVOY

(1) All UNAMIR vehicles carrying Humanitarian Aid, with the intention to off load, or empty with the intention to load at a wirehouse.

(2) All military resupply, rotation and/or deployment movement of more than three (3) vehicles.

(3) Every single vehicle movement that is oversized and/or carrying a special or dangerous road.

(4) Convoy should not exceed 15 vehicles.

b. Convoy commander is responsible for the discipline of the drivers and the convoy. The documentation of the vehicles and load as well as any negotiations on aspects affecting the convoy. The convoy commander will ensure any even facility during any critical time.

c. DOCUMENT. Means the list of the convoy personnel, UN ID card, general description of weapon carried, general description of ammunitions carried, list of military vehicles and general description per veh.

d. BORDER CROSSING POINT. The dividing point between two

UN RESTRICTED

states.

e. CHECK POINT (WF). A control point established by control movement with in AOR>

f. REPORT LINES. The establishment of permanent and visibly marked report lines has greatly enhanced the ability of the operations rooms to monitor and control convoys. All convoys crossing Report Lines to report to Ops Room.

ROUTES

4. These will be determined in movement instructions prior to the move, depending on the situation at the time.

SPEED

5. The following speed limits will be strictly adhered to:

a. Day

- (1) First Class Roads - Not more than 60km/hr.
- (2) Second Class Roads - Not more than 50km/hr.
- (3) Hilly Areas - Not more than 40km/hr.
- (4) Through Built up - Same as (3) above.

b. Night. Unless emergency, no move will be undertaken during night. However, if under taken, speed limits are as under:

- (1) First Class Roads - 60km/hr.
- (2) Second Class Roads - 50km/hr.
- (3) Hilly Areas - Same as (2) above.
- (4) Built up Areas - Same as (2) above.

VEHICLE DENSITY

6. The gap between vehicles will be as follows:

- a. Day. 80-100 meters between vehicles.
- b. Night. 25-40 meters between vehicles.
- c. Hilly Terrain. 30-50 meters between vehicles.

UN RESTRICTED

DOCUMENTS

7. Personnel travelling in the convoy will carry their ID cards at all times. Drivers will carry their Drivers Permits and Vehicle Trip Tickets in addition to their ID cards.

8. For convoys proceeding outside RWANDA, all will carry their passports and International Vaccination Certificates in addition to the documents mentioned in paragraph 6 above.

DRESS

9. Dress will be as per UNAMIR dress regulations. Flak jackets and steel helmets will be worn by all.

WEAPONS

10. Personnel weapons will be carried by all military personnel (those in possession of weapons) on convoys within RWANDA. For convoys going outside RWANDA, all personnel weapons will be handed over to personnel at the last UNAMIR position closest to the border. The convoy commander will ensure that the weapons are properly received and documented. Weapons will be collected on the return trip into RWANDA.

SAFETY MEASURES

11. Before Move. All vehicles in the convoy needs to have detail checking by CTO/Unit MT. Following to be ensured:

- a. Load Table for each vehicle has to be prepared and load the vehicle accordingly.
- b. All vehicle should not be over loaded. Some space to be kept for unforcene.
- c. UNAMIR MT Unit must ensure all the cargo are loaded properly and in cases sufficient lashing should be done.
- d. CTO/Unit vehicle mechanic to inspect all the vehicles before the move.
- e. All drivers should be physically fit.
- f. CTO/Unit to detail a vehicle Technical Team for each convoy.
- g. Ensure sufficient fuel for the journey with the requisite reserve capacity and check the fitness of the vehicle.

12. During Move.

UN RESTRICTED

- a. Ensure that the convoy is properly manned and all personnel are correctly equipped to meet the task.
- b. Route should be maintain as per move plan.
- c. Vehicle should maintain speed and spacing.
- d. 360 degree observation must be guaranteed at all time.

ACTION AT HALTS

13. At short halts vehicles will park off the road. Convoy escorts will dismount and take position for all round defence.
14. At long halts, vehicles will be parked in a harbour area off the main road. The harbour area will be determined by the convoy commander.
15. Troops escorting the convoy will dismount and be deployed for all round defence of the barbour area.

POL

16. All vehicles will fill full tank before the start of the journey. All vehicles will carry 2 x spare jerricans, filled will be carried on all vehicles.

FIRST AID KIT

17. All vehicles will carry a first aid kit at all times.

18. DUTIES AND RESPONSIBILITIES

- a. Convoy Commander. The convoy commander is responsible for the safety and security of the convoy. When operating, his decision is final. However advice and assistance should be sought from higher HQ. The convoy commmander is responsible for:

- (1) Ensuring that the convoy is properly manned and that personnel are correctly equipped to that the task.
- (2) The behavior, conduct and security of convoy personnel, vehicles and equipment under the change of the convoy commander.
- (3) Route planning - convoy commander should use only authorised route, that have been fully evaluated and secured.
- (4) Briefing the convoy PRIOR to departure. The briefing should not be given by radio and should cove

UN RESTRICTED

the following points:

- (a) Route.
  - (b) Enroute weather/road condition.
  - (c) Security situation both general and local en route.
  - (d) Convoy marching order.
  - (e) Role of escorts and escort procedures.
  - (f) Safety measures.
  - (g) Action to be taken in the event of hostile action.
  - (h) Action to be taken in the event of a break down.
  - (i) Vehicle speeds and spacing.
  - (j) Radio procedure and action to be taken in the event of communication failure.
  - (k) Convoy chain of command.
- (5) Ensuring that all convoy personnel carry their UNAMIR ID cards and are properly dressed.
- (6) Ensuring that convoy vehicles are serviceable and have been inspected PRIOR to departure.
- (7) The safe loading and unloading of the convoy vehicles.
- (8) Maintain convoy speed, spacing, position of escort vehicles, communication, action on when coming under fire.
- (9) Checking that load manifests are correct and distributing them in accordance to vehicle availability.
- (10) Submit the convoy planning to the coordinating authority prior to move.
- (11) Submit the convoy report on completion of the tasks.
- (12) Ensure all accident reports are compiled and promptly submitted to the controlling authority.



UN RESTRICTED

(13) In the event of a security incident involving hostile action send an immediate incident report covering time, type and location of incident and ensure a detail report is prepared subsequently and submitted to the authority.

b. Deputy Convoy Commander. The role of the deputy convoy commander to assist the convoy commander in the execution of his duties, take over as convoy commander in case of convoy commander is sick or unable to perform his duties. The deputy convoy commander is to familiarize himself with the duties of the convoy commander and to advise him on all safe driving techniques. He should also ensure that all personnel driving vehicles know driving and aware of their duties.

c. Drivers

(1) To follow the instruction of the convoy commander at all times.

(2) To be responsible for the basic care, maintenance, cleanliness and good order of the vehicles in his charge.

(3) To be responsible for the loading and unloading of the vehicle and for the security of the road whilst en route.

(4) Conduct daily vehicle checks and take the necessary remedial actions.

ACTION ON BREAKDOWN

19. In case of a breakdown en route, mechanics accompanying the convoy will attempt to rectify the fault. Should the repairs be beyond the mechanics, vehicles will be parked off the road and secured before leaving it. Action should also be taken to immobilize the vehicle before being left behind. This is to prevent the vehicle falling into the wrong hands.

20. For convoys travelling outside RWANDA, all efforts must be made to repair the vehicle before moving.

TRAFFIC REGULATIONS

21. Drivers of vehicles will obey the traffic regulations pertaining to the country the convoy is driving in.

TRAFFIC ACCIDENTS

22. The following action will be taken by the convoy commander. Should any vehicle in the convoy be involved in an accident:

UN RESTRICTED

- a. Administer First aid to any injured parties.
- b. Evacuate wounded to the nearest hospital.
- c. Make a report to the nearest local police (UNAMIR).
- d. Report by radio (if possible) to UNAMIR Military Police/Ops Room.
- e. Ensure all measurements are taken before the convoy proceeds.
- f. Should the above mentioned procedure delay the convoy, some troops and another vehicle are left at the scene to witness the police procedures.
- g. The vehicle should be driven away if possible. Should this not be possible, the vehicle should be moved off the road before the convoy proceeds.
- h. Submit a written report to the Military Police/UNCIVPOL and the CTO on the return of the convoy to its destination.

ACTION WHEN FIRED UPON

23. The following actions will be taken by the convoy commander should the convoy be fired upon:

- a. Move fast and get out of the ambush area.
- b. Give a sitrep by radio if within range.
- c. The convoy commander will halt the convoy at a safe distance from the area, take up defensive positions and to check if there are any injuries or damages.
- d. If there are no injuries, the convoy will proceed and a full report submitted to the COO on reaching your destination. The report will include the following:
  - (1) Time and location of incident.
  - (2) A brief description of the incident.
  - (3) Action taken.
  - (4) Possible reasons and which party fired at the convoy.
- e. Should there be injuries, first aid will be administered and the injured quickly evacuated to the nearest hospital and a full reported as per sub para 'c'

UN RESTRICTED

above.

24. Should the situation demand the return of fire, the UNAMIR Rules of Engagement will apply. Remember to stay calm at all times.

ACTION AT CHECK POINTS

25. The following procedure will be followed at Check Points:

a. All personnel on board the vehicles must be prepared to identify themselves with their ID cards. Under no circumstances should ID cards be surrendered.

b. Vehicles in the convoy will maintain 10-15 meters distance.

c. Drivers will keep their engines running.

d. Remember to be polite and calm and cheerful at all times.

COMMUNICATIONS

26. All vehicles in the convoy should remain in radio contact with each other. The convoy commander will issue call signs before the move commences. The convoy commander will remain in radio contact with the HQ (Ops Room) at all times. The Simplex Channels (1-5) will be used by vehicles in the convoy in order not to overburden the operational channel. Comm must be maintained all time between first and last vehicle. Convoy commander to be in comm with duty officer throughout the move. SDO in his brief will give in channel.

22 Jul 94

SECTION 9 :  
OPERATIONAL DIRECTIVE NO. 02  
RULES OF ENGAGEMENT

PART 1

1. The conduct of military operations is controlled and regulated by the provision of international and national law, conventions and precedence. In the case of a United Nations (UN) conducted operation, it is the responsibility of the UN to set the parameters within which UN Forces will operate. Rules of Engagement (ROE) are the means by which the UN can provide to commanders at all levels the political and legal direction and guidance on the use of Force by UN personnel. ROE are drafted by the Force Commander, but are approved by the UN and may only be changed with UN authority.

2. These UNAMIR ROE are provided for UN Forces operating under the auspices of UN Security Council Resolution 925 dated 8 June 1994, which states in paragraph 4 that:

"... the consolidated mandate of UNAMIR includes the following:

- (a) To contribute to the security and protection of displaced persons, refugees and civilians at risk in Rwanda, including through the establishment and maintenance where feasible, of secure humanitarian areas;
- (b) To provide security and support for the distribution of relief supplies and humanitarian relief operations; and
- (c) To act as an intermediary between the parties in an attempt to secure their agreement to a ceasefire;....".

Paragraph 5 of the resolution particularly recognizes that:

"UNAMIR may be required to take action in self-defence against persons or groups who threaten protected sites and populations, United Nations and other humanitarian personnel or the means of delivery and distribution of humanitarian relief."

3. UNAMIR is a peacekeeping force without commitment to either party in the Rwandese civil war. Under the terms of the Arusha Peace Agreement and the UN Security Council Resolution mandates, UNAMIR has a commitment to all parties to assist them to achieve peace. Impartiality is the key and all UNAMIR's actions must be aimed at ensuring the furtherance of this objective. However, circumstances could arise where the use of force by UNAMIR personnel would be necessary and justified.

PART 11

DEFINITIONS

4. The following key definitions must be clearly understood by all personnel in UNAMIR:

a. Force. The use of physical means to impose one's will. Military force is the use of the physical means provided by formed, armed and disciplined bodies of troops under unified command to achieve the same end and generally implies the potential to use significant levels of violence.

b. Self-Defence. The use of force to protect:

- (1) oneself and the personnel in one's unit,
  - (2) other UNAMIR military or civilian personnel,
  - (3) non-UNAMIR humanitarian aid personnel,
  - (4) displaced persons, refugees and civilians in sites or among populations under the protection of UNAMIR forces, or
  - (5) other UN-authorized military or civilian personnel,
- against a hostile act or hostile intent, where there is no other choice or time for deliberation.

c. Hostile Act. A hostile act is an attack or other use of force against those entities listed in paragraph 4.b. above.

d. Hostile Intent. Hostile intent is the threat of the imminent use of force against those entities listed in paragraph 4.b. above.

UN RESTRICTED

- e. Minimum Force. The minimum degree of authorized force which is necessary, reasonable and lawful in the circumstances.
- f. Collateral Damage. Damage to persons or property adjacent to, but not part of an authorized target.
- g. Non-deadly force. Any physical means of forcing compliance that does not pose a risk of death or serious bodily harm to the individual against whom the force is directed. This is usually through the use of physical force short of the use of firearms or other deadly weapons. Examples include: pushing and lesser forms of striking or hitting, and physically or mechanically restraining persons. Warning shots are non-deadly force, even though they involve the use of firearms.
- h. Deadly Force. This is the ultimate degree of force. Deadly force is that level of force which is intended or is likely to cause death or serious bodily harm regardless of whether death or serious bodily harm actually results.

PART 111

INSTRUCTIONS ON THE USE OF FORCE

APPLICABILITY

5. The ROE stated in this directive apply to all personnel provided by nations participating in UNAMIR under the provisions of UN Security Council Resolution 925 dated 8 June 1994. These ROE are written in the form of either prohibitions or permissions. Issued as prohibitions, they are orders not to take specific actions. Issued as permissions they are guidance to commanders that certain specific actions may be taken if they are judged necessary to achieve the aim of the mission.

COMMANDERS' RESPONSIBILITY

- 6. Commanders at all levels are required:
  - a. to have this directive translated and disseminated to every subordinate under their command; and
  - b. to ensure that every subordinate under their command understands the contents of this document.

UN RESTRICTED

AUTHORIZATION LEVELS FOR THE USE OF FORCE

7. The use of deadly force for the different types of weapons will be authorized as follows:

a. Force Commander or His Delegate:

- (1) heavy support weapons (ie. rocket launchers, artillery pieces, light mortars, etc.);
- (2) heavy machine guns or cannons ( .50 cal, 20mm, etc.); and
- (3) medium machine guns (ie. FN MAG, M60, etc.).

b. Sector Commanders:

- (1) light machine guns; and
- (2) all personal weapons automatic fire.

c. Battalion Commander Down to NCO Level at the Scene of a Threat. Personal weapons for single shot fire.

PRINCIPLES FOR USE OF FORCE

8. When an incident occurs that requires the use of force, the following principles will be adhered to:

- a. if possible, negotiation and warnings must be exhausted before any use of force is initiated;
- b. only the minimum non-deadly and deadly force consistent with achieving the immediate aim shall be employed;
- c. except where authorized under paragraph 11, the escalation of force procedures pursuant to paragraph 16 must be exhausted before the use of any deadly force is initiated;
- d. deadly force is justified only under conditions of extreme necessity and as a last resort when all lesser means have failed or cannot reasonably be employed;
- e. escalation of the level of violence is to be minimized;
- f. collateral damage is to be minimized;

UN RESTRICTED

- g. the use of force in retaliation is prohibited; and
- h. use of force shall be controlled by the on-scene commander and is to cease once the aim has been achieved.

AUTHORITY TO USE FORCE

9. Force may be used as follows:

a. Non-Deadly Force. UNAMIR personnel are authorized to use non-deadly force in the following circumstances:

- (1) in self-defence ( as defined in paragraph 4.b.) against unarmed aggression;
- (2) against unarmed attempts at infiltration or envelopment of UNAMIR units, compounds or locales;
- (3) when UNAMIR premises are violated in unarmed attempts to steal UNAMIR property or property under the protection of the UN;
- (4) when unarmed attempts are made to abduct or detain UNAMIR civilian or military personnel; and
- (5) when unarmed attempts are made to prevent UNAMIR personnel from carrying out their responsibilities as ordered by their commanders.

b. Deadly Force. UNAMIR personnel are authorized to use deadly force in the following circumstances:

- (1) in self- defence ( as defined in paragraph 4.b.) against persons committing a hostile act or exhibiting hostile intent;
- (2) to protect from damage or destruction, property or installations belonging to or under the protection of UNAMIR, including protected sites and the means for the distribution and delivery of humanitarian relief:
  - (a) which have been designated by the unit Commanding Officer, in consultation with the Force Commander, as essential to the success of the UNAMIR mission,
  - (b) which justify protection through the use of deadly force, and ,



UN RESTRICTED

- (c) where there is no way to prevent the damage or destruction;
- (3) to overcome armed attempts to prevent UNAMIR Forces discharging its duties, when authorized by the Force Commander;
- (4) to resist armed attempts to disarm, abduct or detain UNAMIR military or civilian personnel;
- (5) to resist armed attempts to compel UNAMIR personnel to withdraw from protection areas they were ordered to occupy by the Force Commander or his delegate; and
- (6) to resist armed attempts to cut off a UNAMIR force.

AUTHORITY TO SEARCH AND DETAIN

10. Authority to stop and Search. UNAMIR personnel are authorized to stop all individuals attempting to enter or who are discovered inside any facilities under UNAMIR protection and to request that the individual submit to a consensual search of himself / herself and his/her vehicle where applicable. Any individual not willing to be searched shall be denied access, escorted from the premises or detained as appropriate. Searches of persons and their property are also authorized for the purpose of security. Such searches may be conducted with the minimal use of force necessary.

11. Authority to Detain. Individuals shall only be detained if they commit a hostile act, display hostile intent or carry out any activity which would require that force be used against them under paragraph 9.

12. Once detained, only minimal non-deadly force is authorized to prevent the escape of a detainee, unless there is a necessity to act in self-defence, in which case minimum force, up to and including deadly force, is authorized. However, if the individuals flee and the threat of their use of force has thus been removed, further force of any kind shall not be employed to apprehend them.

13. Any individual detained shall be turned over as soon as possible to appropriate police authorities as designated by the Force Commander. Any weapons seized from detainees shall be confiscated or rendered militarily ineffective.

14. Treatment of Detainees. Any individuals detained are not Prisoners of War (PW) under the 1949 Geneva Convention. However, all persons detained will be accorded, as a minimum standard, treatment which would be given to a PW. In almost every case, except where extreme operational exigencies demand, a higher standard will be observed. Since the detention should only be for a minimum period of time, many of the procedures under the Geneva Convention accorded to PWs will be inapplicable.

Note: Detainees shall not be subject to intimidation, deprivation or humiliation. Medical care and the attention of medical personnel will be provided when required. Detainees will be given rations and shelter equivalent to that of UNAMIR personnel.

#### CHALLENGE AND ESCALATION PROCEDURES

15. Except where a response is required in accordance with paragraph 16, the following procedures are to be followed:

a. Verbal or Visual Warning. Warn the aggressor to stop the activity, which in normal circumstances, should follow the following sequence:

(1) depending on the circumstances, a warning may be given orally, by a sign or by illumination (ie, hand-held red flares, search-lights, etc.). The issuance of a warning should also be passed up the chain of command with continuous Situation Reports;

(2) repeat the verbal or visual warning as many times as is necessary to ensure understanding or compliance;

b. Charge Weapons. If authorized under State B of ROE No.2 (paragraph 16 refers);

c. Warning Shots. If the threat continues, employ aimed warning shots in a safe direction so that there is no danger of personal injury or collateral damage;

d. Non-Deadly Force. If warning shots are ignored, employ minimal non-deadly force;

e. Deadly Force. If minimal non-deadly force is either not feasible or fails, on order and under the control of a superior, minimal deadly force, such as single aimed shots, may be used until the threat is removed;

- f. Escalation of Deadly Force. Escalatory weapons fire with other weapons systems shall only be on the order of the appropriate commander in accordance with paragraph 7.

OPENING FIRE WITHOUT WARNING OR ESCALATION

16. The only circumstance under which it is permissible to use deadly force without warning or escalation is if an armed attack by an aggressor comes so unexpectedly that even a moments delay could:

- a. lead to death or serious injury to UNAMIR personnel or to other UN-authorized military or civilian personnel;
- b. lead to death or serious injury to persons who are under the protection of UNAMIR; or
- c. lead to the immediate damage or destruction of UNAMIR property in the circumstances described in paragraph 9.b.(2).

PROCEDURE DURING FIRING

17. Any use of firearms as a means of applying deadly force, shall be aimed fire, ie, fired at the centre of the visible mass of the target. Fire must be controlled and will not be indiscriminate. Automatic fire and firing of support weapons will only be used as a last resort and only as authorized under paragraph 7. Fire for effect will only continue as long as it is necessary to achieve the immediate aim.

Through fire control orders, the commander on the scene will indicate and control the fire, preferably directed at the leaders or instigators of the threat. Regular situation report will be forwarded through the chain of command.

18. Whenever possible, each escalation in the use of force should be authorized by the chain of command of UNAMIR. A request in clear by radio for authorization to fire can have a calming effect on its own. Permission to use higher level of force must be obtained from the appropriate commander in accordance with paragraph 7. The on-scene commander is responsible for assessing the situation and taking action appropriate to the situation.

PROCEDURE AFTER FIRING

19. After firing, commanders should ensure the following actions are taking.

UN RESTRICTED

a. Medical. Any wounded, including those fired upon by UNAMIR personnel will be given first aid, if such an action can be done without further endangering the lives of UNAMIR personnel.

b. Recording. Details of the incident will be recorded, including:

- (1) date, time and place of firing;
- (2) unit and personnel involved;
- (3) the events leading up to the firing;
- (4) why UNAMIR personnel opened fire;
- (5) who or what was fired on;
- (6) the weapons fired; and
- (7) the apparent results of the firing.

c. Reporting. The above information and the current situation will be reported through the chain of command to Force HQ ATTN Force Commander and Chief Operations Officer.

PART 1V

RULES OF ENGAGEMENT

20. Rule No. one: Authority to Carry Arms

- a. State A: No authority; and
- b. State B: Authority granted to carry weapons.

21. Rule No. Two: Status of Weapons

- a. State A: Weapons will be carried with loaded magazines.
- b. State B: Weapons will be carried, charged and made safe.

22. Rule No. Three: Response to Hostile Intent or Hostile Act without the Use of Fire

- a. State A: Observe and report but will withdraw in order to preserve own force.

UN RESTRICTED

- b. State B: Stay in place. Make contact and establish liaison with opposing force(s) and/or local authorities concerned.
  - c. State C: Observe and Report. Stay in place. Warn aggressor of intent to use force and demonstrate resolve by appropriate means without opening fire.
  - d. State D: Observe and Report. Stay in place. Warn aggressor of intent to use force and demonstrate resolve by appropriate means. Demonstrative use of fire is authorized.
23. Rule No. Four: Disarmament of Paramilitary Personnel or Civilians
- a. State A: No authorization granted.
  - b. State B: Authorization is granted. In doing so, use minimum force and escalate to include use of deadly force if hostile intent is exhibited or a hostile act is committed. Hand over to appropriate authority at the earliest opportunity.
24. Rule No. Five: Intervention and Warning Shots
- a. State A: Intervention is prohibited.
  - b. State B: Intervention with deadly force against positively identified and designated targets only after warning shots have been fired as part of the warning process.
25. Rule No. Six: Control of Weapons Systems
- a. State A: Manning, preparation, movement and firing of weapons in the presence of the forces in conflict is prohibited.
  - b. State B: Designated activity in the presence of the forces in conflict is permitted but will be specified by the following notes:
    - (1) Man (type of system);
    - (2) Prepare (type of system);
    - (3) Move (type of system); and
    - (4) Fire (type of system).

UN RESTRICTED

26. Normal Rules and States. In normal, daily situation the following ROE status shall apply:

- a. Rule No. One, State B (Authority granted to carry weapons.);
- b. Rule No. Two, State A (Weapons will be carried with loaded magazines.);
- c. Rule No. Three, State B (Stay in place. Make contact and establish liaison with opposing force(s) and/or local authorities concerned.);
- d. Rule No. Four, State A (No authorization granted.);
- e. Rule No. Five, State A (Intervention is prohibited.); and
- f. Rule No. Six, State A (Manning, preparation, movement and firing of weapons in the presence of the forces in conflict is prohibited).

Note: Changes in normal status of the ROE for UNAMIR Forces as a whole, as directed in this paragraph, will be ordered by the Force Commander or his delegate. Sector Commanders may order changes in normal status of the ROE for their sectors, if authorized by the Force Commander or his delegate.

PART V

CONCLUSION

27. The aim of this directive is to provide guidance to commanders and soldiers at all levels in the use of force. However, no definitive directive can be created that can detail every possible course of action for every possible situation. It is critical and mandatory that all members of UNAMIR understand these ROE and apply them to any and all situations that develop requiring the use of force.

28. Amendments to this directive will be issued as required and as approved by the UN.

29. This directive will be classified UN RESTRICTED.

Annex:

Annex A Aide-Memoire for Members of UNAMIR.

UNAMIR RESTRICTED

ANNEX A TO  
AIDE MEMOIRE  
DATED 22 JUL 94

**INSTRUCTIONS FOR ALL MEMBERS OF  
THE UNAMIR MILITARY COMPONENT  
REGARDING OPENING FIRE IN RWANDA**

1. You are to avoid the use of force, if it is possible to do so, and your conduct must cause the least possible concern, fear or danger to the local population.
2. Your immediate commander will order any change in the states of weapon readiness. While your commander will normally issue the order to open fire, you have the right to use appropriate force in self-defence to protect yourself and those it is your duty to protect. Whenever possible a warning should be given before opening fire (see over).
3. If you have to use force, you must only use the **MINIMUM FORCE** necessary. **MINIMUM FORCE** normally involves the following sequential actions:
  - a. open display of weapons.
  - b. verbal warning.
  - c. barring access to the point being protected.
  - d. physical restraint.
  - e. warning shots.
  - f. pointing weapons, and
  - g. firing weapons.

**WARNINGS**

4. **WARNING BEFORE FIRING.** Whenever possible a warning should be given before firing. The warning should be given in a loud clear voice in ENGLISH/FRENCH or KINYARWANDA:

STOP-HANDS UP/ ARRETEZ LEVEZ LES MAINS/  
HAGARARA, AMABOKO HEJURU

(PAUSE)

STOP OR I WILL SHOOT/ ARRETEZ OU JE TIRE/  
HAGARARA, CYANGWA BAKURASE

5. **FIRE AFTER WARNING.** After warning you may fire on a person in order to avoid death or grievous bodily harm only if:

- a. the person is carrying a dangerous weapon (e.g. firearm, improvised firing device or machete); AND
- b. you believe the person is about to attack you, your unit, or any person it is your duty to protect; AND
- c. the person refuses to stop when called upon to do so; AND
- d. you believe there is no other way of stopping the person.

6. **FIRE WITHOUT WARNING.** You may fire without warning on a person in order to avoid death or grievous bodily harm only if that person:

- a. has used or is using a fire arm or other dangerous weapon against you, your unit or persons it is your duty to protect; OR
- b. is carrying what you believe to be a dangerous weapon, AND is clearly about to use it, AND you believe that there is no other way to protect yourself, your unit, or the persons it is your duty to protect.

7. If you have to fire, you must account for all rounds expended in an after action report submitted in writing to your immediate commander.



UNAMIR LEVELS OF READINESS/ALERT

SL	STATUS	UNITS/HQ	ACTION
1	GREEN	ALL	1. Normal activities 2. <b>ROE: Rule 1-Status B,Rule 2-Status A, Rule 3-Status B, Rule 4-Status A, Rule 5-Status A, Rule 6-Status A.</b>
2	YELLOW	HQ	1. Planning for next higher status commences.
		UNITS	2. Liaison increased. 3. VIP visits postponed. 4. No leave granted except on compassionate grounds
		ALL	1. Precautionary Stage. 2. Double sentries. 3. Night movement restricted. 4. Test shelters. 5. Stand To/Local Alarm practice. 6. No leave granted except on compassionate grounds. 7. Back up comms/units/wpns. 8. Reserves put on 3 hrs notice to move. <b>ROE: Rule 1-Status B, Rule 2-Status B, Rule 3-Status C, Rule 4-Status A, Rule 5-Status A, Rule 6-Status A.</b>

3	RED	HQ	1. General Alert. 2. VIP visits cancelled. 3. No leave granted. 4. Emergency movements only. 5. Special Sitreps to UNHQ. 6. Civilian evacuation if the situation warrants.
		UNITS	1. Troops in defensive positions. 2. Troops in Stand To positions. 3. Reserves put on one hour notice to move. 4. No leave granted. 5. Troops on duty outside to wear flak jackets.
		ALL	<b>ROE: Rule 1-Status B, Rule 2-Status B, Rule 3-Status D, Rule 4-Status B, Rule 5-Status B, Rule 6-Status B.</b>

**SCENARIO DRIVEN LEVELS OF READINESS/ROE**

SCENARIO	DESCRIPTION	STATUS
1	Sentries - UNAMIR Installations	Red
2	Normal Movement Between Business locations	Green
3	Routine Patrols	Yellow
4	Escorted Convoys (NGO's, VIP's etc.)	Red
5	Hostile Barriers	Red
6	Extraction	Red
7	Deployment of Reserves	Red
8	Protection of UNAMIR Installations	Red
9	Individuals under UNAMIR protection	Red
10	Observation Posts	Red
11	UN Controlled Checkpoints	Red

## **AIDE MEMOIRE - RULES OF ENGAGEMENT**

### **RULE ONE: AUTHORITY TO CARRY ARMS**

STATE A: No authority granted.

STATE B: Authority granted to carry weapons.

### **RULE TWO: STATUS OF WEAPONS**

STATE A: Weapons will be carried with loaded magazines.

STATE B: Weapons will be carried, charged and made safe.

### **RULE THREE: RESPONSE TO HOSTILE INTENT OR HOSTILE ACT WITHOUT THE USE OF FIRE**

STATE A: Observe and report but will withdraw in order to preserve own forces.

STATE B: Stay in place. Make contact and establish liaison with opposing force(s) and/or local authorities concerned.

STATE C: Observe and report. Stay in place. Warn aggressor of intent to use force and demonstrate resolve by appropriate means without opening fire.

STATE D: Observe and report. Stay in place. Warn aggressor of intent to use force and demonstrate resolve by appropriate means. Demonstrative use of fire is authorized.

### **RULE FOUR: DISARMAMENT OF PARAMILITARY PERSONNEL OR CIVILIANS**

STATE A: No authorization granted.

STATE B: Authorization is granted. In doing so, use minimum force and escalate to include use of deadly force if hostile intent is exhibited or a hostile act is committed. Hand over to appropriate authority at the earliest opportunity.

### **RULE FIVE: INTERVENTION AND WARNING SHOTS**

STATE A: Intervention is prohibited.

STATE B: Intervention with deadly force against positively identified and designated targets only after warning shots have been fired as part of the warning process.

## **RULE SIX: CONTROL OF WEAPONS SYSTEMS**

STATE A: Manning, preparation, movement and firing of weapons in the presence of the forces in conflict is prohibited.

STATE B: Designated activity in the presence of the forces in conflicts permitted but will be specified by the following notes:

- (1) Man (type of system)
- (2) Prepare (type of system)
- (3) Move (type of system)
- (4) Fire (type of system)